



# Alternative Transportation User Fees Foundation Partnership

---

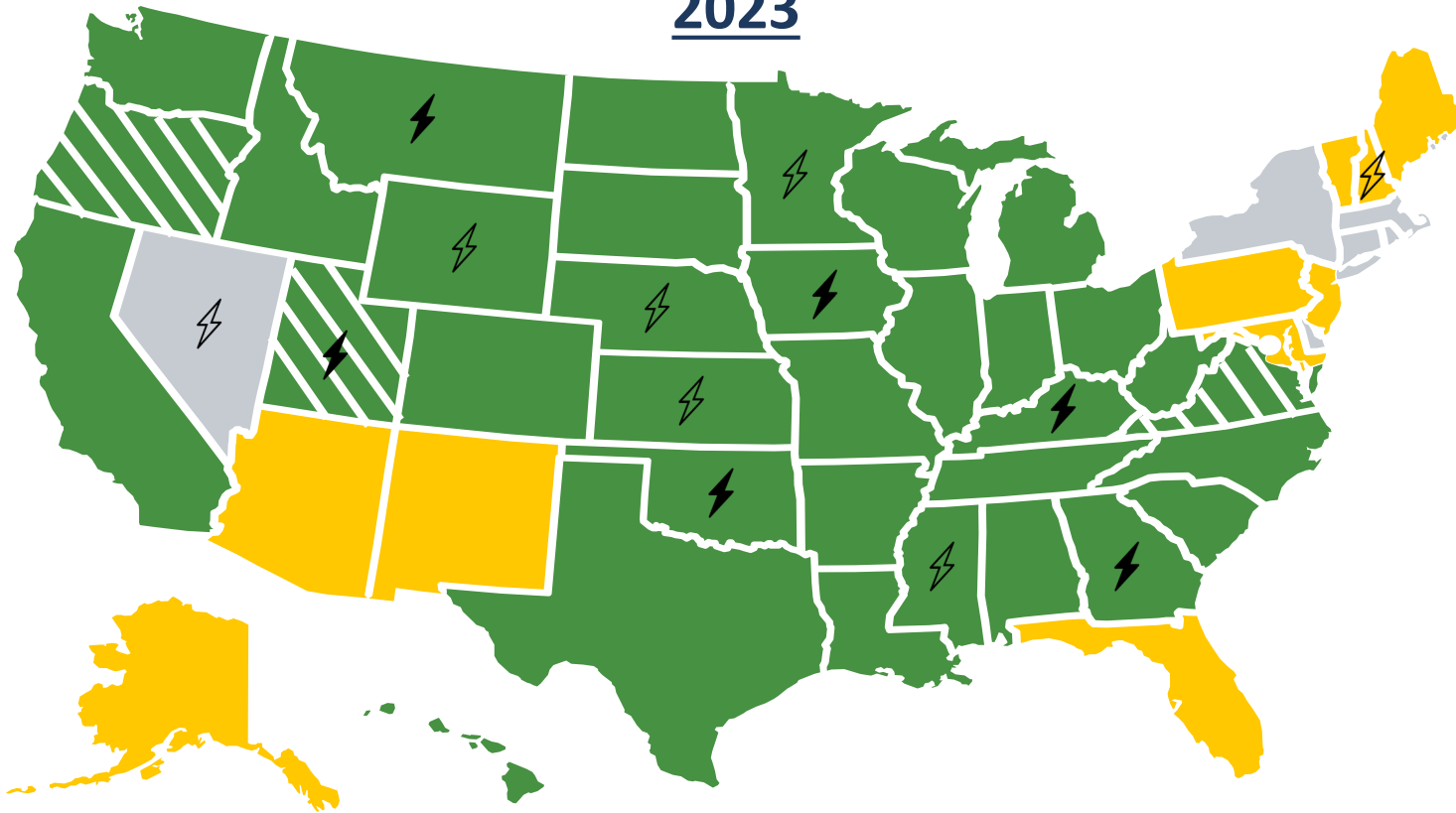
Nathan D. Lee, PE

Director, Technology & Innovation NCSL -Dec 2023



# Alternative Fuel Vehicle Annual Fees & EV Charging Taxes

**2023**



- Considered annual fees (10 states)
- Annual fees enacted (34 states)
- ▨ Per-mile RUC/MBUF enacted (4 states)
- ⚡ EV charging tax enacted (6 states)
- ⚡ Considered EV charging tax (7 states)

## Per-mile RUC

Leg. Enacted

US RANGE	US AVG	UTAH
0.06¢–\$1.90¢	0.99¢	1.00¢

## Annual Fees

EVs

US RANGE	US AVG	UTAH
\$50–\$225	\$135	\$130.25
\$15–\$200	\$73	\$56.50
\$15–\$120	\$66	\$21.75

PHEVs

Gas Hybrids

## EV Charging Taxes (per kWh)

Leg. Enacted

Leg. Introduced

US RANGE	US AVG	UTAH*
\$0.026–\$0.038	\$0.030	\$0.038
\$0.030–\$0.150	\$0.066	N/A

\*Utah's tax is 12.5% of the retail cost; value assumes retail cost = \$0.30/kWh



# RUC / Reg Fees / kWh - Implementing Agency Structures



Dept of Transportation



Dept of Motor Vehicles



Tax Commission / Dept of Finance

RUC/MBUF/VMT = DOT

Annual Fees = DMV

kWh Tax = TC

# DMV Location within State Government



Tax Commission / Dept of Finance  
Utah and Hawaii



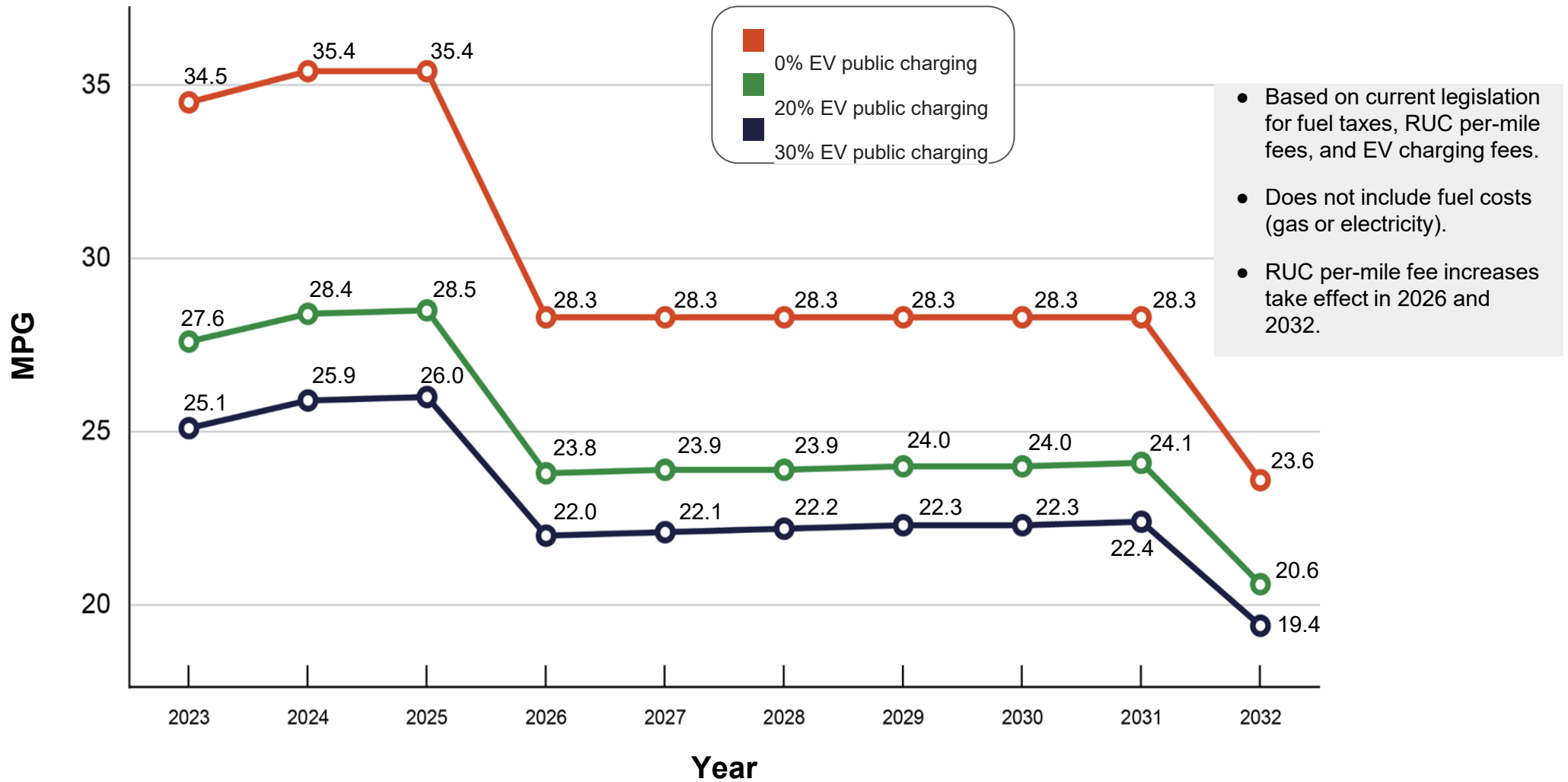
Dept of Transportation  
Oregon and Virginia



Dept of Public Safety  
Minnesota, Ohio, and Oklahoma

DATA UPDATED THRU APR 2023

# ICE / EV MPG Equivalents (UT Taxes/Fees Only)



# Industry Insights from RUC CAM Procurement

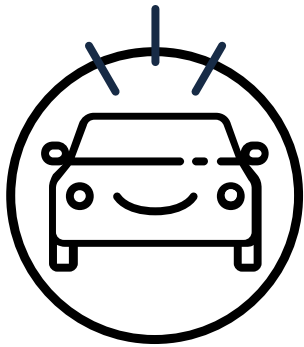
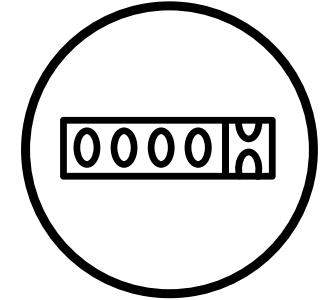


## Innovative Solutions to Reduce Cost

- Quarterly reporting instead of monthly
- Additional telematics options
- No plug-in devices
- Digital Odometer reporting option
- Only mileage reported, no tracking

## Digital Devices

- OBD-II not cost effective
- Numerous vendors support odometer photo (app or text)



## Telematics Data Collection Models

- Collaboration with automakers (CerebrumX)
- API without automaker collaboration (Smartcar)
- Tesla
- GeoToll