



VERRA
MOBILITY™

Building Safer & More Accessible Cities with Turnkey Camera Programs

- Enhance Urban Mobility
- Change Driver Behavior
- Reduce Crashes & Save Lives

ZERO➤
IN ON SAFETY

Join us in our mission to
make our roads safer for all.



What We Strive For

ZERO
IN ON SAFETY



SAFER ROADS FOR ALL

Imagine a world where you can safely navigate your community without fearing a car crash.

We believe transportation should be accessible, efficient, and safe for all users. That's why we persistently implement smart transportation solutions that enhance urban mobility, change driver behavior, reduce crashes, and save lives.



Safety & Mobility Solutions

By zeroing in on safety, we are working towards a world where everyone can travel safely.

- **Speed Enforcement**
- **Red-Light Enforcement**
- **Bus Lane Enforcement**
- **School Bus Safety Solutions**
- **ALPR (Automated License Plate Recognition)**

10K+ SYSTEMS



**SPEED
SAFETY**



**RED-LIGHT
SAFETY**



**SCHOOL
SAFETY**



**BUS LANE
MOBILITY**



LEADING TECHNOLOGY

Who We Serve

Cities, Counties & Transportation Authorities

- **Safety Enforcement:** Red-light & speed safety camera programs
- **Smart Mobility:** Bus lane & lane management programs
- **Video Intelligence:** Live & recorded high-definition video
- **Analytics & Insight:** Roadside sensor traffic data & ALPR programs

Law Enforcement

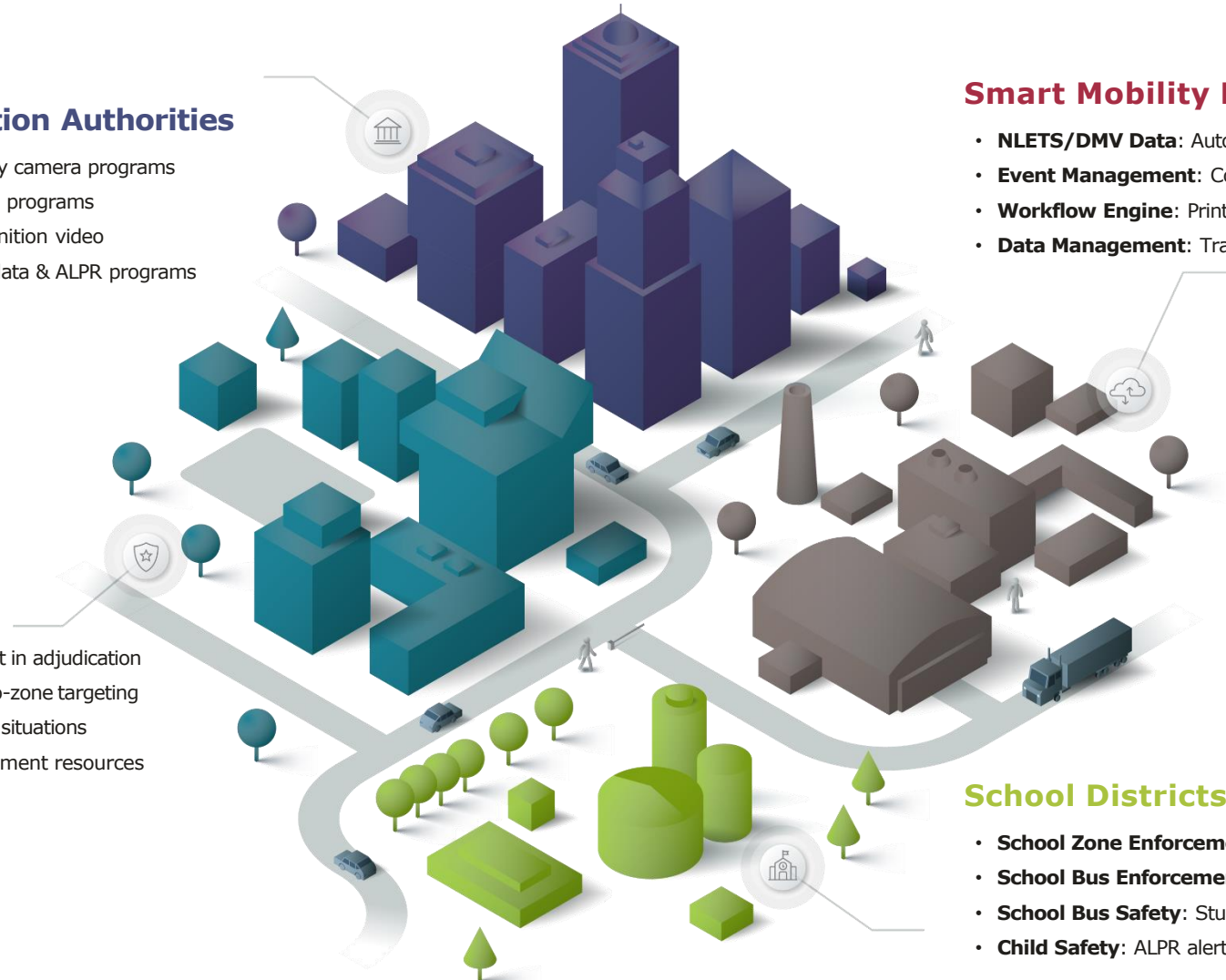
- **Evidence Packages:** Data, images & video to assist in adjudication
- **ALPR Alerts:** Custom hot lists, mapping tools & geo-zone targeting
- **No Traffic Stops:** Remove officers from dangerous situations
- **Automated Enforcement:** Efficient use of Department resources

Smart Mobility Platform Partners

- **NLETS/DMV Data:** Automated plate & registered owner lookup
- **Event Management:** Configurable event review, validation & processing
- **Workflow Engine:** Print, mail, payment & court support on customers' behalf
- **Data Management:** Traffic, violation, payment, uptime & trend reporting

School Districts

- **School Zone Enforcement:** Speed safety camera programs
- **School Bus Enforcement:** Stop-arm safety camera programs
- **School Bus Safety:** Student ridership with an app for parents
- **Child Safety:** ALPR alerts in school zones: Amber, BOLO, etc.



National Statistics Sound the Alarm



MOTOR VEHICLE FATALITIES
and serious injuries in the United States reached a 16-year high in the year 2021.¹



FATALITIES INCREASED
from '2021-'2022 among cyclists (8%), motorcyclists (5%), and pedestrians (2%).¹



THE TYPICAL U.S. DRIVER
lost 51 hours to congestion in 2022, about an hour each week, costing, on average, \$869 in lost time.²



TRAFFIC CRASHES COST
American society \$340 billion in 2019. \$1,035 for each of the 328 million people in the U.S.¹

Cities Turn to Safety & Mobility Solutions



CHANGE DRIVER BEHAVIOR

Reduce crashes, injuries, and fatalities on the road by enforcing traffic compliance.



INCREASE EFFICIENCY

Reduce the workload burden on law enforcement officers to cover more ground with less effort.



BOOST MOBILITY

Reduce traffic congestion and improve traffic flow on busy roads and intersections.



ENHANCE SAFETY

Reduce dangerous driving, making city streets safer for drivers, pedestrians, and cyclists.

How and Why does it work?



PROCESSING

Event Capture
Back- office Review
Law Enforcement Issuance

- > Equipment
- > **Installation**
- > Maintenance
- > Management
- > Training
- > **Event Processing**
- > Citation Printing
- > Citation Mailing
- > Reporting
- > **Public Awareness**
- > Payment Support
- > Court Support

Myths Versus Facts | Automated Enforcement

MYTHS

It is too expensive for cities to implement.

It is unfair

It is unreliable

It is not popular with the public

VS

FACTS

Most programs are designed to be violator-funded - not taxpayer-funded

It eliminates bias and human error

Are highly accurate and are regularly tested and calibrated

The majority of the public supports the use of automated enforcement to improve safety on the roads

Best Practices for Successful Programs



Community Buy In & Transparency

- Reporting requirements
- Assess violation and crash data / publish speed studies
- Signage
- Notice/warning period for the community



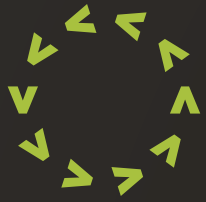
Transfer of Liability

- Vehicle owner as the responsible party
- Plates not people



Safety Focus

- Reasonable fine structure
- Speed threshold
- Clear procedures for contesting an alleged violation
- Subscription Service vs. Revenue Share



**VERRA
MOBILITY™**

Thank you.

- **Enhance Urban Mobility**
- **Change Driver Behavior**
- **Reduce Crashes & Save Lives**

ZERO
IN ON SAFETY

Join us in our mission to
make our roads safer for all.

