

Solving a \$345B Healthcare Problem*



Reactive Medicine Today



Precision Medicine

PROBLEM

Low value care

- Reactive, Trials & errors system
- No symptom, no treatment
- Slow & expensive
- Not personnalized
- Patient travels to cares

SOLUTION

High value care

- Preventative Healthcare
- Proactive Healthcare
- Personalized Healthcare
- Participatory Healthcare
- Cares come to patient

*Source: [A 'more, more, more' approach to cancer screening is misleading and harmful](#)
*Source: [Waste in the US Health Care System Estimated Costs and Potential for Savings](#)

Digital Twins used for 60 years

NEXT

Metaverse

1960s

NASA Lunar Simulations

1980s

Automotive Vehicle Design

2002

Manufacturing Digital Twins

2017

Gartner's Top Trend

1970s

Oil & Gas Reserve Exploration

1991

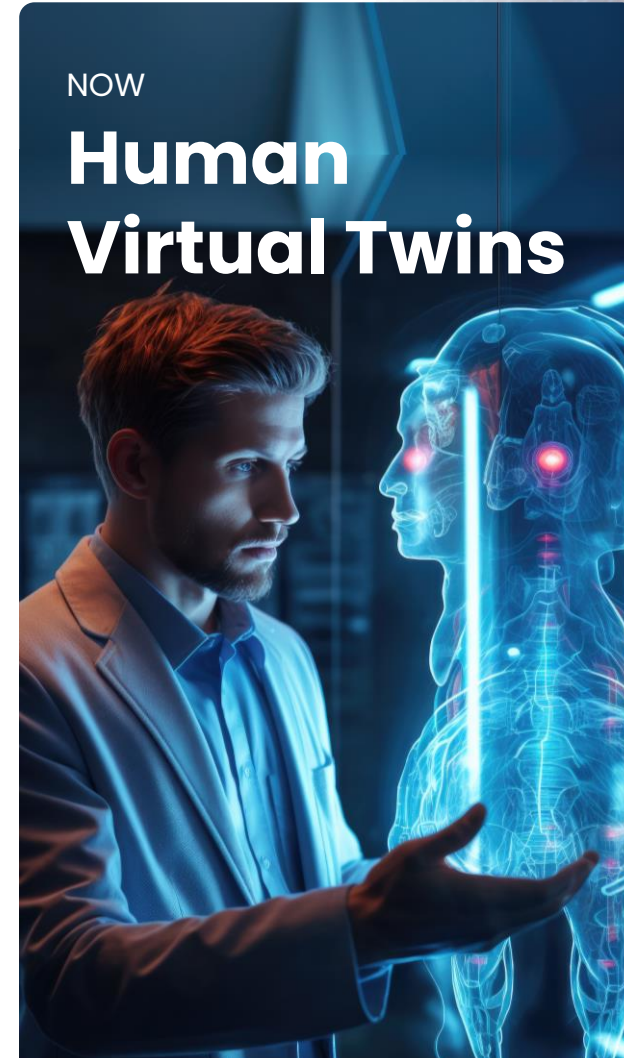
"Mirror Worlds"

2010

NASA Spacecraft Simulation

2020

Digital Twin Consortium formed



NOW

Human Virtual Twins



Digital Twin technology

Improving decisions since the 1960

- Prevention
- Early Detection
- Remote Monitoring
- Historical / longitudinal data
- Prediction & Forecasting
- Prognostic
- Simulation & Virtual testing
- Treatment assistances
- Risk assessment and mitigation
- Performance & healthspan optimization

Virtual Human Twin



Clinical Decision Support Tool

+10K
health conditions

Lifestyle medicine

Parkinson

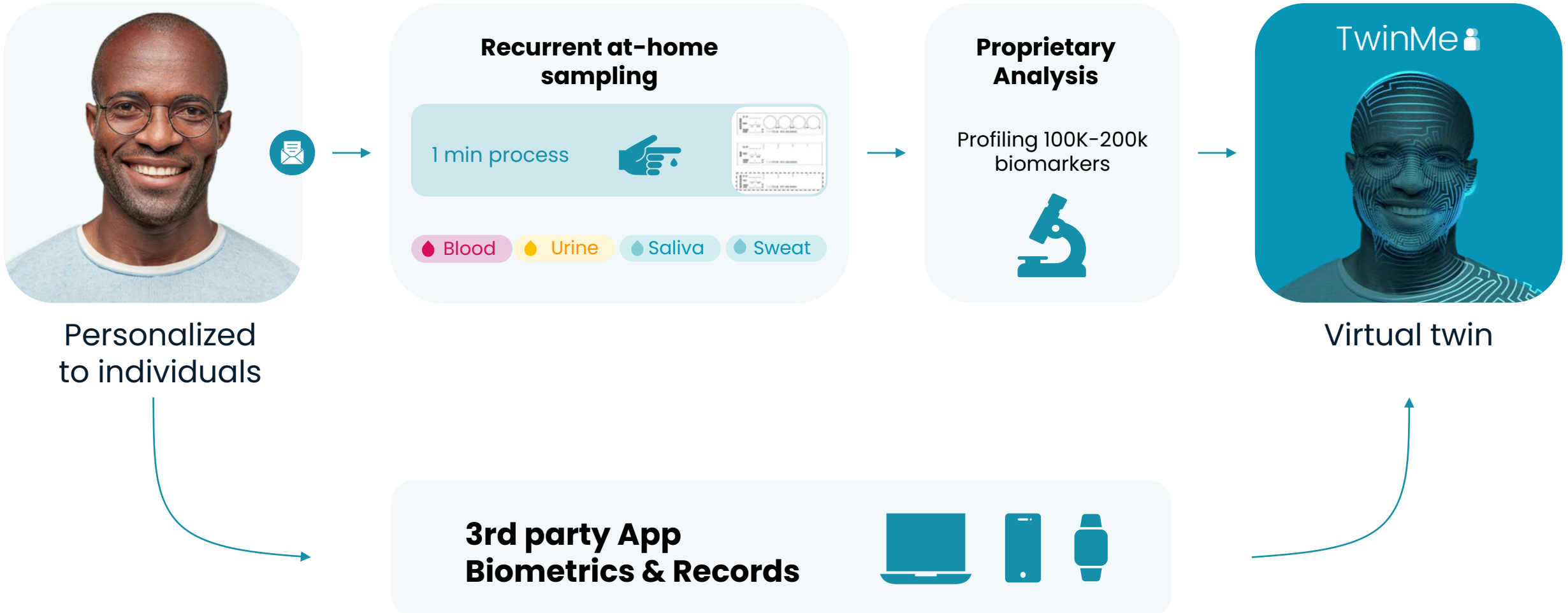
Oncology

Diabetes

Cardiology

+ Others

Virtually replicating you

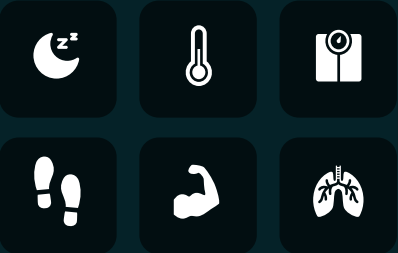


Science behind your Twin

Multi-Metric

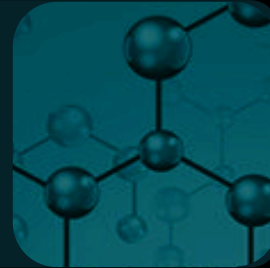
Biometric

Applications 

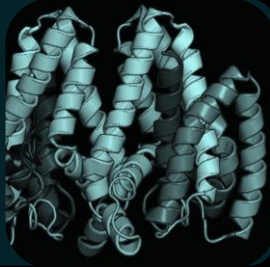


Biomarkers

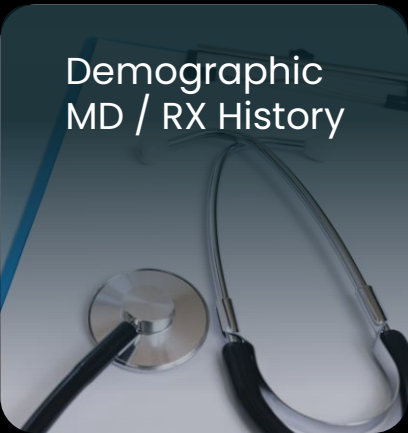
Metabolites



Proteins



Demographic
MD / RX History



Recurrent



DNA



Your own
personalized
Virtual twin

B2C

TwinMe

Virtual twin ecosystem

M

Freemium model: always free

- No min requirement or engagement
- No sharing or selling of user data

B2B2C

B2G2C

BIOTWIN

Healthcare marketplace

M

Rev share & SAAS model

- Client is the health professional
- Regulations managed by BioTwin

Leadership team



LP Noel
GM & Founder



Pierre-Jerome Legare
Director of Bus. Development



Kevin O'Brien



Genevieve Mercier
Laboratory director



Gabriel Lachance
Software director



Andy Sheldon



Scientific Advisors



Dr. Dajana Vuckovic



Dr. Richard Sherwood



Dr. Tao Huan



Caroline Rhéaume, MD



20+ Incredible teammates

With talent in

Artificial Intelligence

Analytical Chemistry

Bioinformatics

Commercial Strategy



BIOTWIN

**Raising a 50M
seed round**

**A Virtual Twin for you
Precision Medicine for all**

Louis-Philippe Noel

Founder & General Manager • Tech entrepreneur • 3rd time founder

lpnoel@biotwin.ai • +1-418-554-0554