

AI in Safety Net Facilities

Jennifer Stoll, Chief External Affairs Officer, OCHIN

November 7, 2025

UCHIN

25 Years of Impact

OCHIN doesn't just talk innovation—we deliver it—in resource constrained environments.
As a nonprofit, trusted partner, we deploy proven, shovel-ready solutions that connect care locally.
Deep clinical insight, regulatory fluency, and tailored technologies.

10.5M+

active patients across

300+

independent organizations with

40,000+

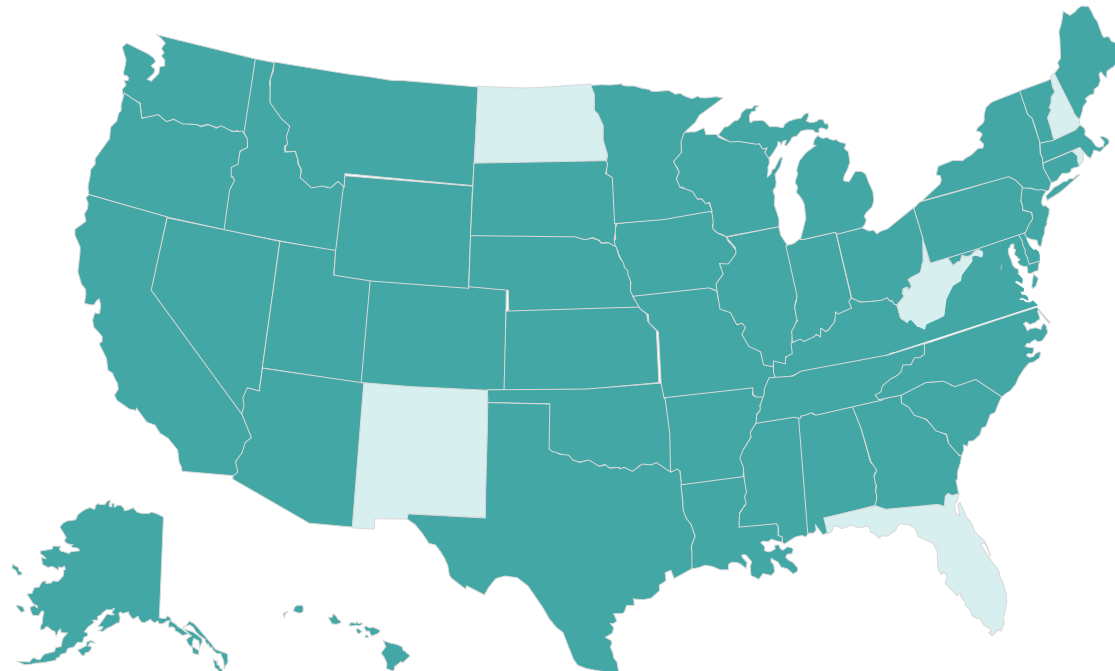
clinicians in

44

states with

173M+

clinical summaries securely
exchanged last year



Proudly serving



1/3 of the nation's FQHCs



Critical access hospitals



Rural health clinics



Community health centers



Indigenous and tribal health organizations



School-based clinics



Correctional facilities



Behavioral health providers



Dental clinics



Public health departments

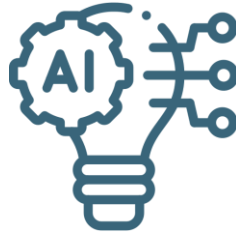


HIV/AIDS care organizations



PACE organizations

OCHIN Approach



Driving responsible AI adoption:

Tools are **tested and refined** using real-world data

Enhanced member AI readiness embedded into our operations

Leveraging the collaborative's research capabilities and role as nationwide convener to **build and spread real-world learnings and national standards**

OCHIN Learnings



As OCHIN continues to partner with members and third-party solutions, we have learned:

Quality data is essential

Change management to support staff

Continuously **monitor** AI solutions

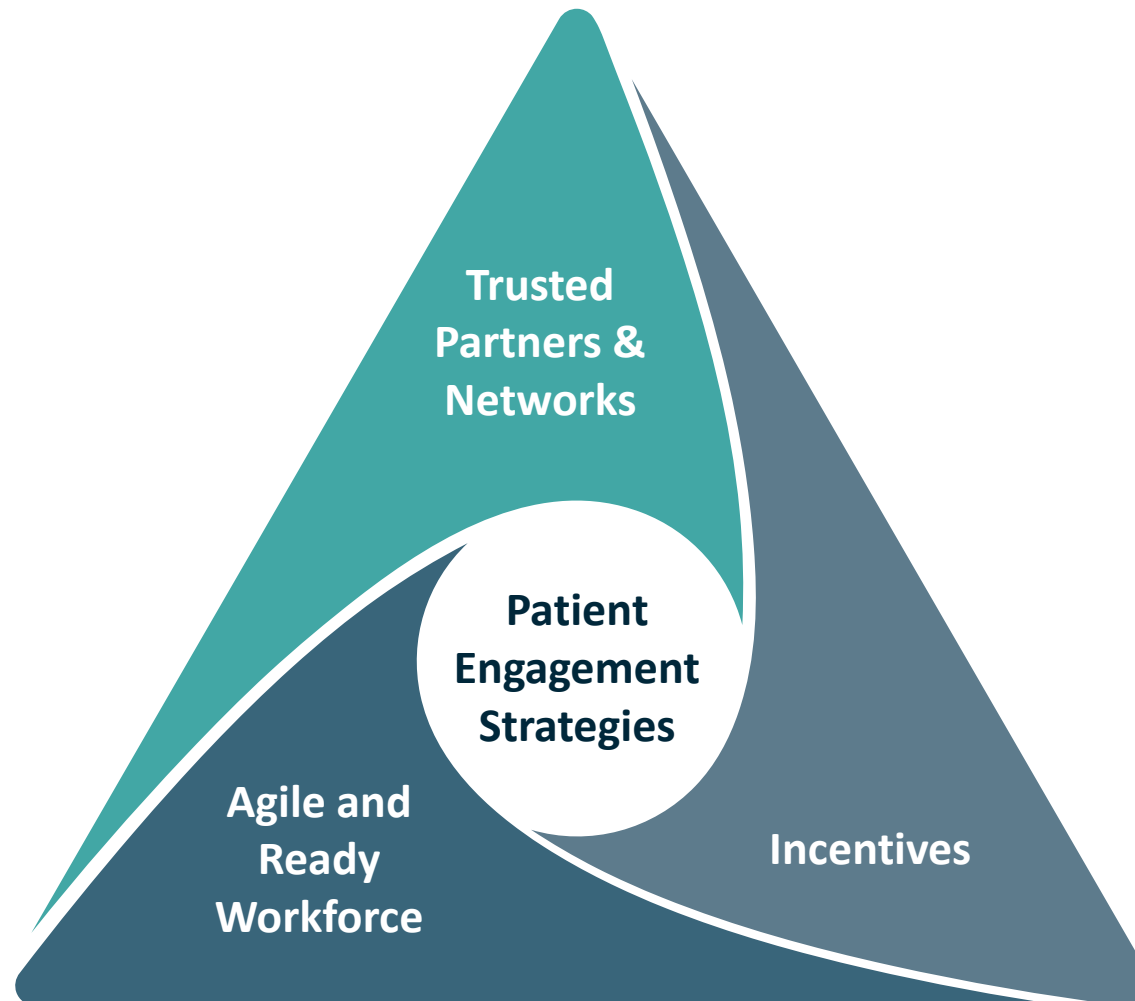
Start small

AI needs **human oversight**

Speed of change unprecedented

Responsible AI: Trusted, AI-Powered Health IT Ecosystem

Bridging the growing divide: next-generation AI tools that turn barriers into breakthroughs for FQHCs and rural providers



Trusted Partnership

- Local validation
- Technology innovation and deployment within locally controlled, modernized trusted health IT network
- Tools are tested and refined using real-world data

Incentives

- Mechanisms to support targeted incentives for FQHCs, RHCs, and CAHs among least resourced providers to drive adoption
- Data modernization and electronic health record adoption

Agile and Ready Workforce

- AI governance embedded into operations
- Workforce AI literacy and readiness
- Cultivating talent through intensive upskilling and professional development

THANK YOU

stollj@ochin.org

OCHIN

[OCHIN.org](https://ochin.org)

