



City Connects



Mary E. Walsh Center for
Thriving Children
BOSTON COLLEGE



What Is City Connects?

An evidence-based and school-based practice for school counselors and school social workers that integrates education with existing social services, youth development, health, and mental health resources.

What Does It Do?

01

Creates, for every student in a school, networks of support and opportunity

02

Drives the right resources to the right child at the right time, over time

03

Gets results, including reduced dropout rates



Our Core Practice

REVIEW OF EVERY STUDENT
WITH THEIR TEACHER



INDIVIDUAL
STUDENT REVIEW



PROPOSED
PLAN & TIER

FAMILIES



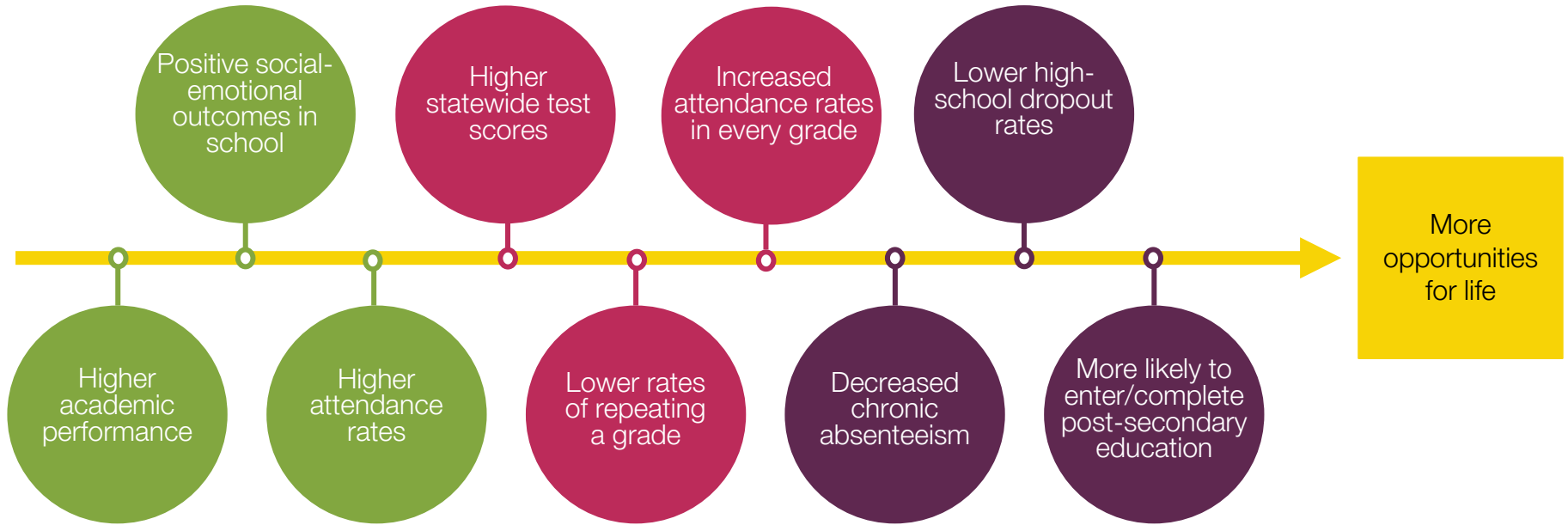
COMMUNITY
PARTNERS

TAILORED SUPPORT PLAN
FOR EVERY STUDENT



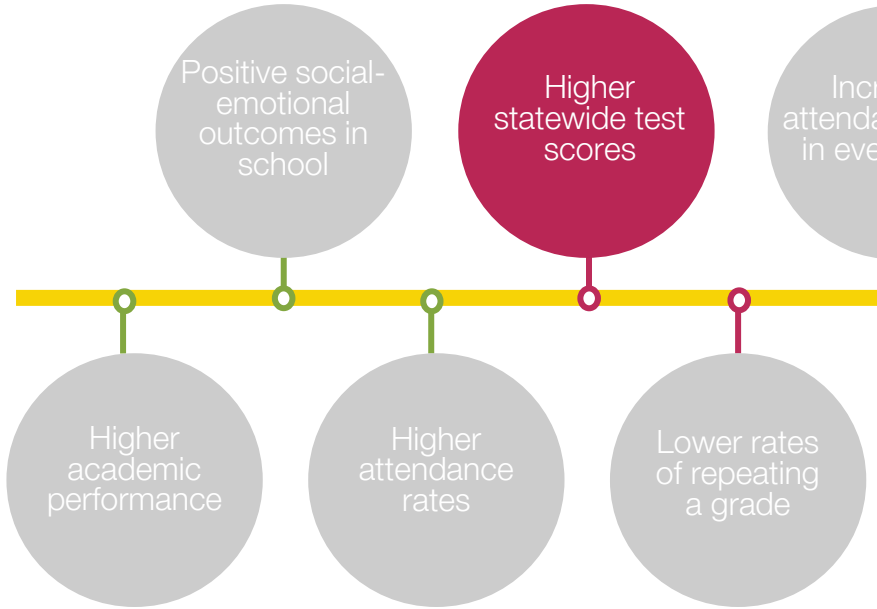
City Connects produces positive outcomes for students

Elementary School

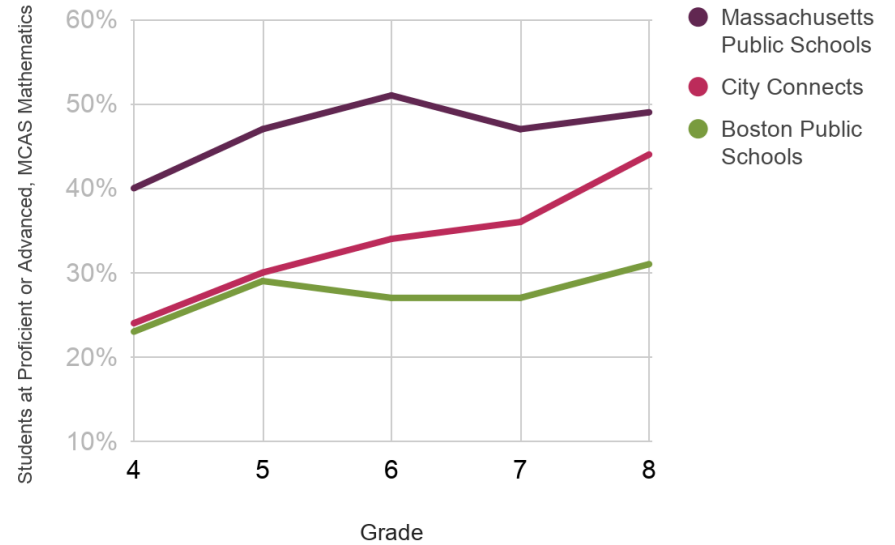


Long-term outcomes

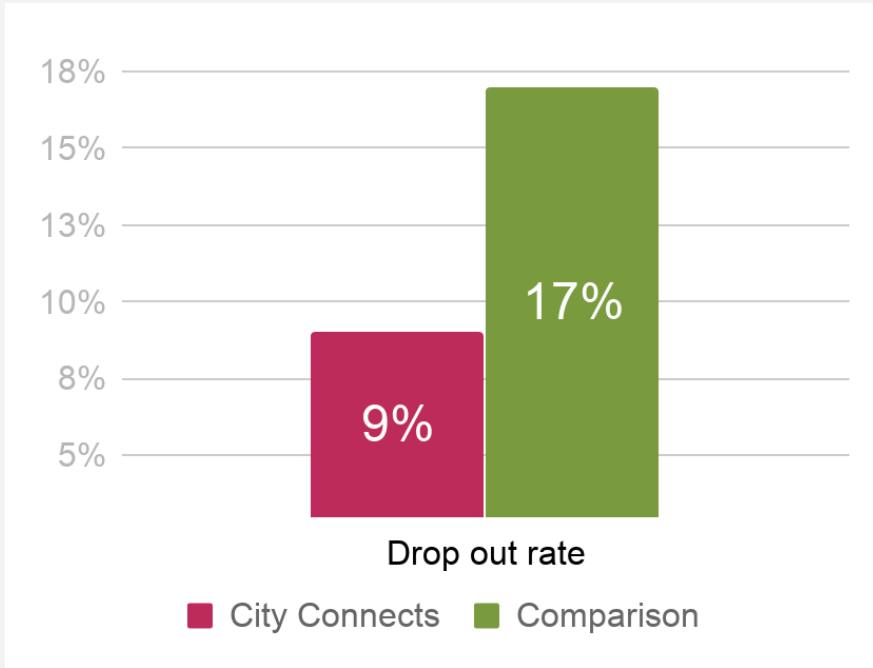
Elementary School



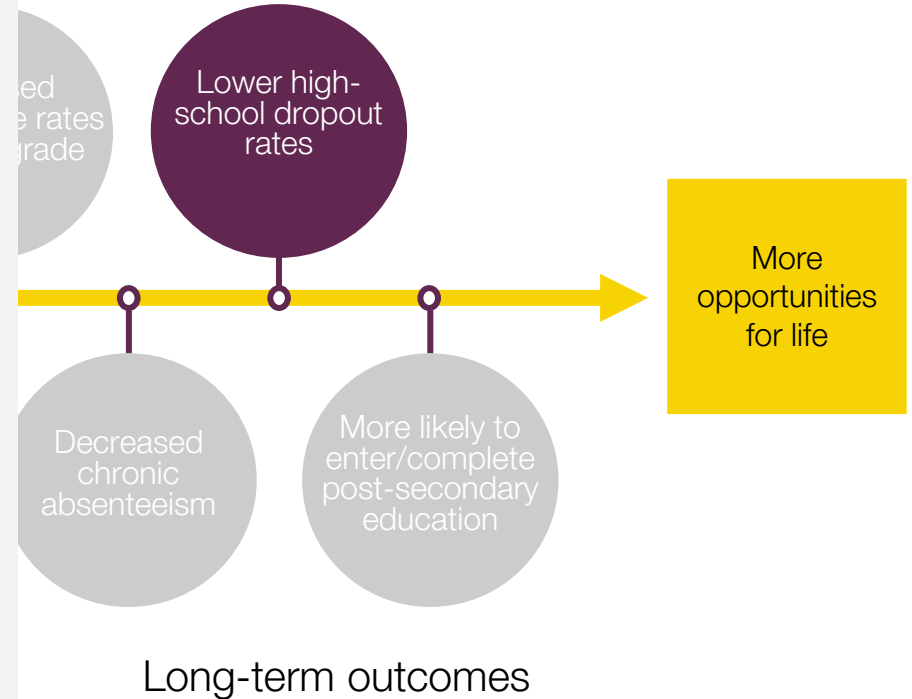
City Connects students achieve higher statewide test scores



City Connects students are less likely to dropout of high school



SOURCE: The Impact of City Connects: 2014 Progress Report



Positive Impacts on **Student Subgroups**

| First Generation, Immigrant, and English Language Learner Students | Black and Latino Students | Students Receiving Special Education Services |
|-------------------------------------------------------------------------------------------------------------------------------------|-------------------------------------------------------------------------|----------------------------------------------------------------------------------------------------------------------------------------------------------------------------------------------------|
| <ul style="list-style-type: none">• Improved Student Achievement• Narrowed Academic Gaps in Math and English | <ul style="list-style-type: none">• Reduced dropout rates | <ul style="list-style-type: none">• Reduction in Overall Special Education Placement Rates• Declines in Black male students being erroneously assigned to special education |

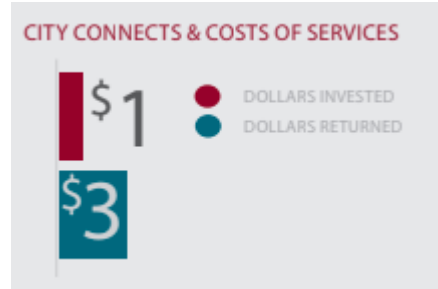
Positive Impacts on **Teachers and Schools**

| Teachers | Schools |
|--------------------------------------------------------------------------------------------------------------------------------------------------------------------------------------------------------------------------------------------------------------------------------------------------------------------------------------------------------------------------------------------------------------------------------------------|---------------------------------------------------------------------------------------------------------------------------------------------------------------------------------------------------------------------------------------------------------------------------------------------------------------------------------------------------------------------------------------|
| <p>Teachers are significantly more likely to choose to stay in a school with integrated support in place, such as City Connects</p> <ul style="list-style-type: none">● Increased work satisfaction● Feeling more supported in their jobs● Expanded understanding of students● Stronger relationships with students and their families● More responsive curricular choices | <p>Evidence Demonstrates that City Connects is associated with a host of positive impacts on schools, including:</p> <ul style="list-style-type: none">● Overall increased positive school climate● Narrowed academic gaps● Helped schools exit “Turnaround” status more quickly● Sustains positive effects of early education |

Positive Impacts for **Taxpayers**

The Center for Benefit Cost Studies of Education at The University of Pennsylvania has analyzed the return on investment of the City Connects system of integrated student support by comparing benefits to costs.

- When accounting for both the cost of implementation and the cost of comprehensive services to which children and families get connected, City Connects **produces \$3 in benefits for every \$1 invested**
- If effective integrated student support were widely implemented, existing investments in children and families could produce **triple the benefits**



In a City Connects school, compared to a typical school, on average \$5,400 per student worth of services from community partners are leveraged in support of student wellbeing and readiness to learn, driving outcomes.

Scaling City Connects in Indiana



- City Connects at the Center for Vibrant Schools, Marian University supports local implementation.
- IN uses a combination of state and federal funds to provide grants to schools, districts, and support local implementation capacity building at Marian.
- The City of Indianapolis is using City Connects data to develop a dashboard to help direct municipal and philanthropic resources more efficiently to meet the needs and interests of children and families.

In the 2022-23 school year



65 schools
implemented in
2022-23 school year



Over 17,000
students
were served



310 community
partners
provided services
to students



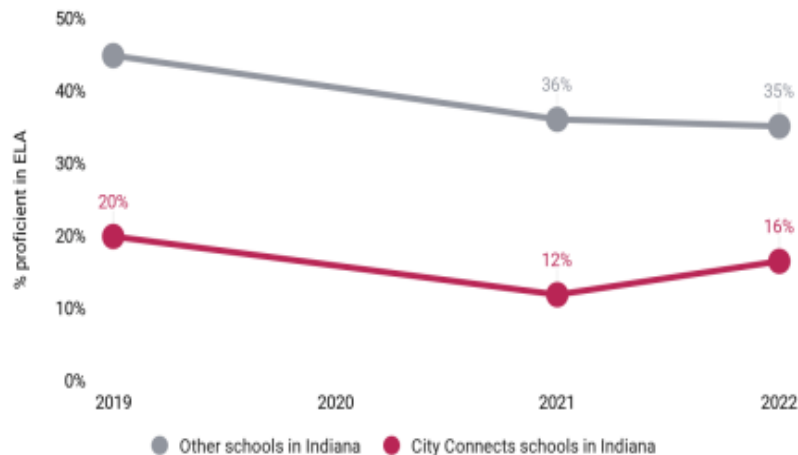
Over 79,000
services
were delivered
to students

82 Indiana schools are implementing City Connects in 2023-24

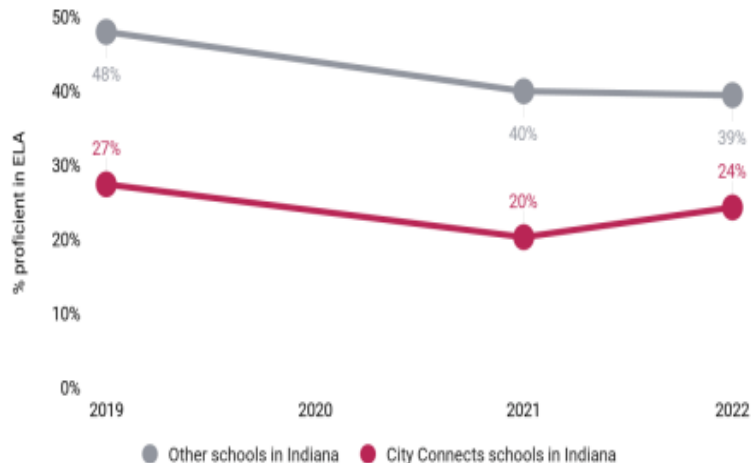
Preliminary Findings

6th and 8th graders in City Connects schools demonstrated **statistically significant increases in ELA proficiency** when compared to peers in schools without City Connects.

Percentage of 6th graders proficient in ILEARN ELA, City Connects schools vs. other Indiana schools



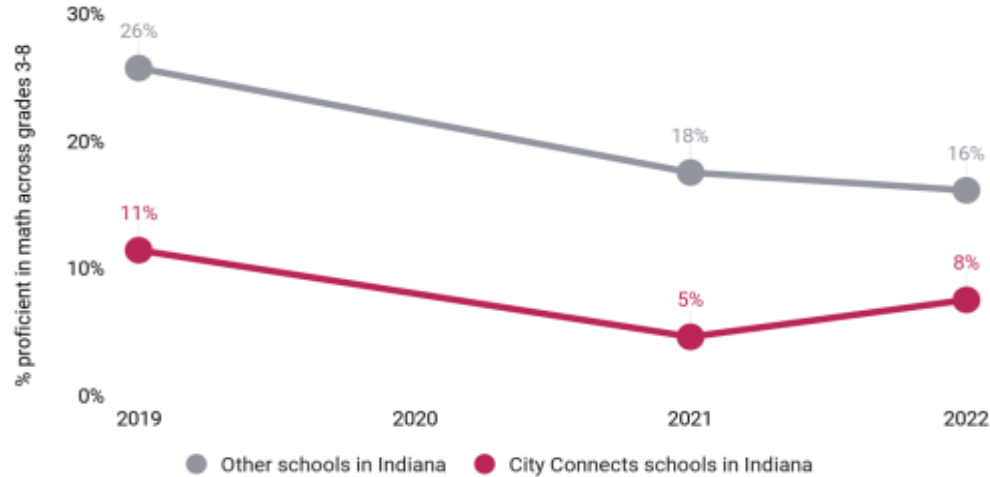
Percentage of 8th graders proficient in ILEARN ELA, City Connects schools vs. other Indiana schools



Preliminary Findings

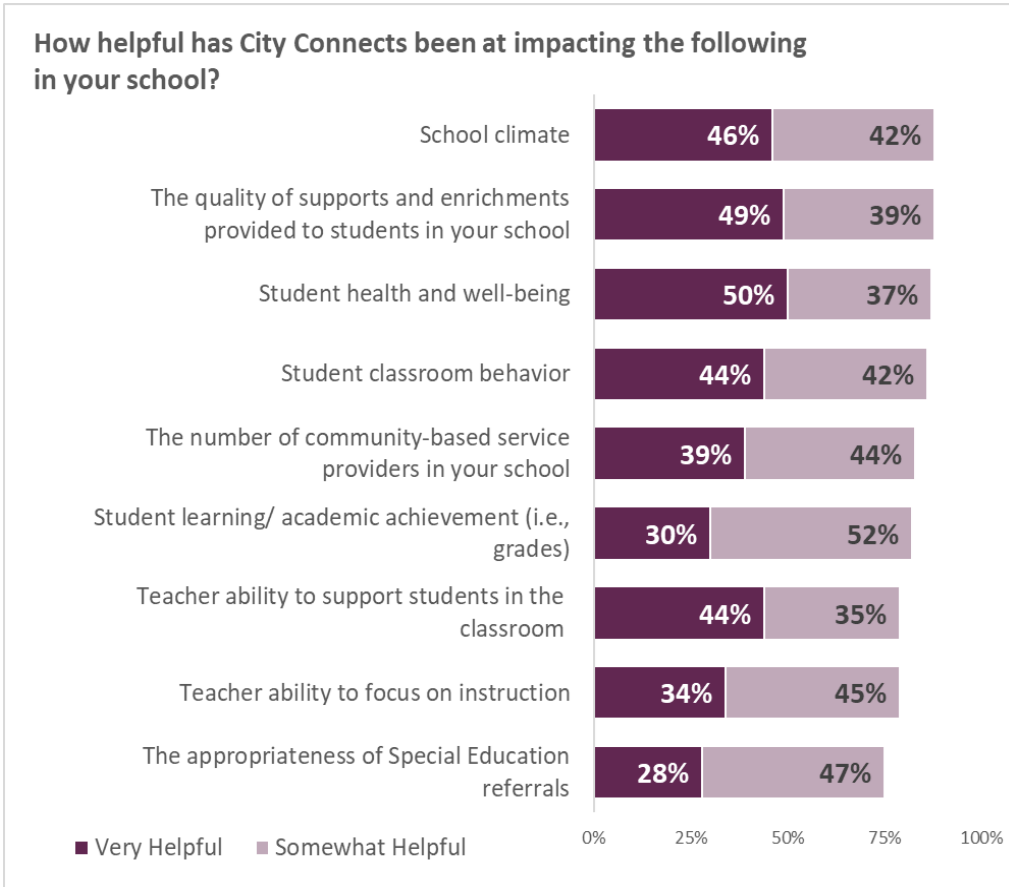
ELL students in City Connects schools had **statistically significant improvement in Math proficiency** compared to their peers in schools without City Connects.

Percentage of ELL students proficient in ILEARN Math, City Connects vs. other Indiana schools



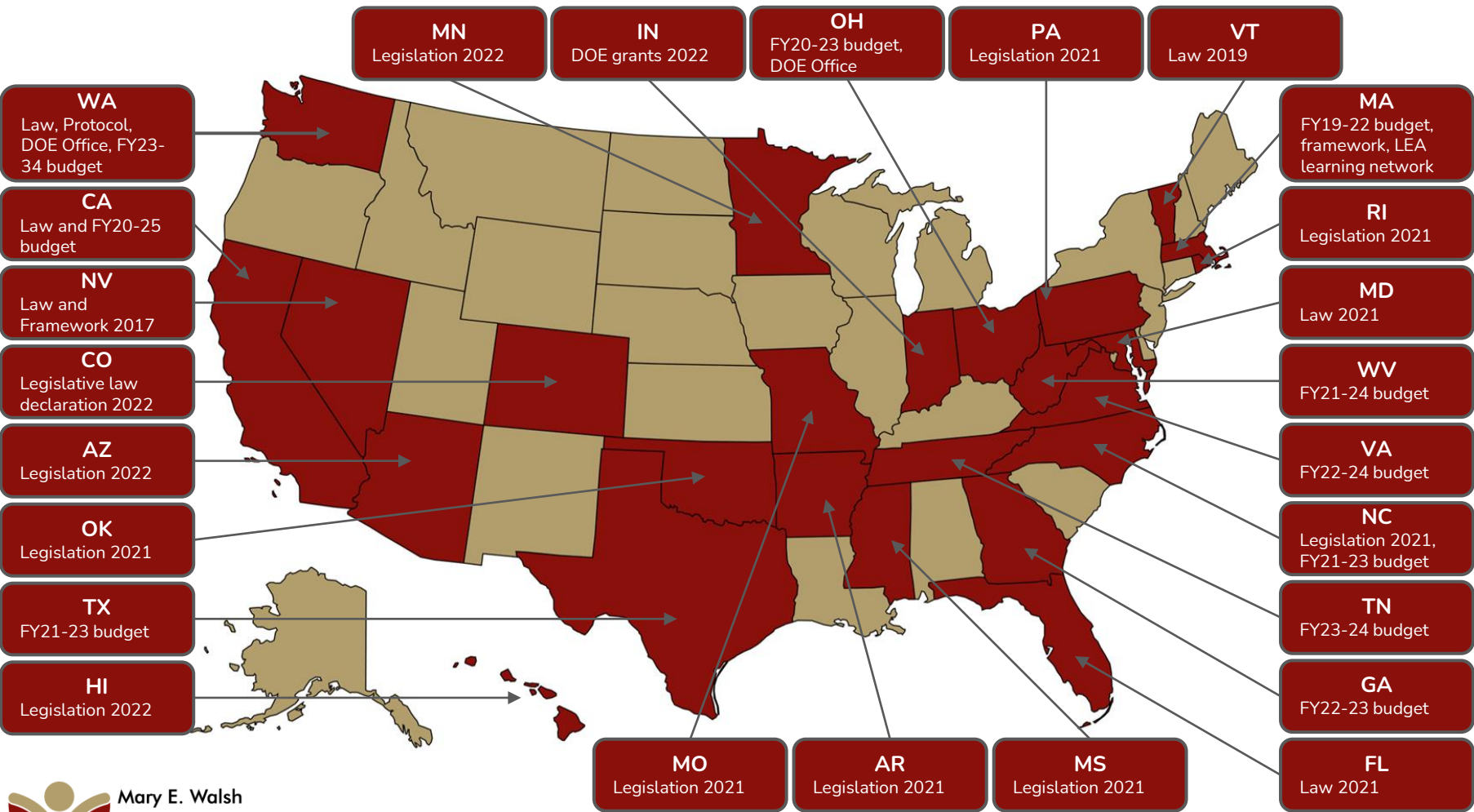
Feedback from principals in City Connects schools

Indiana **principals** reported that City Connects impacted their schools in a range of areas



Feedback from teachers in Indiana City Connects schools

- *“City Connects is an incredible bridge between the student, families, teacher, and school. The support the students get is invaluable. They have a place they truly feel is a safe space and ask to use it when necessary. My coordinator also advocates strongly for every student.”*
- *“The biggest enhancement has been being able to consider the whole student when I am planning, instructing, and providing feedback. For instance, there is a student who had vision concerns that I did not know about. I was able to adjust seating and provide printed notes for the student. There was also an instance where a family was provided services and it made working with the parent regarding academics much smoother.”*
- *“This has been a wonderful resource for our school. A complete game changer to have support on site for our students’ wraparound services and needs.”*



Key: Quality

States are advancing on three policy trajectories:

1

Advancing
frameworks and
best practices

2

Incentivizing the
implementation of
evidence-based models

3

A hybrid
approach

Questions



THANK YOU

For any questions, please email

joan.wassergish@bc.edu

rbehning@marian.edu

jlain@marian.edu

Follow us on social media



@CityConnects



[linkedin.com/showcase/city-connects](https://www.linkedin.com/showcase/city-connects)