

SENTINEL LANDSCAPES



Robert McCrea

*Southern Indiana Sentinel Landscape Landscape
Coordinator*

Attorney, Conservation Law Center

SOUTHERN INDIANA SENTINEL LANDSCAPE

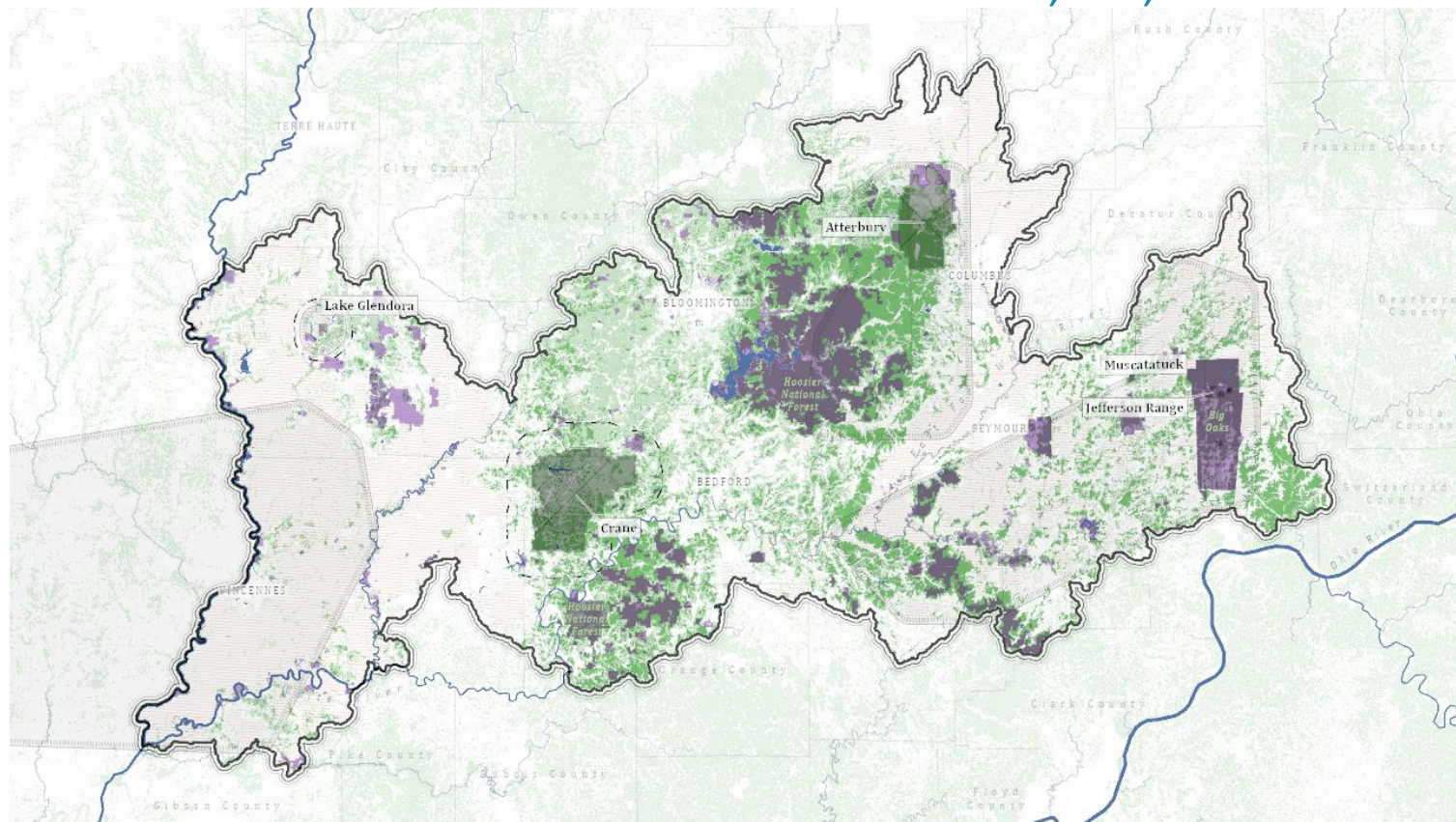


SENTINEL LANDSCAPES



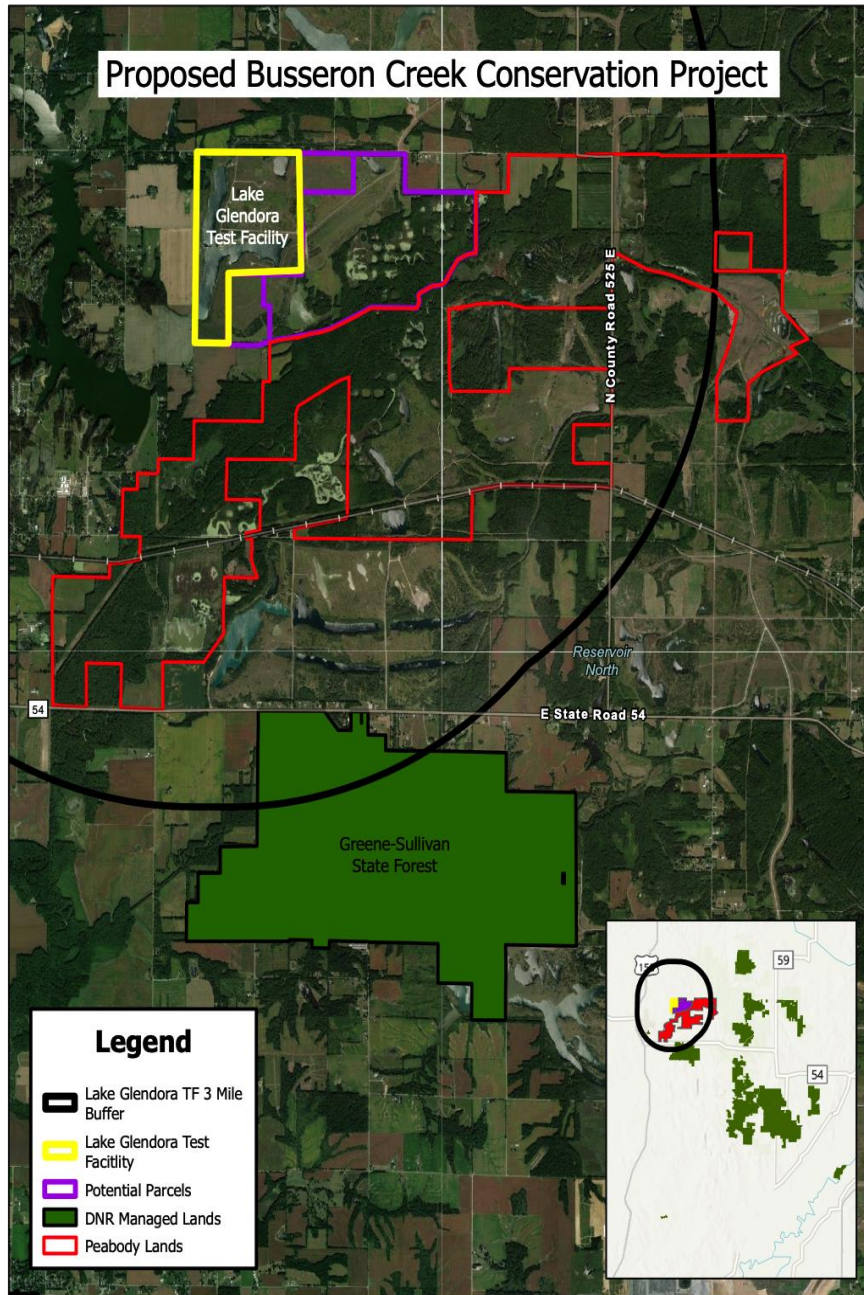
Southern Indiana Sentinel Landscape

~ 3,546,232 acres

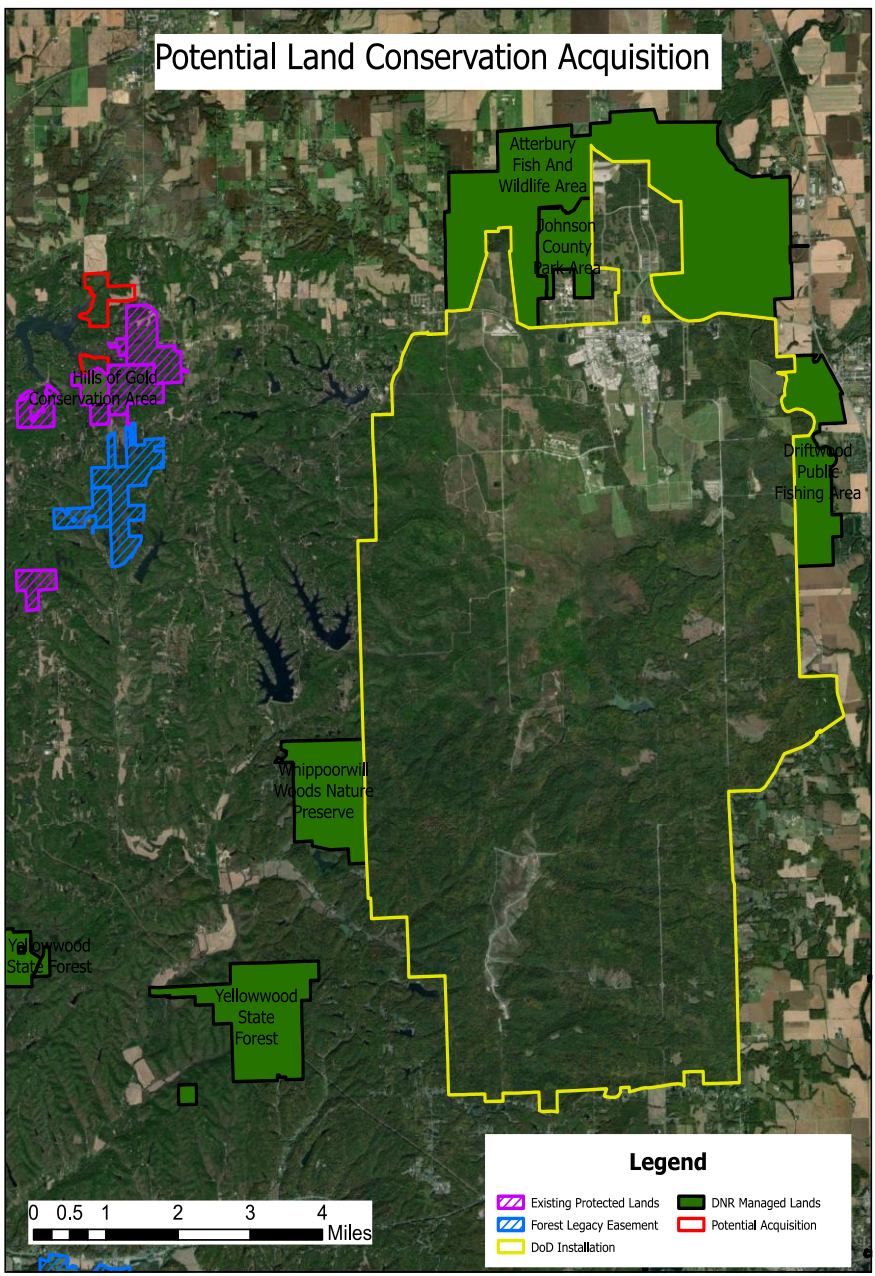


Over 300,000 acres of protected lands including Federal Land, State Land, and Protected Private Land

Proposed Busseron Creek Conservation Project



Potential Land Conservation Acquisition

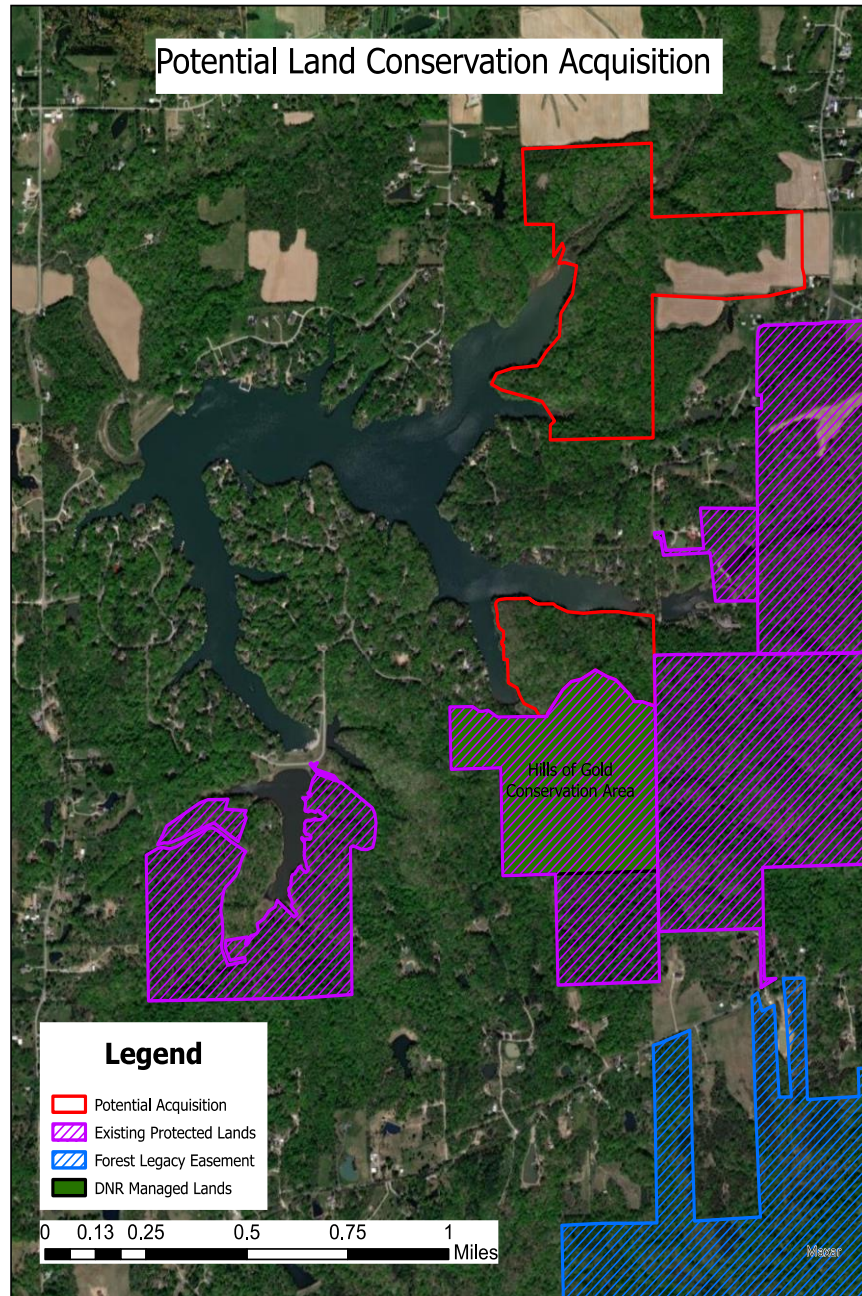


0 0.5 1 2 3 4 Miles

Legend

- Existing Protected Lands
- Forest Legacy Easement
- DoD Installation
- DNR Managed Lands
- Potential Acquisition

Potential Land Conservation Acquisition



SENTINEL LANDSCAPES



Regional Conservation Partnership Program

