



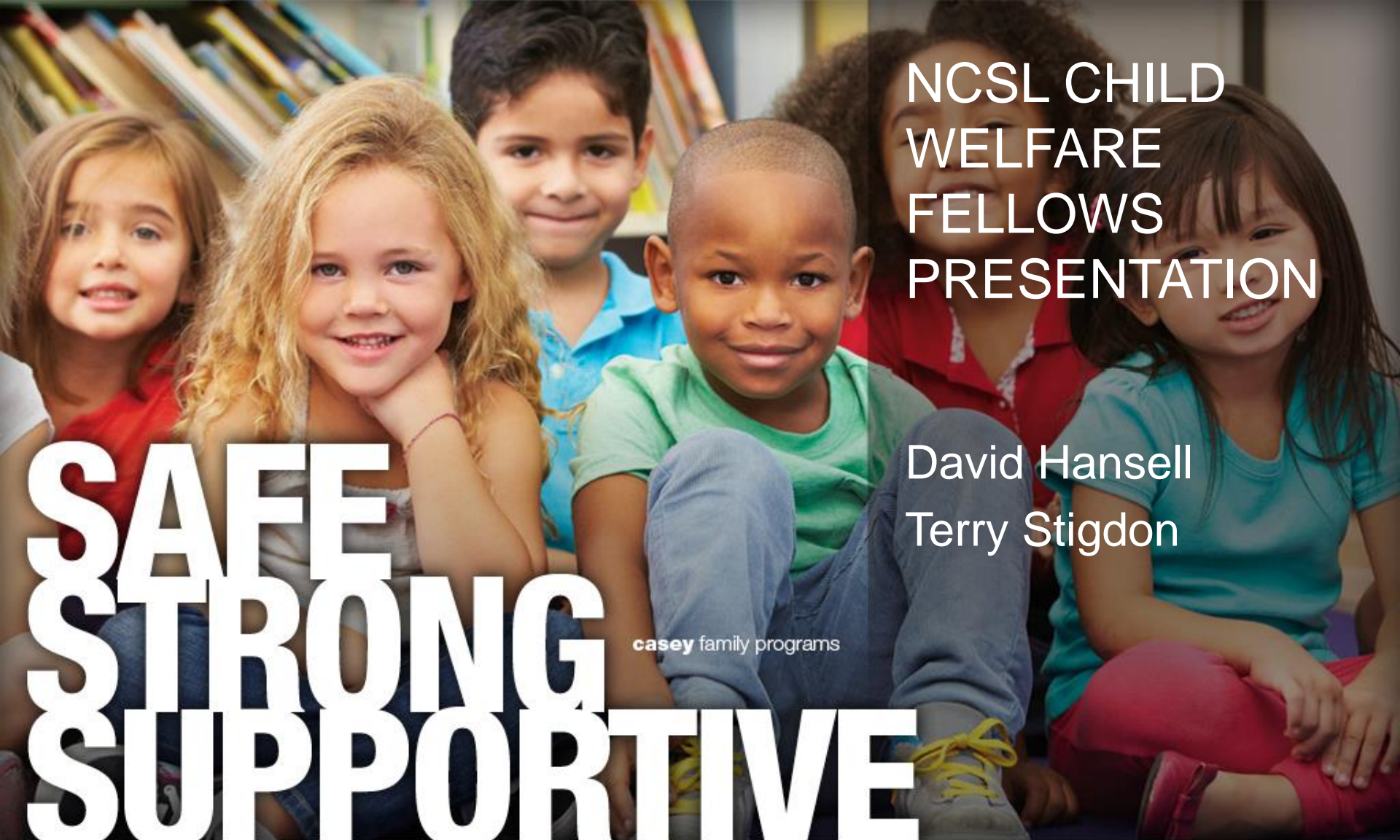
NCSL

CHILD WELFARE
FELLOWS

Rethinking the Child Welfare System: From Child Protection to Child and Family Well-Being

NCSL Child Welfare Fellows | June 26, 2023





NCSL CHILD WELFARE FELLOWS PRESENTATION

David Hansell
Terry Stigdon

SAFE STRONG SUPPORTIVE

casey family programs

SAFE CHILDREN STRONG FAMILIES SUPPORTIVE COMMUNITIES SAFE CHILDREN STRONG FAMILIES SUPPORTIVE COMMUNITIES SAFE CHILDREN STRONG FAMILIES SUPPORTIVE COMMUNITIES SAFE CHILDREN STRONG FAMILIES SUPPORTIVE COMMUNITIES SAFE CHILDREN STRONG FAMILIES SUPPORTIVE COMMUNITIES SAFE CHILDREN STRONG FAMILIES SUPPORTIVE COMMUNITIES SAFE CHILDREN STRONG FAMILIES SUPPORTIVE COMMUNITIES

safe children | strong families | supportive communities

Overview

- How should we view the “System”?
- Child Protection System: Responsibilities and Structure
- Current Issues in Child Protection
- Child Welfare System
- Child Well-Being System
- Supporting Families

Personal Introduction

David Hansell

- Senior Advisor for Child Welfare Policy at Casey Family Programs
- Served as the Commissioner of the NYC Administration for Children's Services
- Previous roles in state and federal government



Personal Introduction

Terry Stigdon

- Registered Nurse 25+ Years
- Indiana Department of Child Services
- American Red Cross





Balancing family preservation and child safety

- Minimizing system involvement
- Reunification priority
- Permanency alternatives: adoption, guardianship
- Foster care as most extreme intervention, when prevention efforts fail

Current issues/trends in child protection

“Right-sizing” child protection systems

Focusing on the “front door”

Responding to critical incidents

Focusing on the "front door": Federal definition of neglect

Act or
failure to
act

Parent or
caretaker
responsible

Serious
physical or
emotional
harm

Imminent
risk or
serious
harm

Responding to critical incidents



Traditional critical incident/response cycle: Why it's problematic



Safety culture: learning from other fields about how to enhance safety



Home-grown in Tennessee

Core Components

Prevention

- Primary
- Secondary

Intervention

Federal Legislation

- Family First Prevention Services Act (FFPSA or Family First)



Primary Prevention

Preventing involvement with child welfare system and services

- Evidence-based
- Responsibility falls to community, healthcare, education, etc.
- Examples – Healthy Families America, prenatal-to-3 programs



Secondary Prevention

FFPSA

- Historical shift for federal legislation
 - From intervention to prevention
- Reimbursement for prevention services
- Clearinghouse for approved programs
- Community pathways

Core Components



Supportive services



Continuum of service delivery



Examples: Child care, early learning, economic supports, SNAP, TANF, Medicaid, WIC

Economic supports

