

A Safety Net Hospital Approach to Addiction Care

Joshua Blum, MD, CAM Academy Medical Director
Director, Outpatient Addiction Treatment, DHHA

June 3, 2023



DENVER HEALTH
CENTER FOR ADDICTION MEDICINE™

CAM: Goal, Vision, Guiding Principles



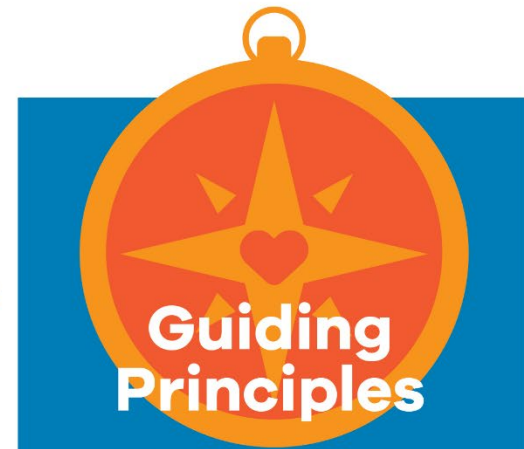
Goal

To coordinate the essential health services for persons with substance use disorders

The icon for the Goal section is a circular target with concentric rings in shades of purple and orange. The target is composed of several interlocking puzzle pieces. A black arrow points from the left towards the center of the target.

Vision

To be a compassionate model for the prevention and treatment of substance misuse, to transform lives and to educate all

The icon for the Vision section is a stylized eye shape in shades of blue. Inside the eye, there is a circular inset containing a simplified cityscape with a red square on top of one of the buildings.

Guiding Principles

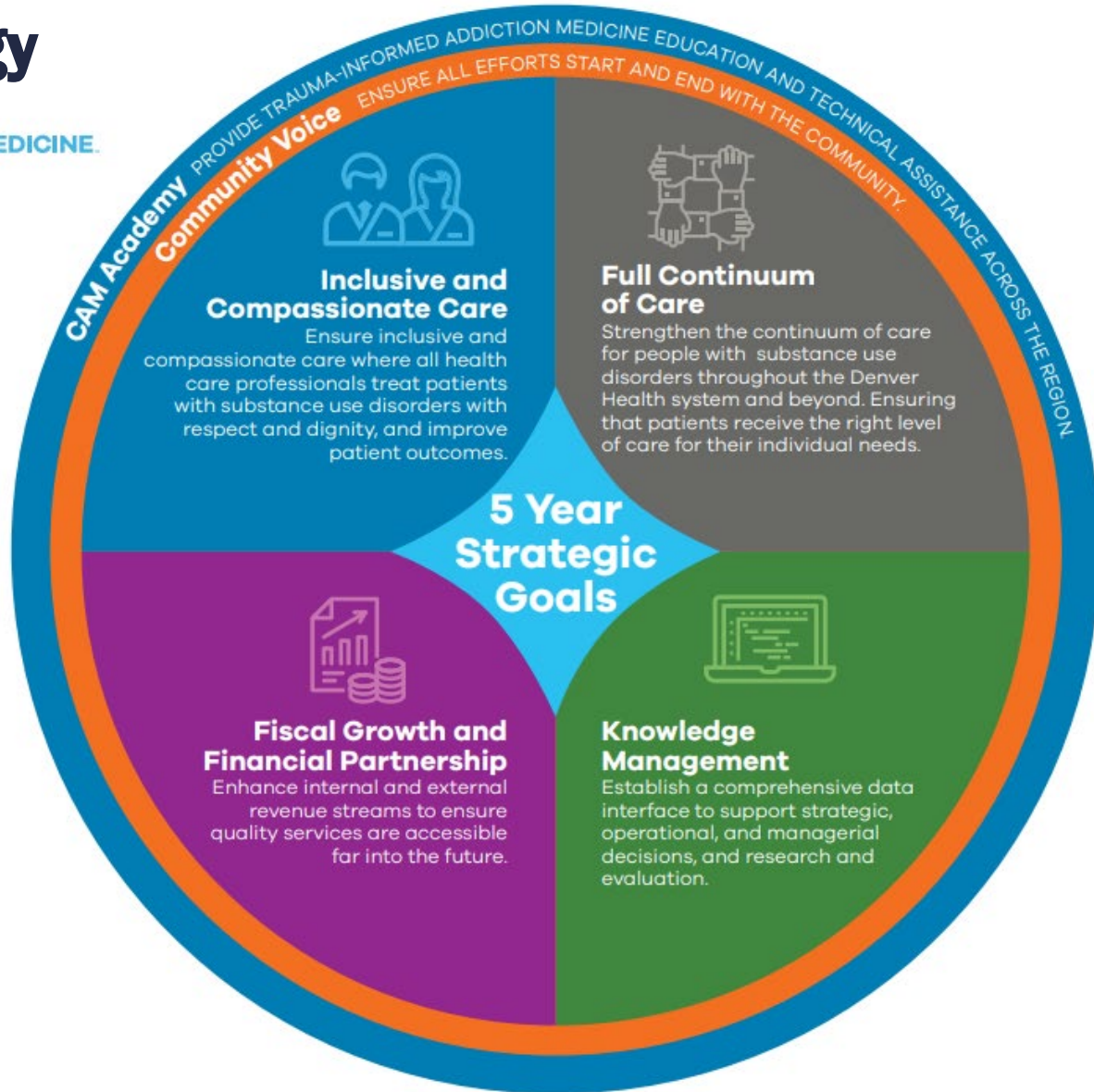
Dignity and equity
Community collaboration
Passionate and professional
Innovative prevention, treatment, research and education

The icon for the Guiding Principles section is a circular compass rose in shades of orange and red. The compass rose has four points and a heart shape in the center. The entire icon is set against a blue background.

CAM: Strategy



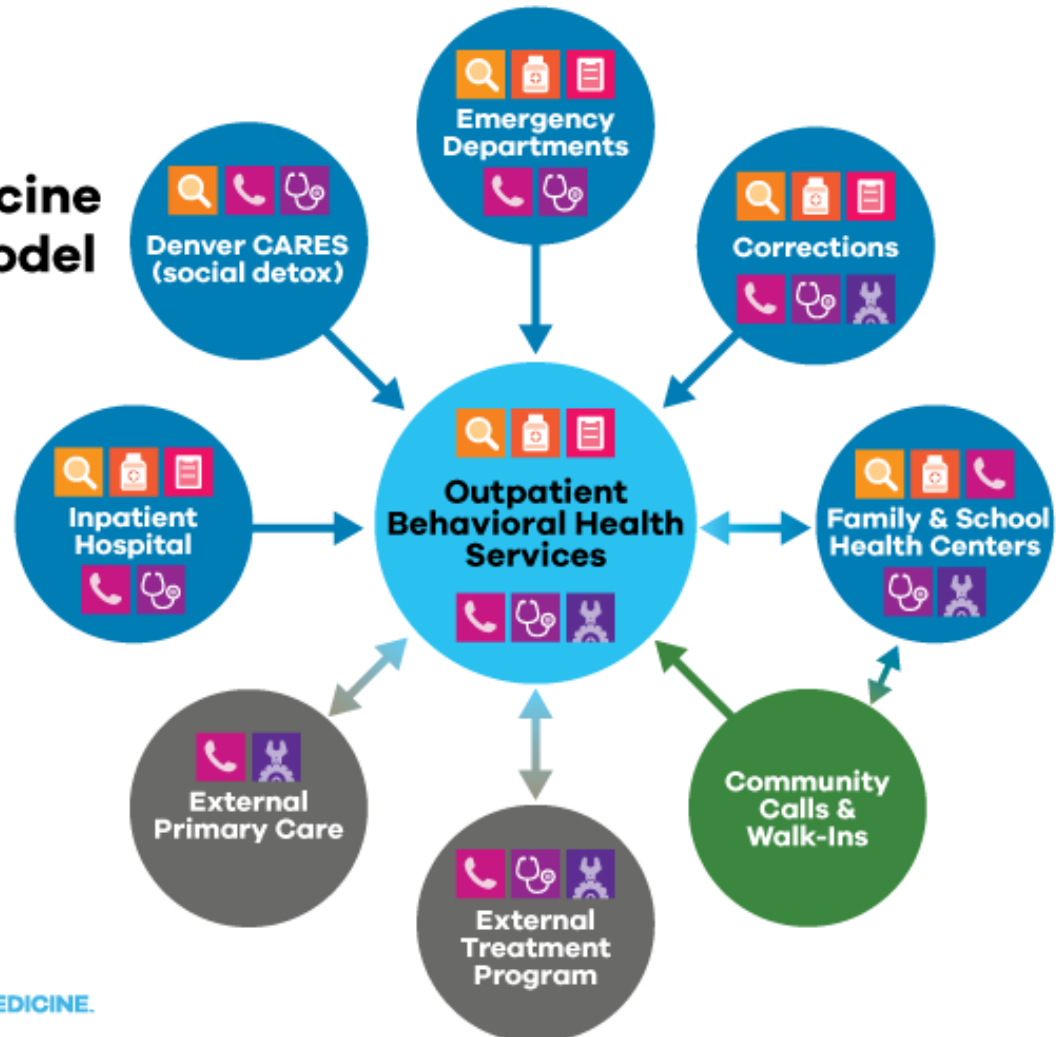
5 Year Strategic Goals



CAM: Hub & Spoke Model

Center for Addiction Medicine Hub & Spoke Model


- Identification/Diagnosis
- Opioid Induction
- Outpatient Behavioral Health Services Intake
- Referral
- Treatment
- Opioid Maintenance



Operational Resources

[Ask CAM TRAIL](#)

- Continuum of Care Dashboard
- Ask CAM Trail
- SUDT Tools
 - Referrals
 - Episodes
 - OUD Registry



DENVER HEALTH
CENTER FOR ADDICTION MEDICINE.

Ask CAM TRAIL


Ask the Center for Addiction Medicine (CAM) Technical Resources and Information Line (TRAIL)

Let our addiction experts help you connect your patients with the right programs and services.

Staff can receive assistance with any non-emergent questions related to patient substance use treatment or services one of two ways:

- By sending an Epic in-basket message to “DH ASK CAM TRAIL”.
- By calling the on-call medical provider on the AMION “Outpatient Addiction Consult” Line.

TO ACCESS THE AMION OUTPATIENT ADDICTION CONSULT LINE

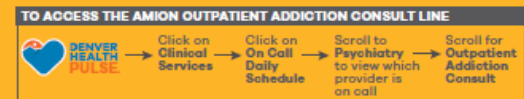
 → Click on Clinical Services → Click on On Call Daily Schedule → Scroll to Psychiatry to view which provider is on call → Scroll for Outpatient Addiction Consult

Ask CAM TRAIL is designed to be an internal resource for any Denver Health professional who is seeking information for patients on any addiction topic or treatment program inside or outside of Denver Health.

Let our addiction experts help you connect your patients with the right programs and services.

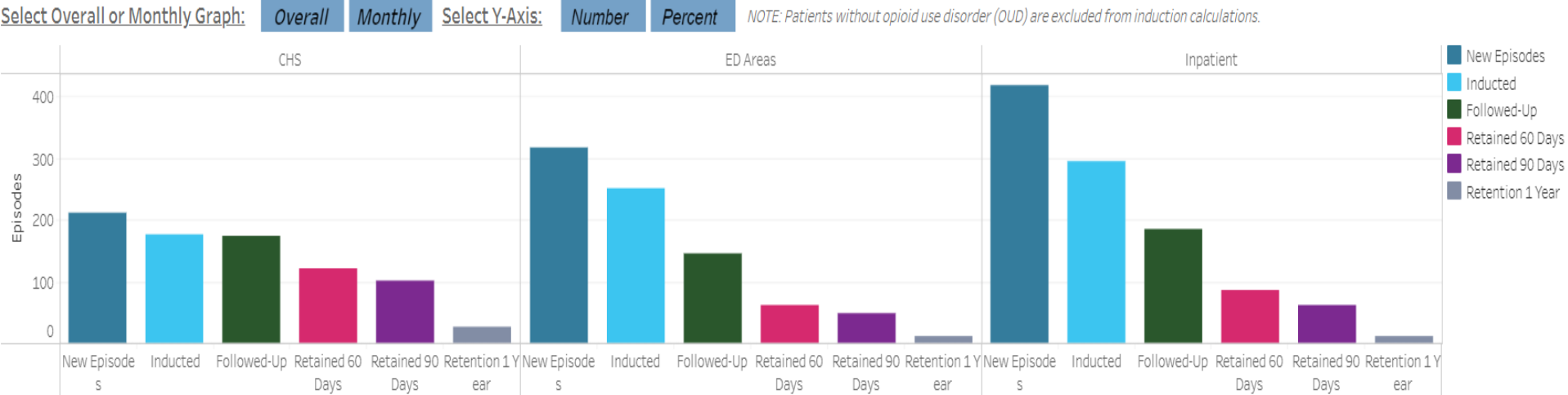
Staff can receive assistance with any non-emergent questions related to patient substance use treatment or services one of two ways:

- By sending an Epic in-basket message to “DH ASK CAM TRAIL”.
- By calling the on-call medical provider on the AMION “Outpatient Addiction Consult” Line.



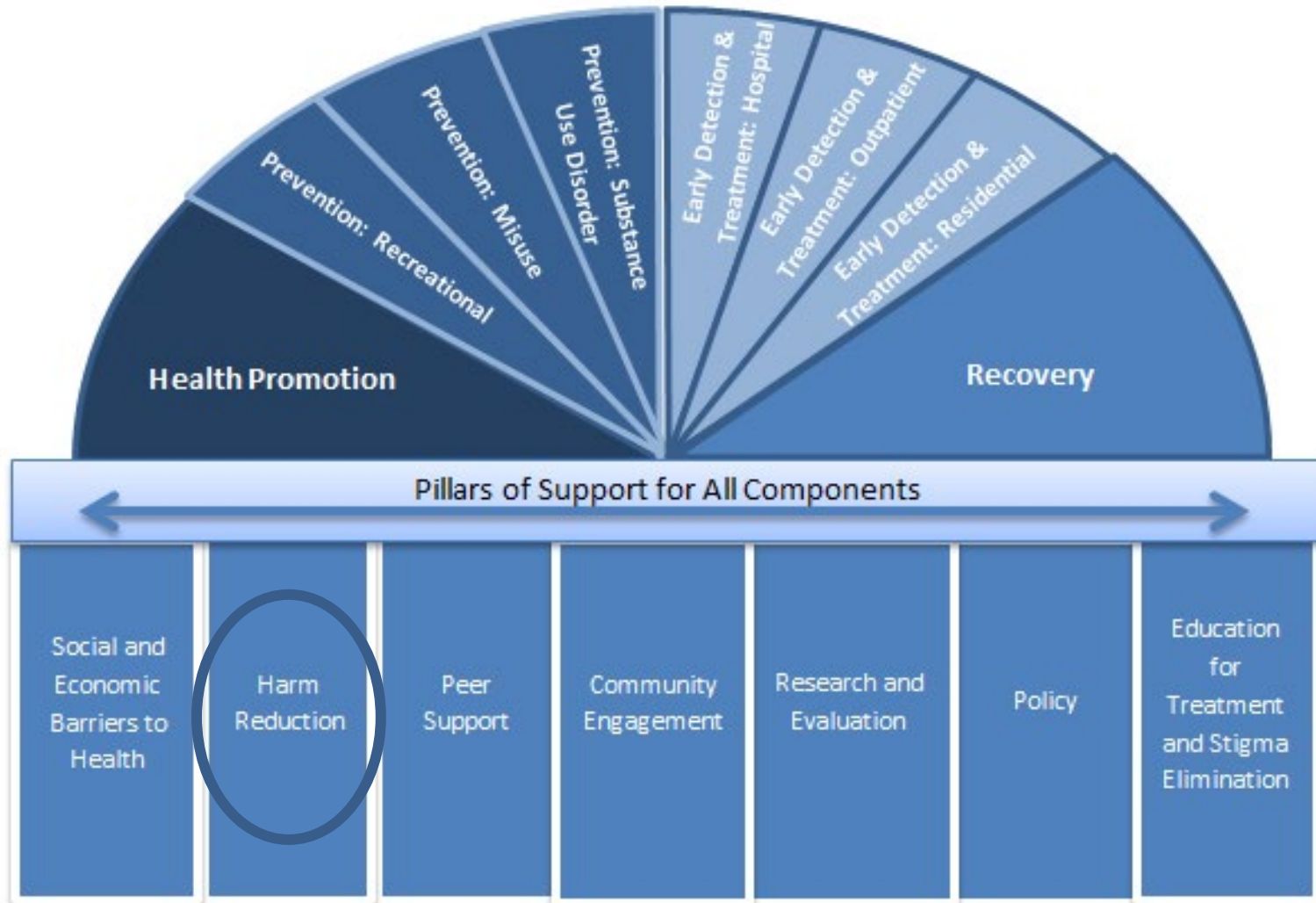
CAM: Data Tracking

[Tableau Continuum of Care](#)



Where is the CAM Going?

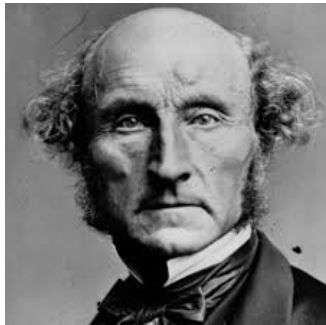
Vision of Addiction Continuum of Care



HR Ethical Framework



- Deontology
 - Categorical Imperative test
 - Universal ethics
 - Emphasis on personal choice and autonomy
 - Consequences irrelevant
 - “First, do no harm”



- Utilitarianism
 - Action is moral if it promotes the greatest benefit for the greatest number

- Virtue
 - Focus on the character of the agent, rather than the act
 - Takes into account context and consequences
 - Provides an ethical foundation without resorting to utilitarianism

Lev-Ran S et al. *Is J Psychiatry Rel Sci* 2014

Christie T et al. *Int J Drug Policy* 2008



DENVER HEALTH
CENTER FOR ADDICTION MEDICINE™

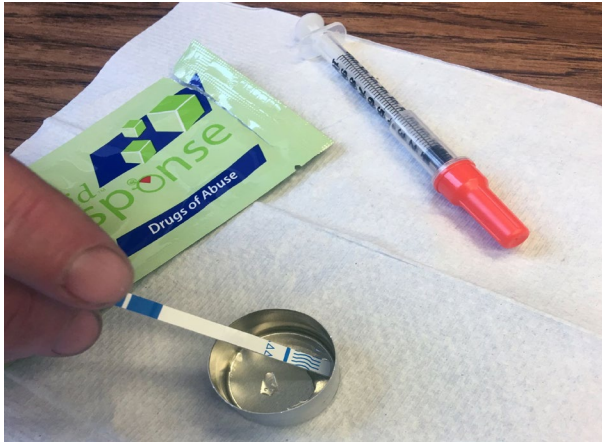
Harm reduction is...

- Compassionate
- Collaborative
- Human rights-oriented
- Data-driven
- Autonomy
- Beneficence
- Non-maleficence
- Justice

“Pragmatic beneficence vs. unattainable ideal beneficence”

Lev-Ran S et al. *Is J Psychiatry Rel Sci* 2014

HR Examples



DENVER HEALTH
CENTER FOR ADDICTION MEDICINE™

MAT Saves Lives

- Methadone, buprenorphine: ↓ risk of death

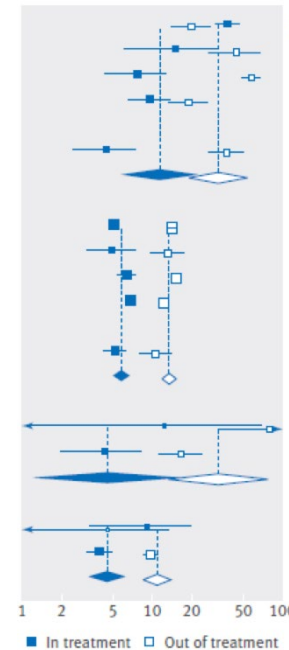
- Methadone 11.3% vs. 36.1%
- Buprenorphine 4.3% vs. 9.5%

- Mortality ↓ sharply in first 4 weeks of treatment

- **25 fewer deaths per 1000 person-years for those who continue tx**

- ***Bonus time:***

Decreased mortality from suicide, cancer, alcohol, other drugs, cardiovascular disease



Questions?
Thank you!

Contact

Joshua.Blum@dhha.org

Center for Addiction Medicine –
CAM@dhha.org



DENVER HEALTH
CENTER FOR ADDICTION MEDICINE™