



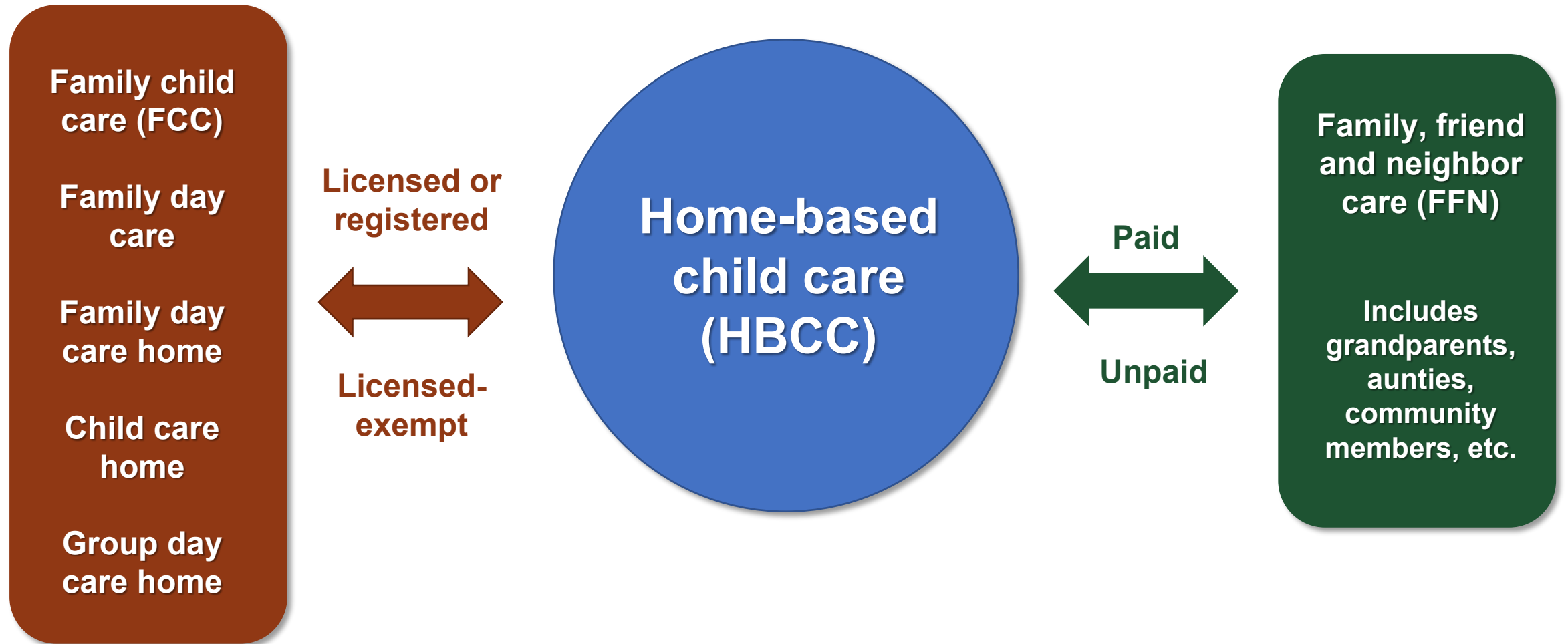
# GOING BIG *AND* GOING HOME:

SUPPORTING HOME-BASED CHILD CARE

NATIONAL CONFERENCE OF STATE  
LEGISLATURES



# What's in a name?



# Today's Guests



Alexandra Patterson

Director of Policy and Strategy  
Home Grown



Deborah Young Ed.S., Ph. D.

Family, Friend and Neighbor  
Child Care Provider

# National Home-Based Child Care Landscape

## Where are young children having their early childhood experiences?

- **6 million children, aged 0-5**, in home-based child care
- **30% of infants and toddlers** attend home-based child care as their primary care arrangement compared to just 12% in centers
- **FACT SHEET**

## Diverse workforce

- 5 million HBCC
- 97% women
- 50% providers of color
- 18% of the child care workforce identify as immigrants (more likely to work in FCC)



## Serves families who are furthest from resources and under-served by ECE

- Children whose parents work nontraditional hrs
- Children from low-income families
- Black and Latinx children
- Children in rural areas
- Children with special needs





# Why do families choose home-based child care?



# Home-Based Child Care Landscape



**HOME GROWN**

**"EVEN THOUGH I AM WITHOUT RESOURCES MYSELF, [I LOVE] BEING ABLE TO FIND RESOURCES FOR FAMILIES AND PROVIDE THAT NORMALCY FOR THAT FAMILY AND THE QUALITY OF CARE."**

CYNTHIA DAVIS  
FAMILY CHILD CARE PROVIDER  
WASHINGTON, DC

**Long hours with low compensation**

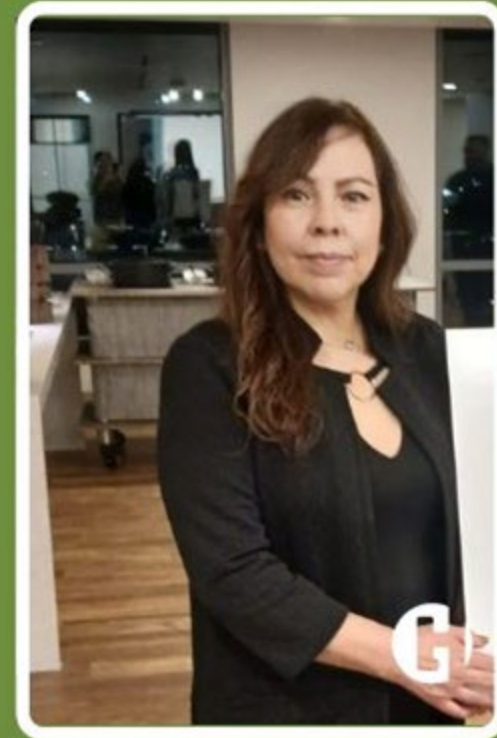
FCC providers, work an average of **56 hours a week** and earn **\$29,377 a year**. **30%** rely on at least one other job.

# Home-Based Child Care Landscape



As a family, friend and neighbor caregiver, I struggle to make fair wages and still support the families in the community that need me. I am always thinking about what everyone needs: the families, the children, and my family. It often keeps me up at night..

OLIVIA HERNANDEZ | CO  
FAMILY, FRIEND AND NEIGHBOR CAREGIVER



## Long hours with low compensation

FFN caregivers, when paid, **earn \$7,420 annually**. **40%** of caregivers rely on at least one other job besides child care to make ends meet.





# Home-Based Child Care Landscape

“

*“Last year about half of the children (twelve kids from 1 years old to 10 years) in my program arrived without having had breakfast. Now every single child arrives needing breakfast.”*

---

HOME-BASED CHILD CARE PROVIDER



**Experiencing hunger**

**One in three** child care providers reported experiences of hunger

(2022, RAPID EC)



# Home-Based Child Care Landscape



**Uninsured or underinsured**

15 - 21% do not have health insurance



"We need [policymakers] to pay attention to us. We are making the United States economy better. We, the early childhood educators, make it possible for all parents, moms and dads, to go to work. Can you imagine if all of us went on a strike for a week? Like any other job, we deserve paid time off. We deserve health insurance. We deserved a retirement fund."

KHULOOD JAMIL | CA  
LICENSED FAMILY CHILD CARE PROVIDER



# Home-Based Child Care Landscape



## Housing insecure

Over one quarter (28%) of home-based providers were somewhat or very worried about being evicted from their homes [\(2023, RAPID EC\)](#)



The housing market has doubled and tripled in price. I just don't think that I'll ever be able to afford a place like what I would hope to have, which is a home for my family and a separate space for my home-based child care program.

BRIANNE MOLINE | MT  
LICENSED HOME-BASED CHILD CARE PROVIDER



# Home-Based Child Care Landscape



"I HAVE OVER \$50,000.00 IN STUDENT LOAN DEBT FROM OBTAINING [...] MY MASTER'S DEGREE IN EARLY CHILDHOOD EDUCATION. MY ESTIMATED MONTHLY STUDENT LOAN REPAYMENTS ARE \$601.99. I AM A 62 YEARS OLD SINGLE, EDUCATED, WOMAN OF COLOR AND MY AVERAGE YEARLY INCOME IS \$30,000. I SHOULD BE THINKING ABOUT RETIREMENT, NOT WORRYING ABOUT HOW TO PAY A STUDENT LOAN."

*Home-based Child Care Provider in Pennsylvania*



## Carrying student debt

19% reported that they had student debt (compared to 17% of the US adult population overall\*)





# Home-Based Child Care Landscape

Under-supported by **center-centric early childhood systems** with measures of quality, monitoring processes and resources focused on other child care settings.

## Declining supply of regulated FCC

- Between 2006 and 2015, the number of home-based providers receiving subsidies through the Child Care and Development Block Grant declined by **more than 60%**.
- The 2019 National Survey of Early Care and Education data indicate a **25% decrease** in the number of listed educators since 2012 ([2021, Erikson Institute](#))



Include family child care in the education system because the first three years are very important for brain development. We're not babysitters. We are more than that. We are helping all the children and families.

OSCAR TANG AND PYRENA HUI | CA  
MODERN EDUCATION FAMILY CHILDCARE



# Today's Guests



Alexandra Patterson

Director of Policy and Strategy  
Home Grown



Deborah Young Ed.S., Ph. D.

Family, Friend and Neighbor  
Child Care Provider

# Home-Based Child Care Solutions



## Support

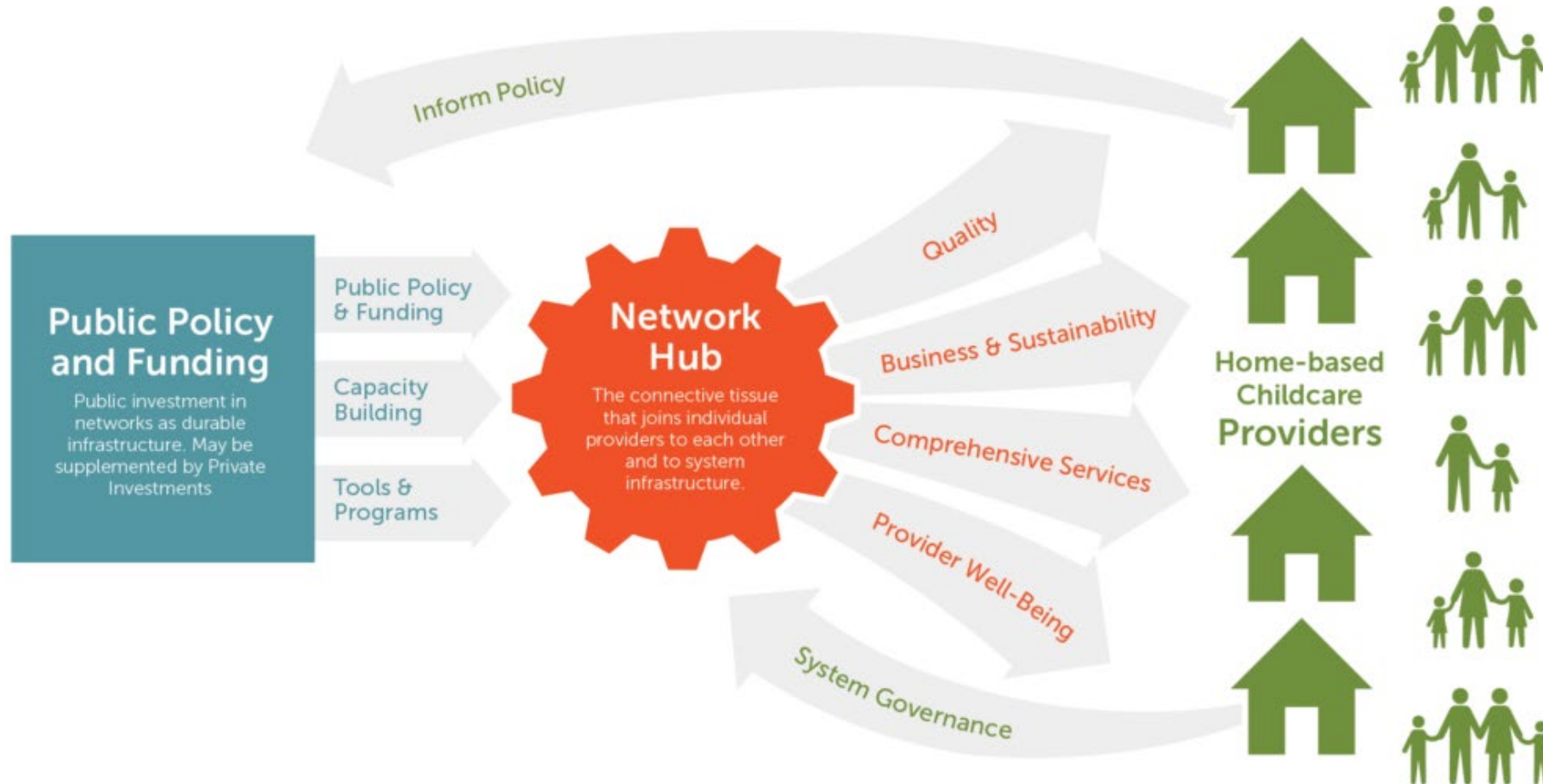
- **Delaware FCCH Network** - State \$\$, pipeline of supports for FCCH to offer state preK
- **Michigan FCCH Networks** - Early Childhood Investment Corporation, federal relief \$\$ to establish supply-building opportunities specifically for entrepreneurs that operate home-based child care programs to incubate and launch family child care networks
- **Harris County, Texas** - Local \$\$ and federal relief \$\$ for shared service networks for home-based Caregivers (both FCC & FFN)
- **New Lebanon, New Hampshire** - Local \$\$ for FCC networks; exploring replication with federal Preschool Development Block Grant \$\$
- **Colorado** - \$7 million for training and quality support for FFN; FFN eligible for federal \$\$ through the Child and Adult Care Food Program



# Home-Based Child Care Solutions



## Comprehensive Network Strategy



# Home-Based Child Care Solutions



## Compensation/Material Hardship

- **California FFN & FCCH SEIU & AFSCME Union Participation**
  - FFN access 75% of market rate for federally-funded child care subsidy
  - FFN and FCCH access to health care benefits (premium reimbursement and out-of-pocket expenses)
- **Kentucky**- Categorical eligibility for child care workers for federally-funded child care subsidy
- **King County, Washington** - Local \$\$; FCC wage supplement & FFN subsidy

# Home-Based Child Care Solutions



## Housing

- **California, Colorado, Montana** - Enacted legislation protecting HBCC delivering child care in their homes
  - CA SB 234
  - CO HB21-1222
  - MT HB 187
- **Nevada** - State and private \$\$ to Mission Driven Finance. Purchase homes, home repairs, provide child care friendly rent to own home ownership program for HBCC





“

*The **cost of everything** has gone up so high and it's hard for us providers to charge more to the parents as childcare is the 2nd largest bill for the parents to pay.”*

---

**HOME-BASED CHILD CARE PROVIDER**



What policies has your state considered to support home-based child care?







# Questions?



# Stay Connected

- [Find legislation](#) on NCSL's Early Childhood Legislative Database
- [Read](#) our 2022 Early Childhood Legislative Trends Report
- [Subscribe](#) to the Children, Youth and Families newsletter
- Reach out with questions to [jennifer.palmer@ncsl.org](mailto:jennifer.palmer@ncsl.org)

