

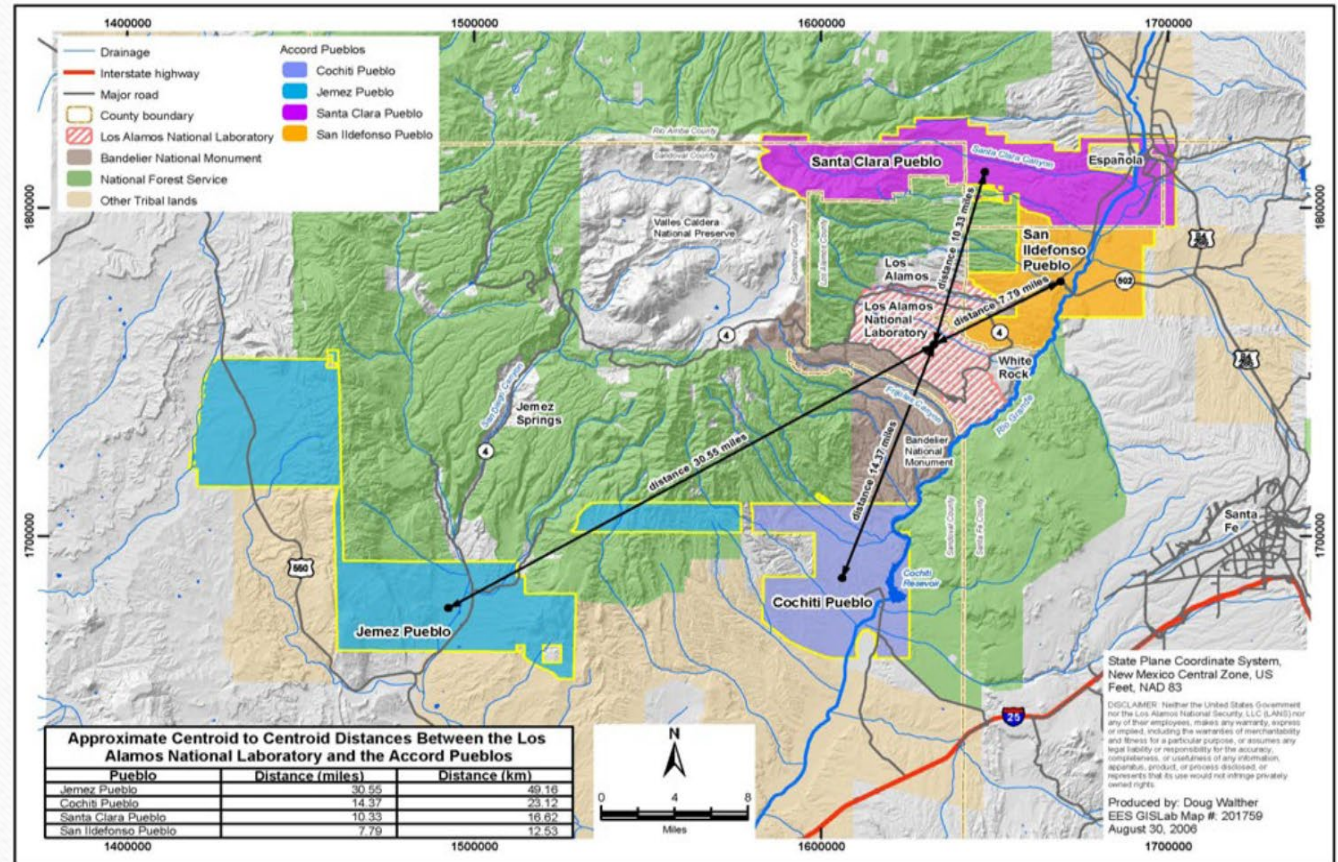
Pueblo of Jemez

Natural Resources Department (NRD)

Los Alamos Pueblos Project (LAPP)

History & Background

- The Pueblo of Jemez is located in Northern New Mexico. The Pueblo of Jemez (POJ) currently has three discrete land parcels. The main Village is 30 miles southwest of Los Alamos National Laboratory (LANL).
- A Cooperative Agreement was made between the POJ and LANL in 1994.
- POJ continues to utilize the Natural Resources and Cultural Sites in the region.



Los Alamos National Laboratory and the Four Accord Pueblos of Jemez, Cochiti, San Ildefonso, and Santa Clara

Sampling Background

- The POJ NRD has been collecting these environmental samples, near the village and from surrounding lands for the before mentioned environmental media, since 1996.

Environmental Media analyzed for Constituents of Potential Concern (COPC's).

- The primary objective is to generate a comprehensive environmental dataset for which the relative concentrations of identified COPC's present in environmental media of concern can be assessed with respect to potential risks posed to human health and safety.
- Air
- Crop
- Surface water
- Soil
- Sediments
- Animals (elk)

Inorganic COPCs

- Aluminum – Air, Sediment, Surface Water
- Arsenic – Crop, Sediment, Soil, Surface Water
- Beryllium – Air, Sediment
- Chromium – Sediment, Surface Water
- Iron – Sediment, Surface Water
- Manganese – Air, Sediment, Surface Water
- Nickel – Sediment
- Selenium – Crop, Elk, Sediment, Soil, Surface Water
- Uranium – Crop, Elk, Sediment, Soil
- Vanadium – Sediment

Radionuclides Historically associated with releases by LANL

- Americium - 241 - Surface water
- Cesium – 137 – Crop, Elk, Soil
- Plutonium – 238 – Sediment, Surface Water
- Plutonium – 239/240 – Crop, Soil, Surface Water
- Strontium – 90 – Soil, Surface Water
- Thorium – 230 – Surface Water
- Uranium – 234 – Air, Sediment, Soil, Surface Water
- Uranium – 235/236 – Air, Crop, Surface Water
- Uranium – 238 – Air, Crop, Surface Water

Sediment & Soil Sampling





Air Monitoring





Surface Water & Crops





Equipment

- Air—filters, calibrator
- Water—Agitator/”Butter” Churner
- Sediment—sieves, 5 gallon buckets, milk crates
- Soil—Hand held auger
- Crops—2 gallon Ziploc bags
- Gloves



Sediment sifter



Auger used for soil



Scooper



Agitator aka “Butter Churner”