

# GEORGETOWN CLIMATE CENTER

*Emissions Market Mechanisms in the U.S.  
May 19, 2022*

# Georgetown Climate Center: What We Do

Policy  
Development



Convening &  
Staffing Climate  
Initiatives



Opportunities  
for Students



Serve as a  
Resource to States  
and Communities



# Regional Greenhouse Gas Initiative (RGGI)

---

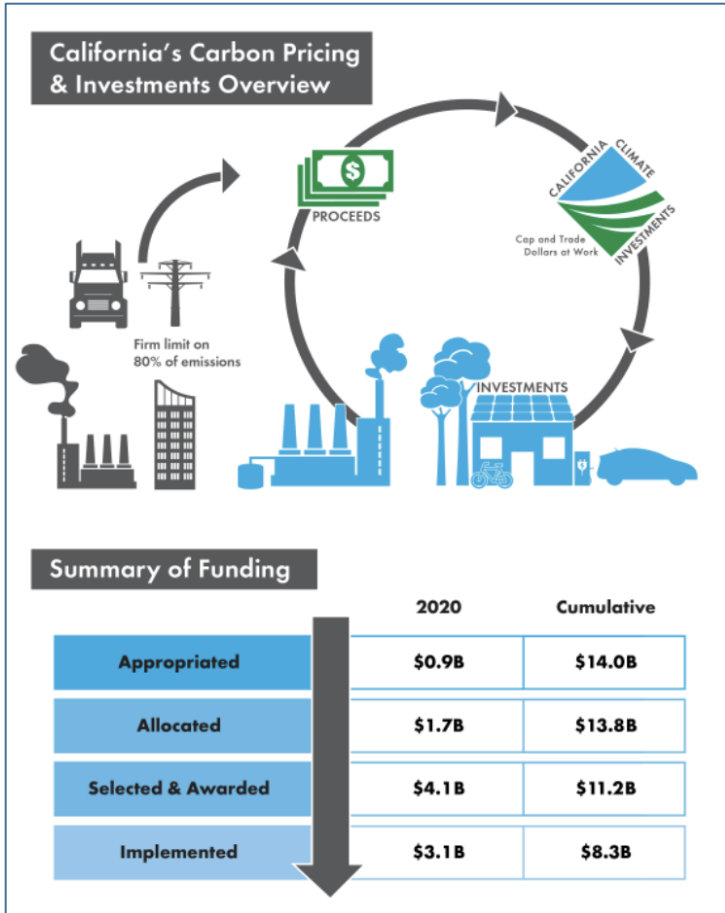


- Launched in 2009
- Northeast and Mid-Atlantic states
- Bipartisan state collaboration
- Power sector CO<sub>2</sub>

Source: RI DEM

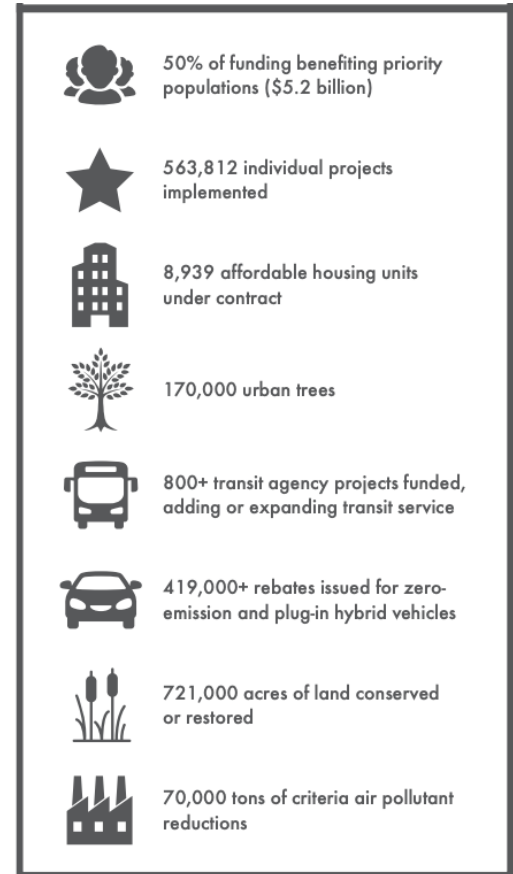
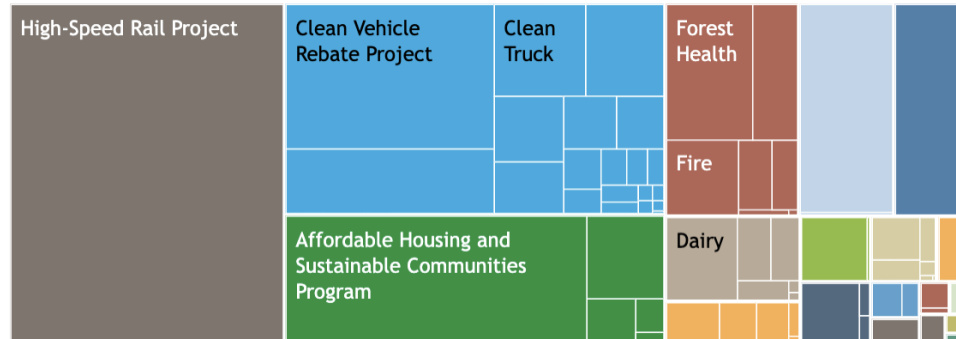
# California

- Launched in 2012
- Linked with Quebec, through WCI
- Multi-sector, multi-pollutant



### Project Investments by Agency and Program

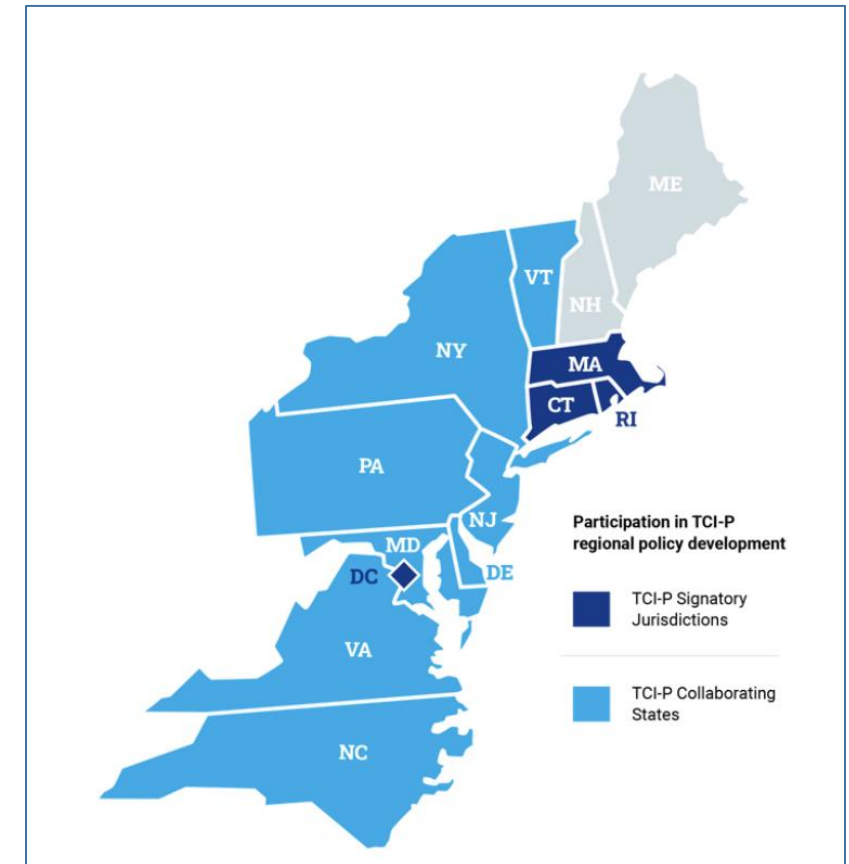
Projects shown here are considered "implemented." See the Annual Report for details. *Please note: These funds do not include "Intermediary Administrative Expenses" and are current as of November 30, 2021.*



# Transportation and Climate Initiative Program (TCI-P)

## Program Goals

- Reduce CO<sub>2</sub> emissions from transportation sources
- Improve air quality and public health, increase resilience to the impacts of climate change, and provide more affordable access to clean transportation choices
- Promote local economic opportunity and create high quality jobs
- Maximize the efficiency of this multijurisdictional program to ensure greater benefits
- Advance equity for communities overburdened by pollution and underserved by the transportation system

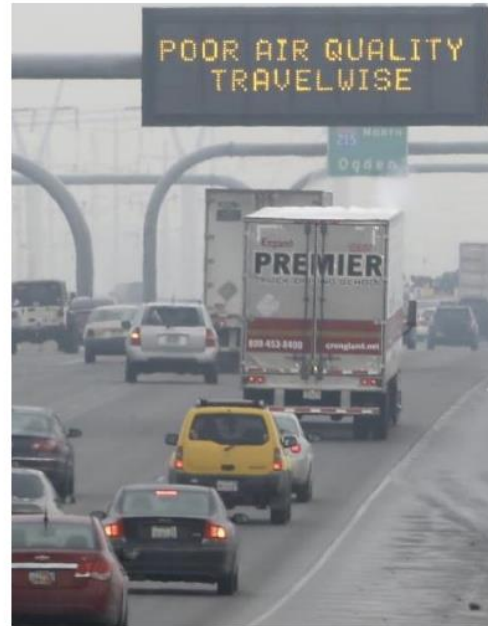


# Transportation and Climate Initiative Program (TCI-P)

**\$290 million each year in health and safety benefits**

- ↓ Premature deaths
- ↓ Asthma symptoms
- ↓ Traffic-related injuries

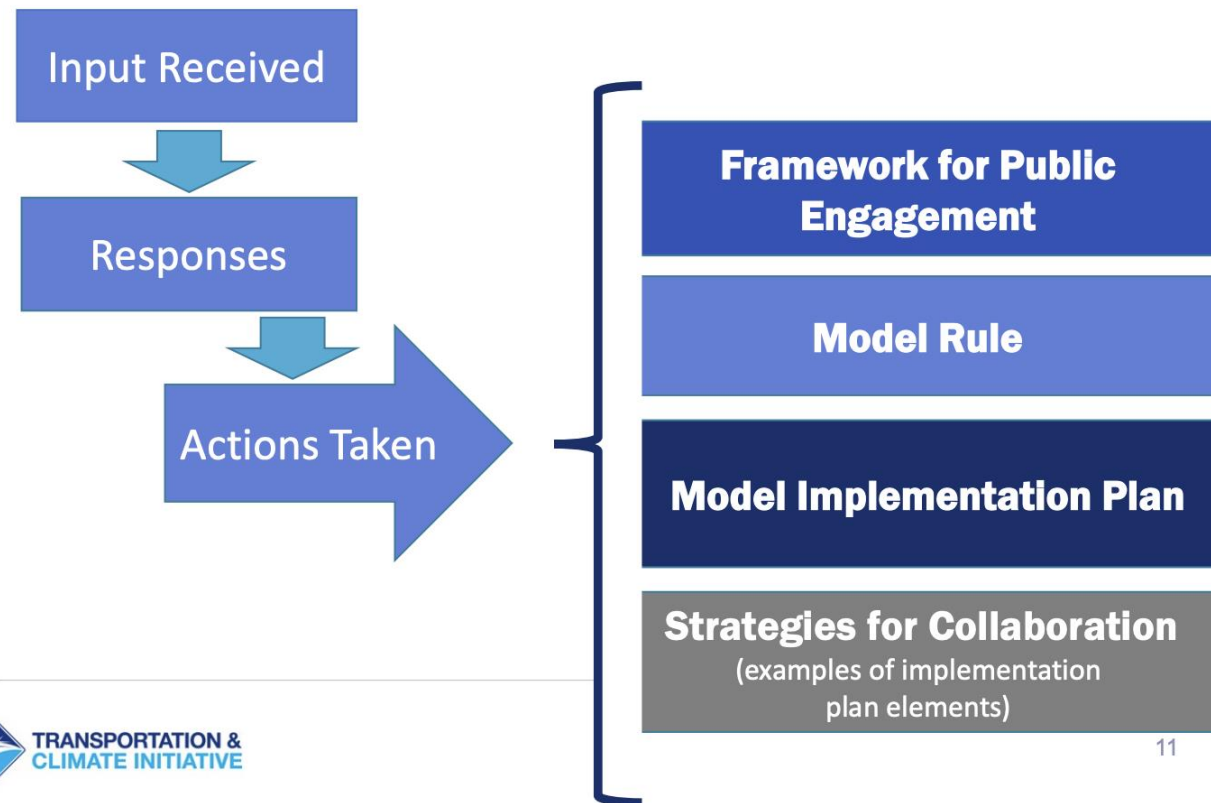
Up to \$3.3 billion in health & safety benefits with full participation



Results from the Transportation, Equity, Climate and Health (TRECH) Project, an independent multi-university research initiative led by the Harvard T.H. Chan School of Public Health and from Cambridge Systematics, using the TCI Investment Strategy Tool.

# Transportation and Climate Initiative Program (TCI-P)

## Summary of Public Input and Responses



# Washington State



Source: Library of Congress

GEORGETOWN CLIMATE CENTER



# Thank you!

Kate Zyla, [zyla@georgetown.edu](mailto:zyla@georgetown.edu)

Connect with us on social media:

 @Climate\_Center

 @GeorgetownClimate

GEORGETOWN CLIMATE CENTER