



Cooperating Agency Under the National Environmental Policy Act

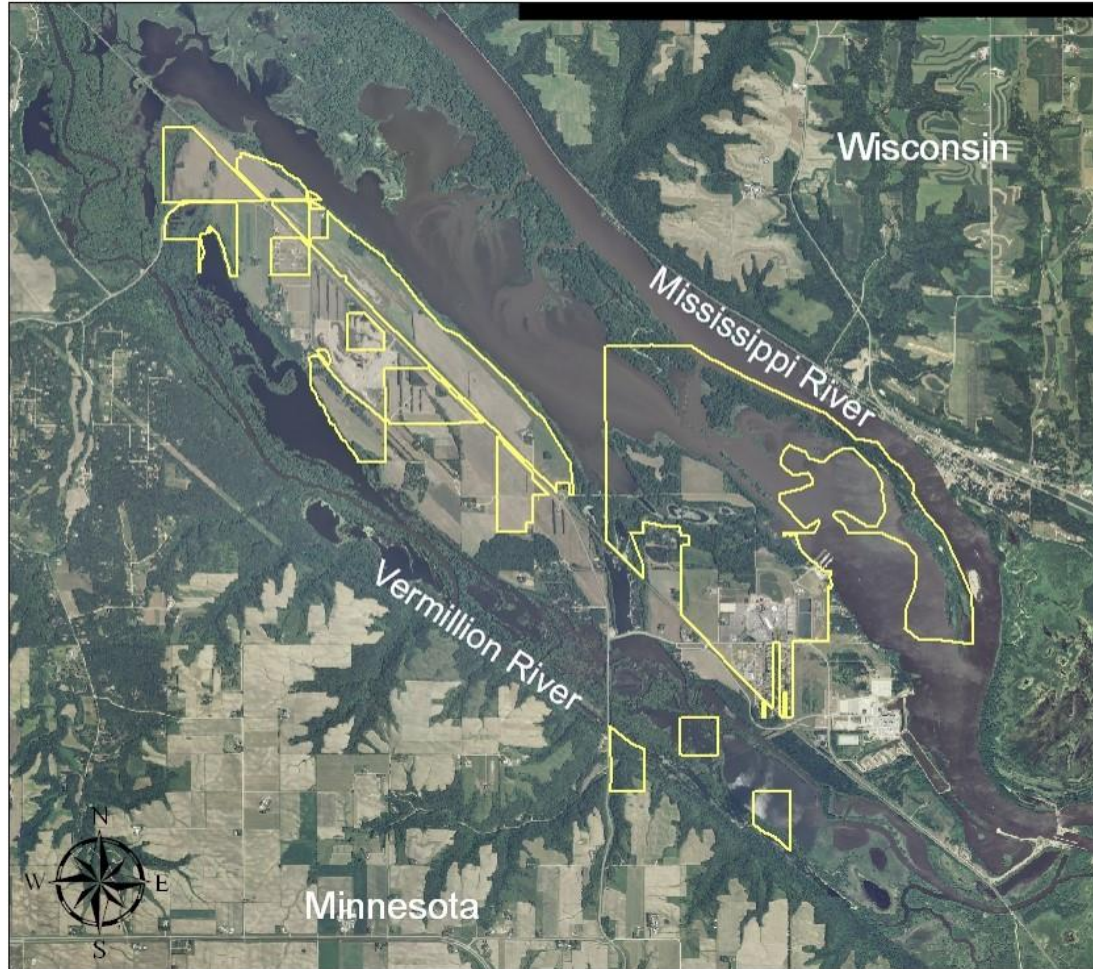
Nuclear Energy Tribal Work Group

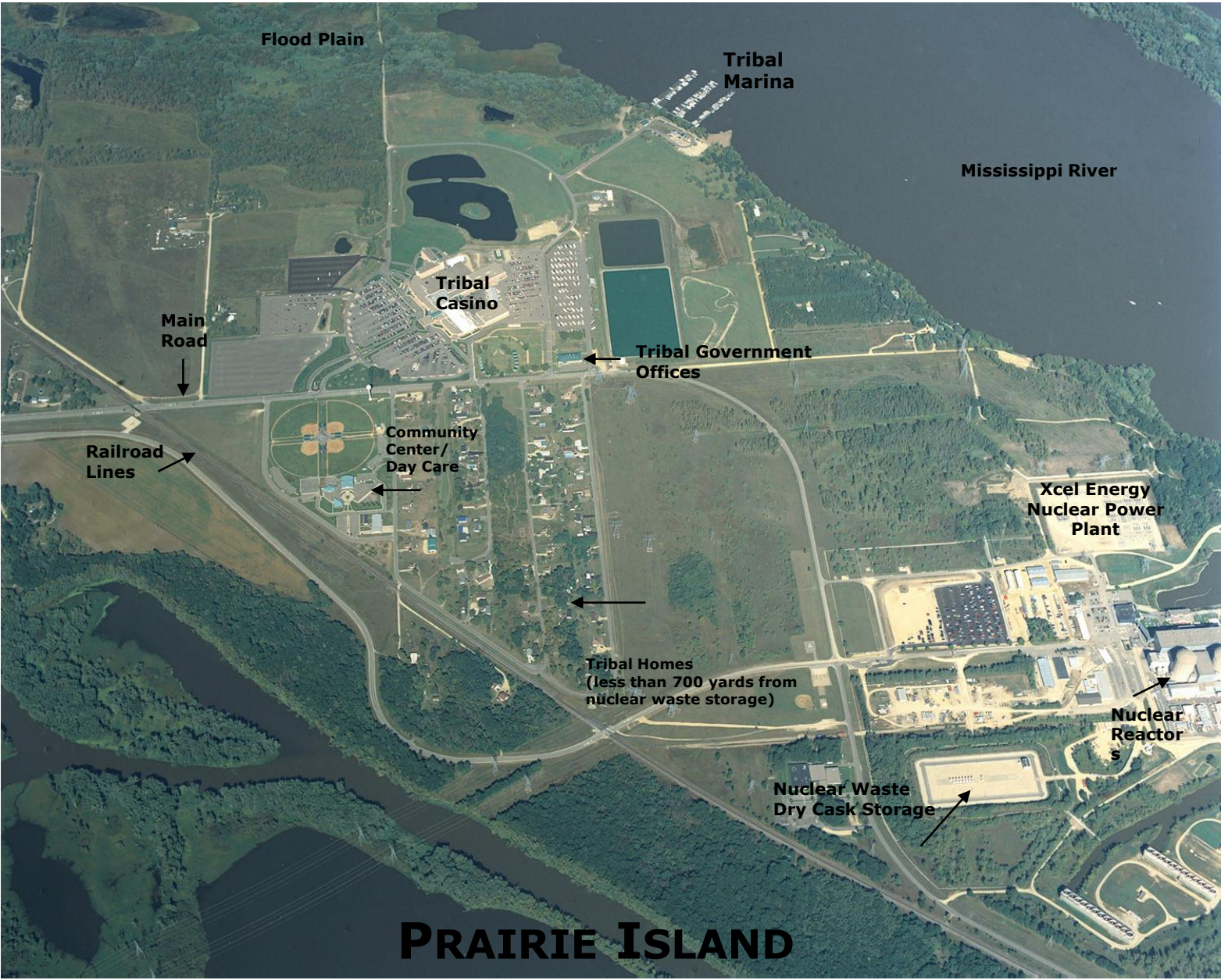
Heather Westra, Prairie Island Indian Community

Welch, Minnesota

Location

Prairie Island Indian Community





PINGP less than one mile from our Lower Island reservation area and ISFSI less than 700 yards from nearest homes



Photo By: Mark Fredrickson

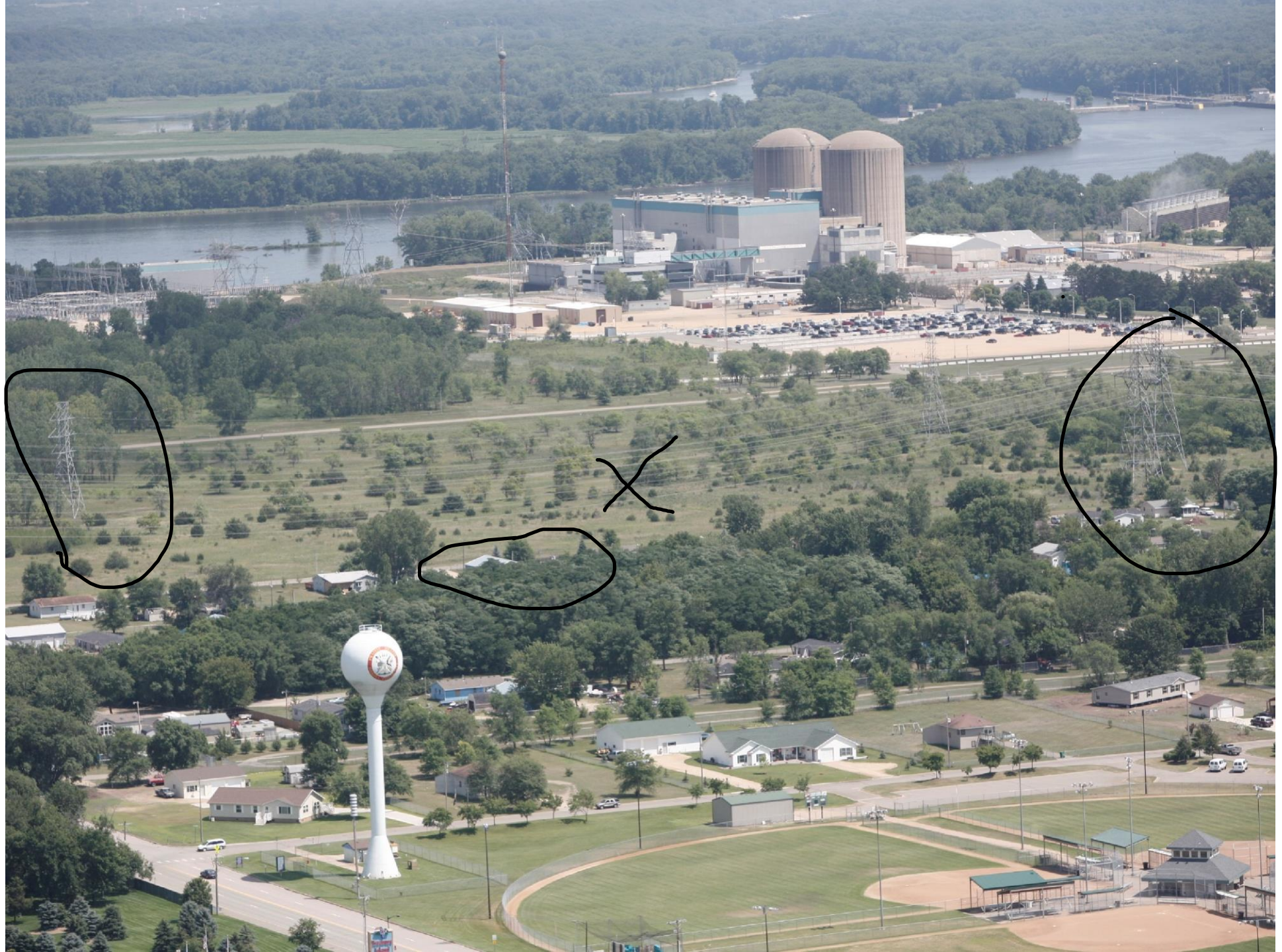


Photo By: Mark Fredrickson

Lu Taylor, Vice President of Prairie Island Tribal Council

Growing up on Prairie Island







The Nuclear Regulatory Commission and NEPA

Found at 10 Code of Federal Regulations (CFR) Part 51, Subpart A

Categorical Exclusion *10 CFR 51.22* excluded from detailed environmental review

Environmental Assessment (EA)/Finding of No Significant Impact *10 CFR 51.30*
Actions not requiring an EIS or excluded from NEPA

Environmental Impact Statement *10 CFR 51.20* licensing and regulatory actions,

Generic Environmental Reviews generic NEPA analyses that document the environmental impacts of certain regulatory and licensing activities. NRC has developed Generic environmental impact statements (GEISs for various activities such as:

Reactor License Renewal – [NUREG-1437](#)

Reactor Decommissioning – [NUREG-0586](#)

Continued Storage of Spent Nuclear Fuel – [NUREG-2157](#)

In-Situ Leach Uranium Milling – [NUREG-1910](#)

License Termination – [NUREG-1496](#)

Prairie Island's Involvement with National Environmental Policy Act

Reactor License Renewals—Environmental Impact Statement

[ML11133A029](#)

Cooperating Agency Status *40 CFR 1501.8*
Historic and Archaeological Resources
Land Use
Socioeconomics
Environmental Justice

Independent Spent Fuel Storage Installation—Environmental Assessment

[ML15098A026](#)

Cooperating Agency Status *40 CFR 1501.8*

Historic and Archaeological Resources
Land Use
Socioeconomics
Environmental Justice

Pidamaya

(Thank you)

Heather Westra (651) 329-5796

Heather.Westra@piic.org