



Oneida Nation Little Bear Development Center
Oneida, WI, June 29, 2022



Michael Troge
Project Manager



Energy Team Projects

Project #1



Energy Audits & Upgrades

- Improved lighting
- Decreased energy use



Turtle School Gym

Energy Crop Study

- Locally grown energy crop for heat, fuel
- UWGB partner

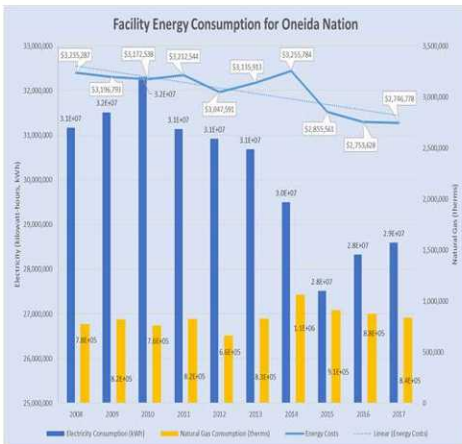


Anna John Solar

- 48 collectors, 75% of hot H2O
- 75% grant funded

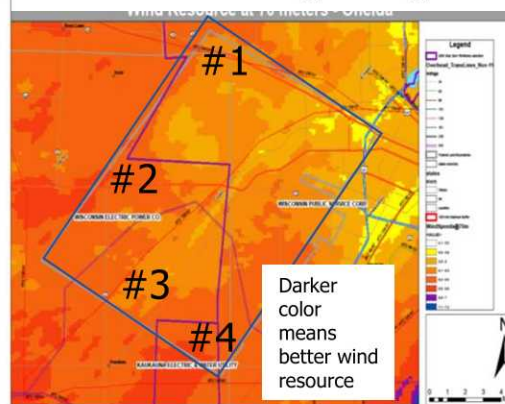


Tracking Energy



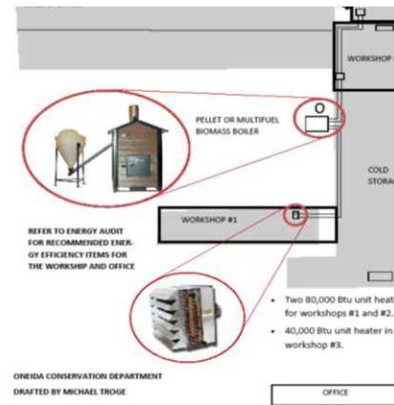
Wind Power Study

- Wind best in the west
- Part of clean energy strategy



Biomass Energy

100,000 Btu biomass boiler
Demonstration

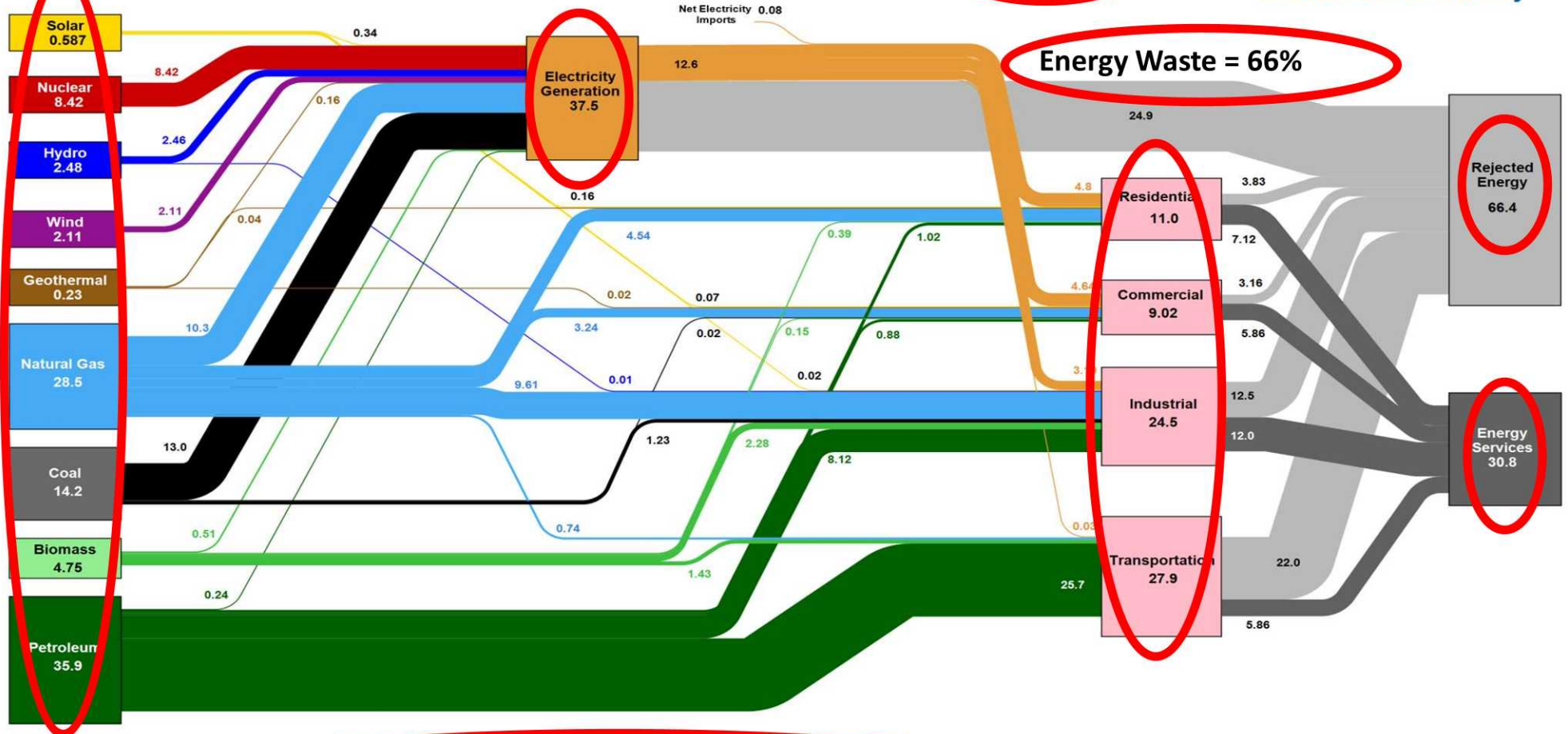


Solar Deployment Project

- DOE grant + investor support
- 800 kw on 6 buildings



Estimated U.S. Energy Consumption in 2016 **97.3 Quads**



1 QUAD is enough energy to power 32 million homes

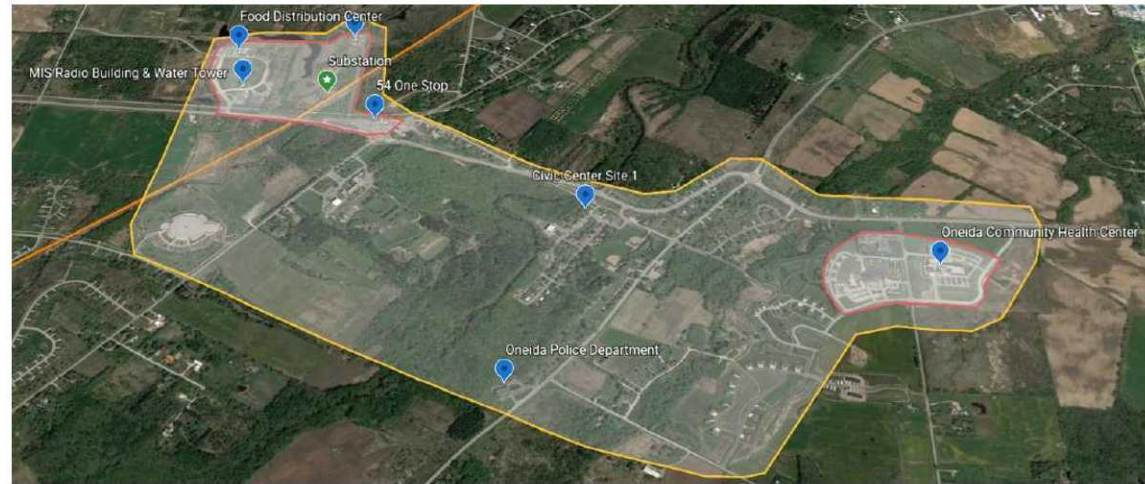
<https://flowcharts.llnl.gov> (Lawrence Livermore National Laboratory)

What does energy sovereignty mean?

- Stabilize energy costs
- Have greater control of energy imports
- Monitor & manage usage
- Strive for self-generation
- Encourage local operation & maintenance
- Economic Diversification
- Be mindful of a responsible, clean, & sustainable energy future
- Build on our emergency preparedness
- Create partnerships to expand the vision
- Embrace our role as stewards (...7 generations...)



A good mind. A good heart. A strong fire.



Energy is the Backbone to a Strong Community



Daily Life



Security and Resiliency



Economic Growth



Sustainability



Profitability



Job Creation

- The industry is going through significant change
- There is an unprecedented amount of funding for Tribal infrastructure

Source: Woven Energy

Fundamental Question

What is Oneida's strategy to ensure energy infrastructure investments are aligned with the Tribe's long-term goals?

**Current
Framework**

Federal

State

WPS

Customers

Tribe



**Tribal Utility
Framework**

FERC & MISO

Tribe

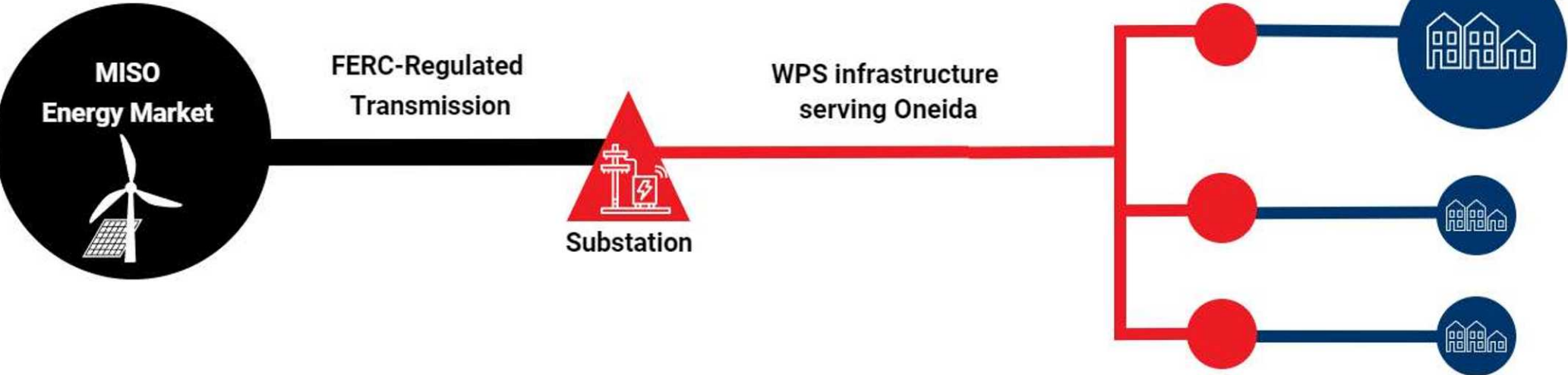
Tribal Utility

Facilities on Res

Source: Woven Energy

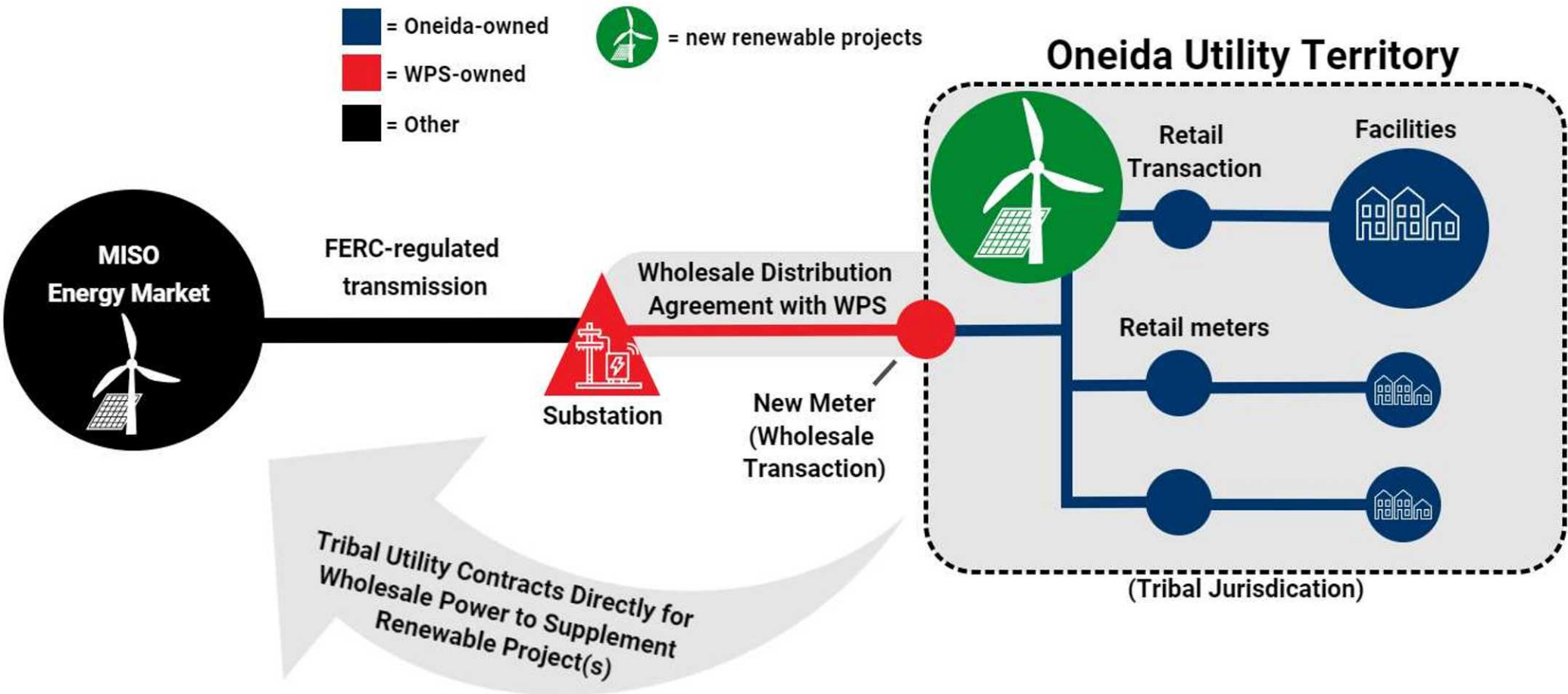
Current Situation: Retail Customer of WPS

- = facility-owned
- = WPS-owned
- = Multiple owners

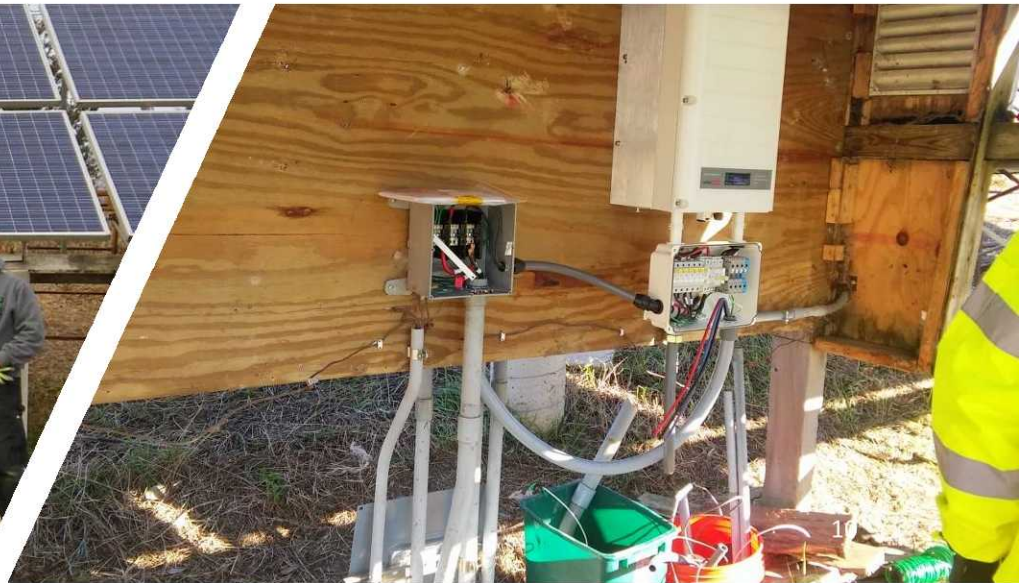


Source: Woven Energy

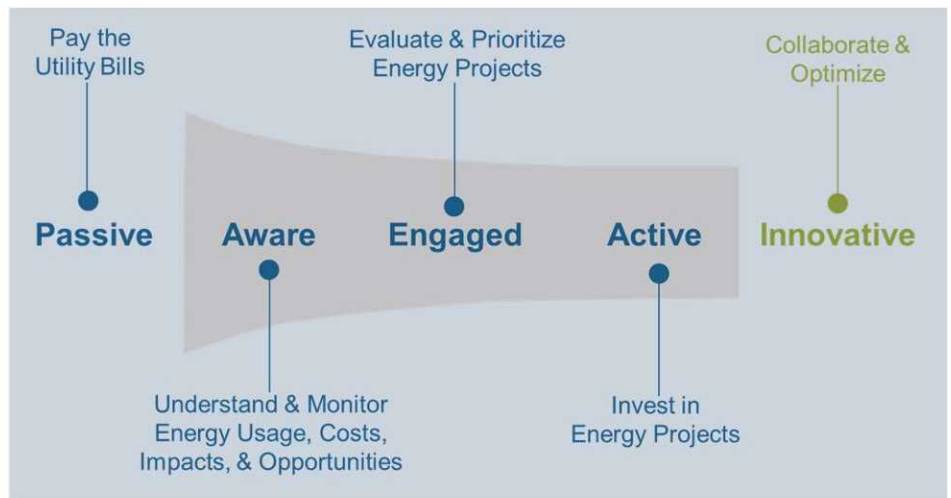
Example 3: Tribal Utility with Indirect Access to MISO



Source: Woven Energy



MTERA aims to reach out to All Midwest Tribes!



Yaw^ko!

Michael Troge
Environmental Project Manager
Oneida Nation
PO Box 365
Oneida, WI 54155
mtroge@oneidanation.org
920-869-4572

