



KENTUCKY COURT OF JUSTICE

Kentucky Court of Justice: Data tracking and it's role in the Criminal Justice System

Angela Darcy
Executive Officer, Pretrial Services
Kentucky Administrative Office of the Courts





Why monitor data?

- Shows areas of future training and improvement
 - By monitoring “errors” subsequent training opportunities can be introduced for employees
- Tracks trends
 - Example, higher volume of certain crimes could show an opportunity for a specific program to be introduced to help counter the issue
 - Racial and ethnic disparity trends
- Shows areas of data that may need to be updated or reviewed
 - Example would be higher volume of returned court notifications would lead to a clean up of non-viable numbers.
- Evolvment – could show areas of the law or programs that need to be evaluated and possibly updated

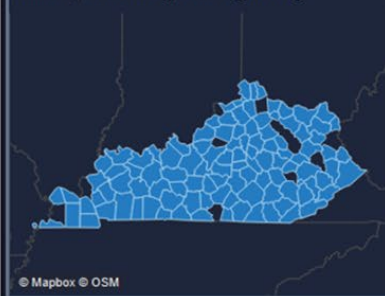


Example of Snapshot utilized by Pretrial Management

Total In Custody

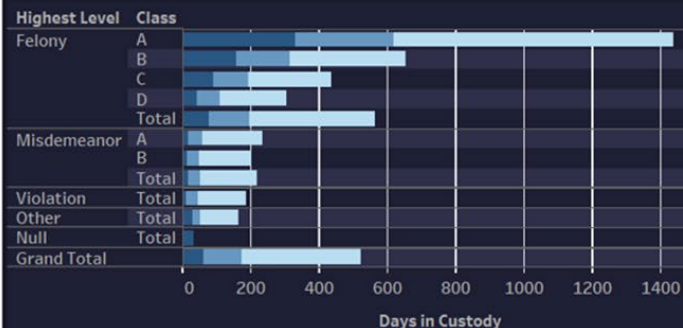
Pretrial Interviews with Defendants in Custody as of March 20, 2022

Use map to filter by holding county.



Circuit and District elements of interviews are counted separately when outcomes are different but each total only includes each interview once. The sum of subtotals may be greater than the grand total.

Days in Custody: 50th, 75th, & 90th Percentile Days in Custody



Current Holder ..	Felony						Highest Level / Class			Violation Total	Other Total	Null Total	Grand Total
	A	B	C	D	X	Total	A	B	Total				
Grand Total	818	1,832	3,240	4,453	22	9,908	1,130	566	1,694	56	534	1	11,716
Federal Inmate	5	13	28	17		61	2	4	6		5		70
State Inmate	22	88	167	256		522	67	39	106	4	16		632
Parole	5	37	85	212	4	328	37	19	56	2	5		382
Probation	12	59	188	362	1	603	98	54	152	4	35		751
County Inmate	1	3	8	13		22	5	2	7		2		29
Contempt	4	28	62	122		201	25	26	51	3	15		248
Non-Payment F..	13	60	132	323	1	501	83	42	125	6	35		626
Other	14	46	94	154	1	294	18	14	32	1	10		325
No Holder	742	1,498	2,476	2,994	15	7,376	795	366	1,159	36	411	1	8,653

Filter by Risk Level
All

Filter by Holder Reason
All

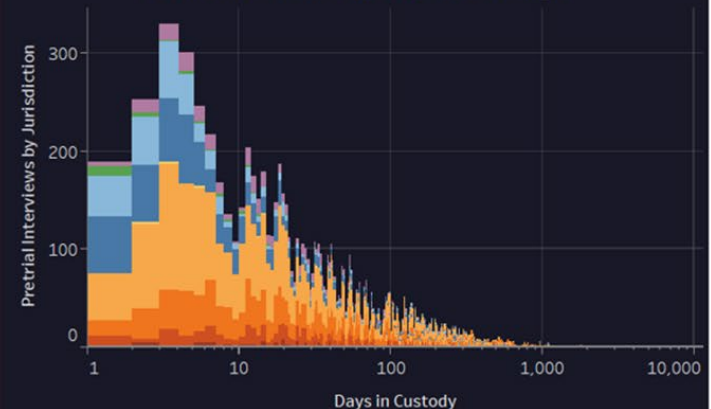
Filter by Highest Charge
All

Highest Charge

- Oth.
- Viol.
- Mis. B
- Mis. A
- Fel. Oth.
- Fel. D
- Fel. C
- Fel. B
- Fel. A
- Missing

- 50th Percentile
- 75th Percentile
- 95th Percentile

Total Interviews by Highest Charge





Example of Snapshot utilized by Pretrial Management

Daily Snapshot: 3/20/2022

Snapshot: Total Pretrial Interviews Booked
6pm March 19, 2022 - 6pm March 20, 2022

Filter by Risk Level
All

Filter by Same-Day Outcome
All

Use map to filter by holding county.



		Highest Level / Class							
Same Day Release?	Same Day Outcome	Felony				Misdemeanor		Violation	Other
		A	B	C	D	A	B		
Grand Total		3	9	23	91	92	87	15	11
In Custody (Hold)	Total		2 (22%)	3 (13%)	12 (13%)	6 (7%)	5 (6%)	1 (7%)	
In Custody (No Hold)	Total	3	7 (78%)	18 (78%)	70 (77%)	72 (78%)	49 (56%)	9 (60%)	8 (73%)
	Financial Custody	3	5 (56%)	16 (70%)	41 (45%)	43 (47%)	12 (14%)	2 (13%)	5 (45%)
	No Judicial Presentation		2 (22%)	2 (9%)	13 (14%)	15 (16%)	5 (6%)	1 (7%)	1 (9%)
	Non-Financial Custody				16 (18%)	14 (15%)	32 (37%)	6 (40%)	1 (9%)
	Release Not Offered				1 (1%)				1 (9%)
Released Same Day	Total			2 (9%)	9 (10%)	14 (15%)	33 (38%)	5 (33%)	3 (27%)
	Administrative Release				3 (3%)	5 (5%)	20 (23%)	2 (13%)	
	Financial Release			1 (4%)	4 (4%)	4 (4%)	10 (11%)	3 (20%)	3 (27%)
	Non-Financial Release			1 (4%)	2 (2%)	5 (5%)	3 (3%)		

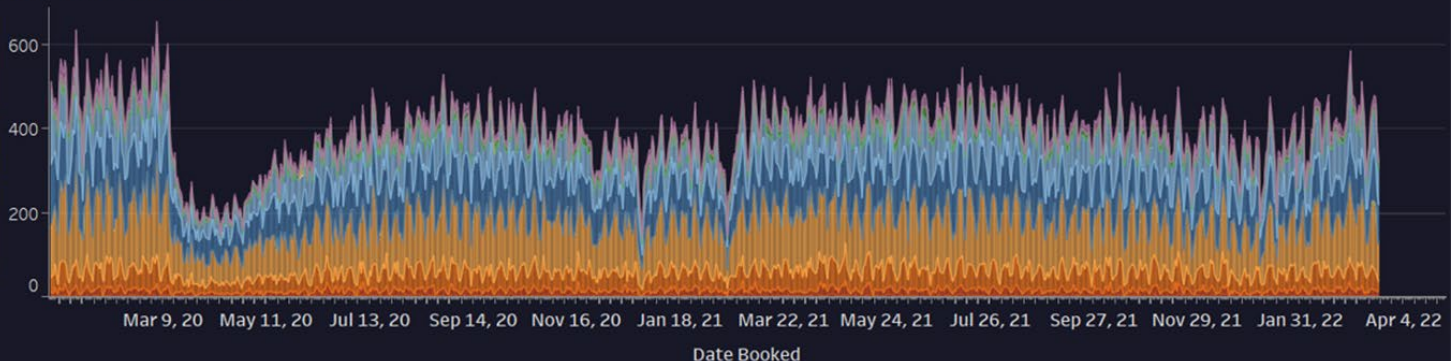
Circuit and District elements of interviews are counted separately when outcomes are different but each total only includes each interview once. The sum of subtotals may be greater than the grand total.

Interviews Booked Since 1/1/2020

Highest Charge

- Missing
- Oth.
- Viol.
- Mis. Oth.
- Mis. B
- Mis. A
- Fel. Oth.
- Fel. D
- Fel. C
- Fel. B
- Fel. A

Pretrial Interviews by Jurisdiction





KENTUCKY COURT OF JUSTICE

Example of Snapshot utilized by Pretrial Management

Daily Snapshot: 3/20/2022

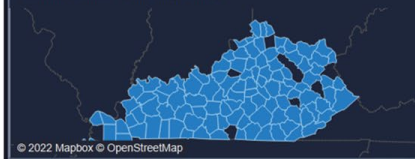
Snapshot: Total Pretrial Interviews Booked
6pm March 19, 2022 - 6pm March 20, 2022

Same Day Release?	Same Day Outcome	#	%
Grand Total		326	
In Custody (Hold)	Total	28	8.6%
	Financial Custody	123	37.7%
	No Judicial Presentation	39	12.0%
	Non-Financial Custody	69	21.2%
	Release Not Offered	2	0.6%
Released Same Day	Total	66	20.2%
	Administrative Release	30	9.2%
	Financial Release	25	7.7%
	Non-Financial Release	11	3.4%

Circuit and District elements of interviews are counted separately when outcomes are different but each total only includes each interview once. The sum of subtotals may be greater than the grand total.

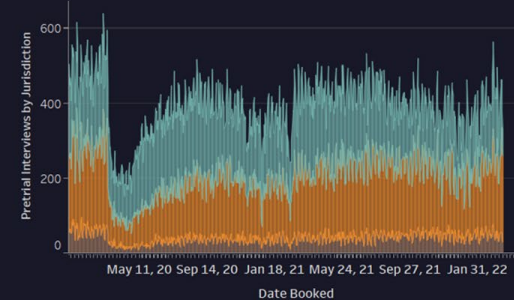
Filter by Risk Level: All
Filter by Highest Charge: All

Use map to filter by holding county.



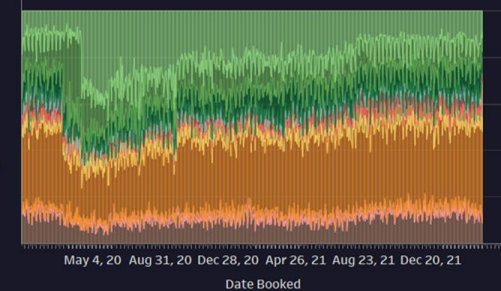
Interviews Booked Since 1/1/2020

Same Day Release?
Released Same Day
In Custody (No Hold)
In Custody (Hold)



Same-Day Outcome %

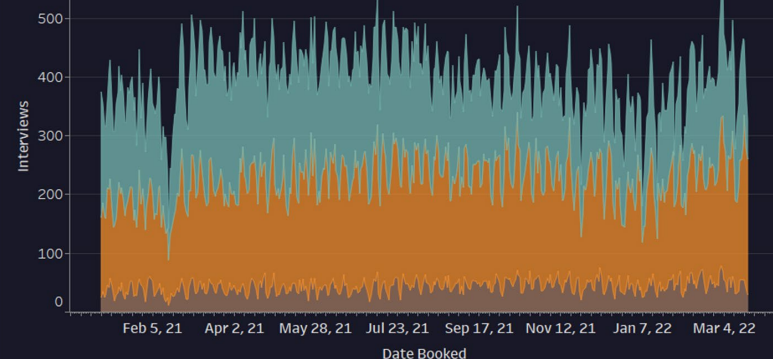
Administrative Release
Non-Financial Release
Financial Release
Disposed Same Day
Indictment
Transfer
Escape/Error
No Judicial Presentation
Non-Financial Custody
Financial Custody
Release Not Offered
In Custody (Hold)



- Upper sample - original snapshot
- Lower sample – expanded version of an area in the upper sample

Total Interviews and Same-Day Custody Status Interviews with Min. Booking Date 1/1/2021 - 3/20/2022

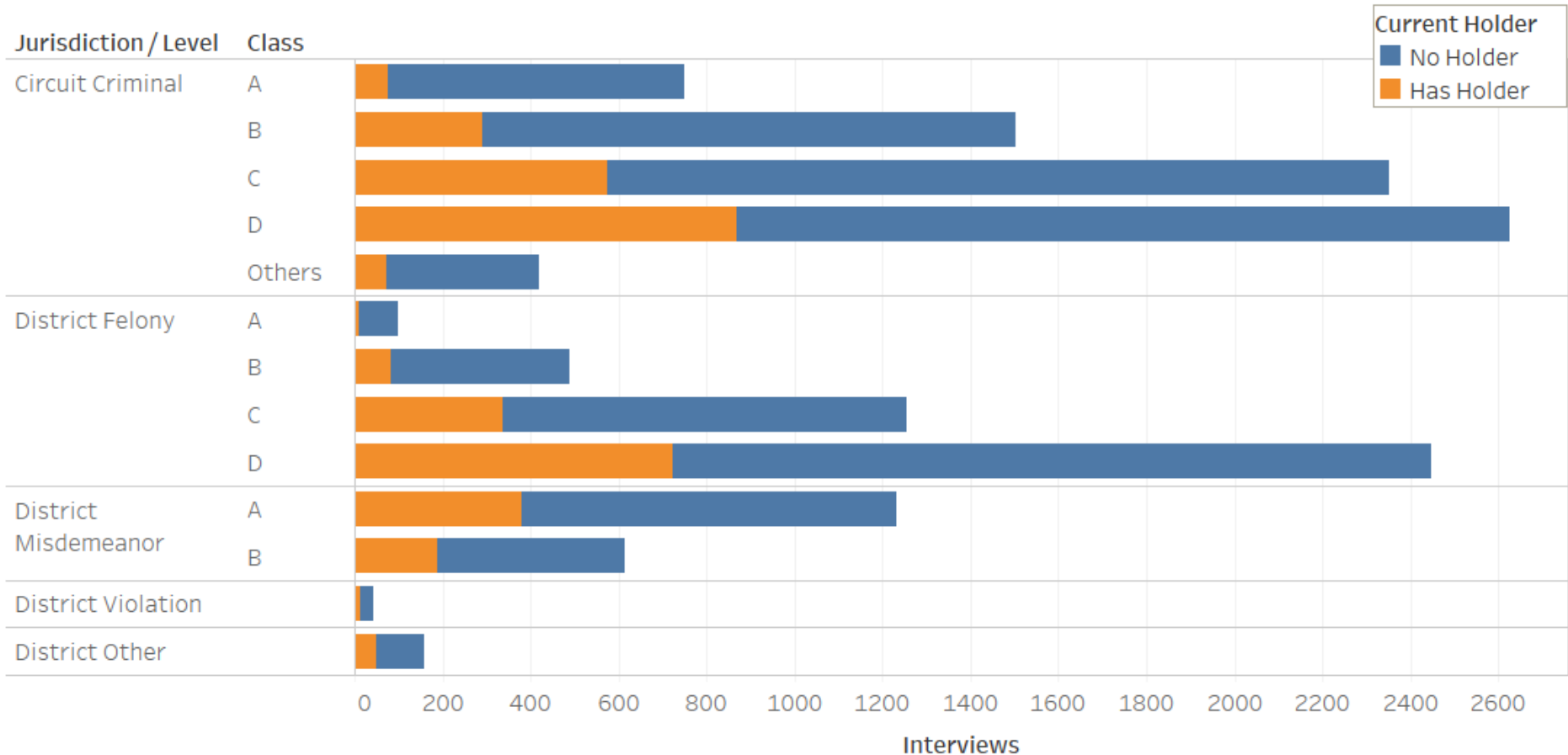
Same Day Release?
Released Same Day
In Custody (No Hold)
In Custody (Hold)





In Custody – Charge Level

Defendants in Custody 5/9/2022 by Current Holder Statewide





KENTUCKY COURT OF JUSTICE

In Custody – Charge Level

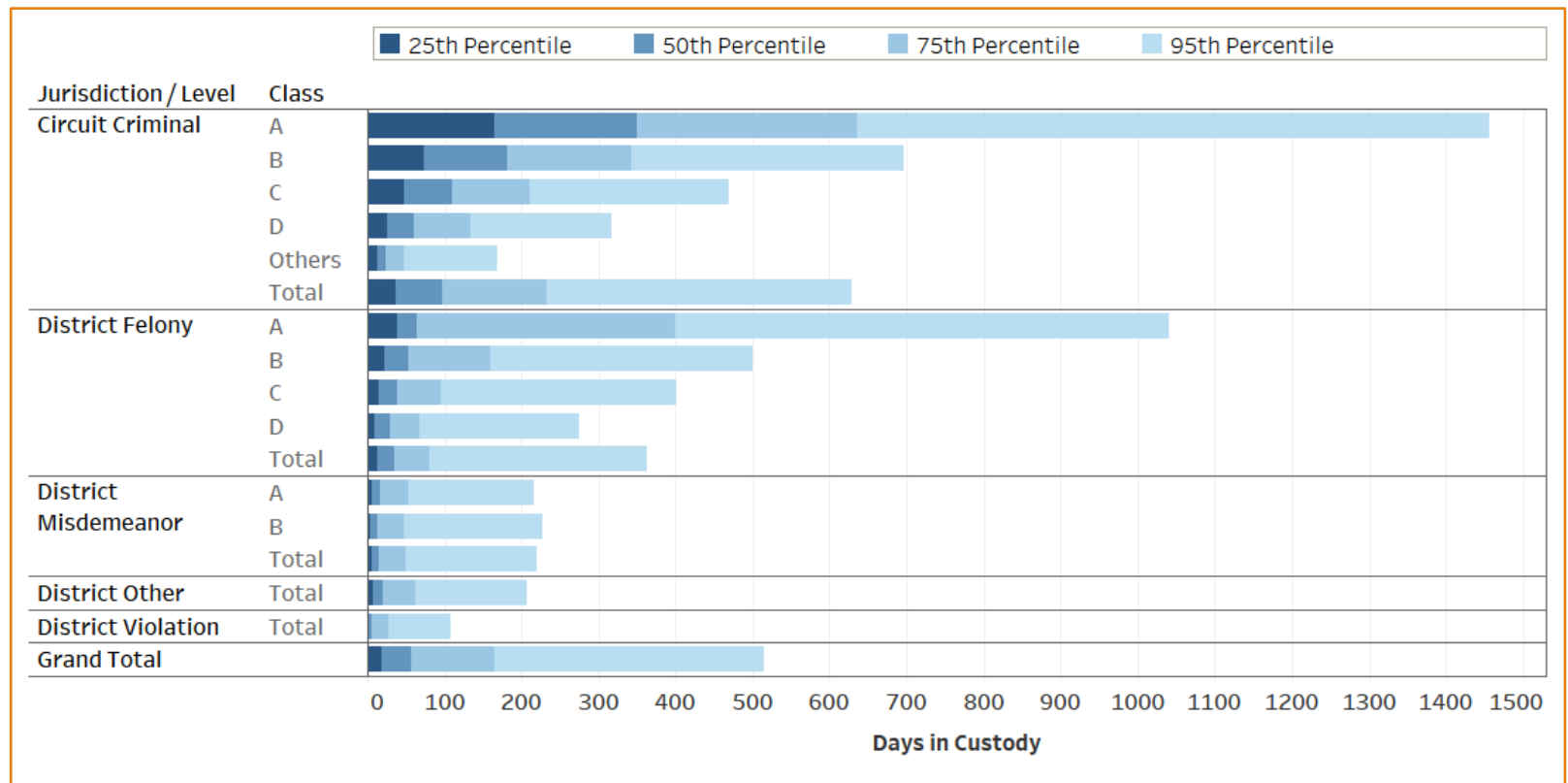
Defendants in Custody 5/9/2022 breakout by Current Holder Statewide

		No Holder	Has Holder								Total	Grand Total
		Total	Probation	Non-Payment Fines/ Restitution	State Inmate	Parole	Other	Contempt	Federal Inmate	County Inmate		
Circuit Criminal	A	676	10	14	25	5	13	5	3		75	751
	B	1,212	49	56	72	31	50	21	10	4	293	1,505
	C	1,783	138	111	120	60	77	42	19	7	574	2,357
	D	1,767	232	216	138	107	96	65	10	6	870	2,637
	Others	346	18	29	5	8	7	3	4		74	420
	Total	5,784	447	426	360	211	243	136	46	17	1,886	7,670
District Felony	A	90	2	2		1	1	1	3		10	100
	B	408	17	24	17	12	11	3			84	492
	C	928	83	70	57	44	43	27	10	5	339	1,267
	D	1,760	210	179	107	89	68	61	5	8	727	2,487
	Total	3,186	312	275	181	146	123	92	18	13	1,160	4,346
District Misdemeanor	A	902	92	99	68	36	44	36	3	5	383	1,285
	B	462	52	40	35	21	17	20	3	3	191	653
	Total	1,364	144	139	103	57	61	56	6	8	574	1,938
District Other	Total	117	11	11	11	4	5	6	1		49	166
District Violation	Total	39	2	4	2		4	2			14	53
Grand Total		9,202	802	705	607	372	371	241	63	31	3,192	12,394



Time in Custody – Charge Level

Defendants in Custody 5/9/2022 by Current Holder Statewide





Time in Custody – Charge Level

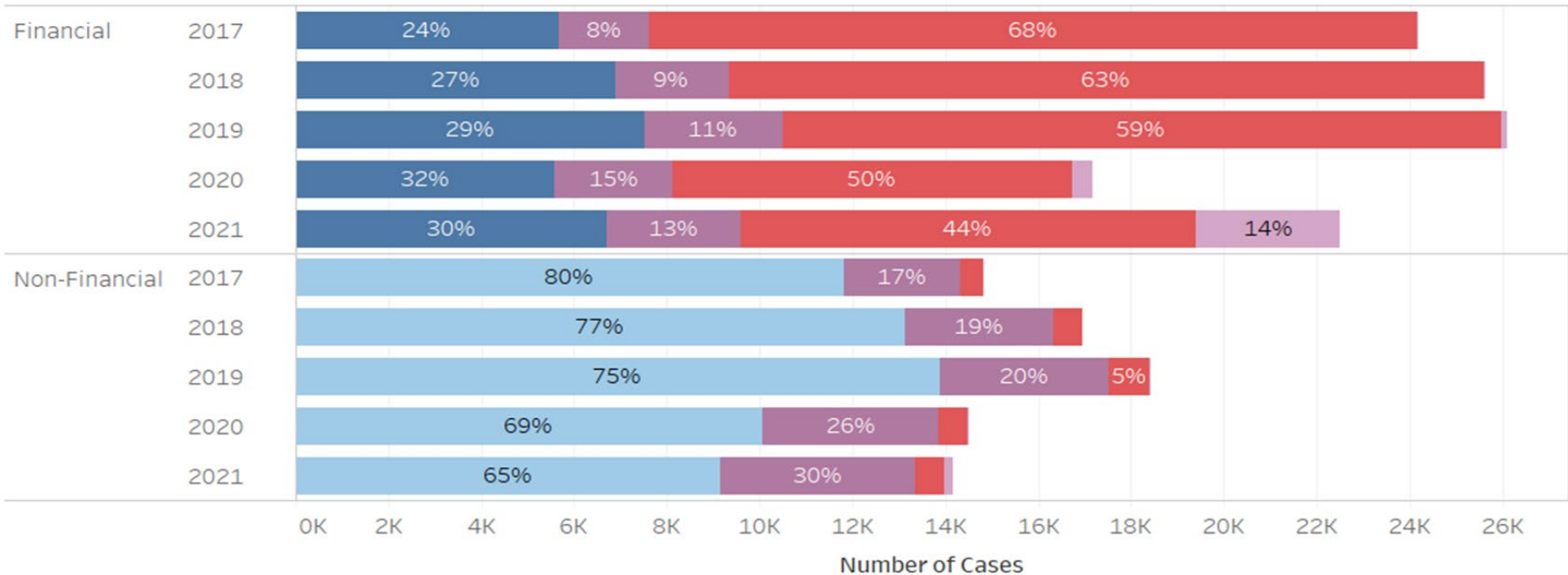
Defendants in Custody 5/9/2022

Jurisdiction / Level	Class	25th Percentile	50th Percentile	75th Percentile	95th Percentile
Circuit Criminal	A	165	350	637	1,457
	B	74	182	342	696
	C	47	110	211	470
	D	25	61	134	316
	Others	12	24	48	168
	Total	37	97	232	629
District Felony	A	39	64	400	1,040
	B	22	53	159	501
	C	14	38	95	401
	D	10	29	67	275
	Total	13	34	81	364
District Misdemeanor	A	6	17	53	217
	B	4	13	47	228
	Total	5	15	50	220
District Other	Total	7	21	62	207
District Violation	Total	2	6	27	109
Grand Total		18	56	165	515



KENTUCKY COURT OF JUSTICE

Circuit Court Pretrial Interviews with Custody Ending CY 2017 – 2021 Statewide Number of Cases and Release Outcomes for Financial and Non-Financial Bonds



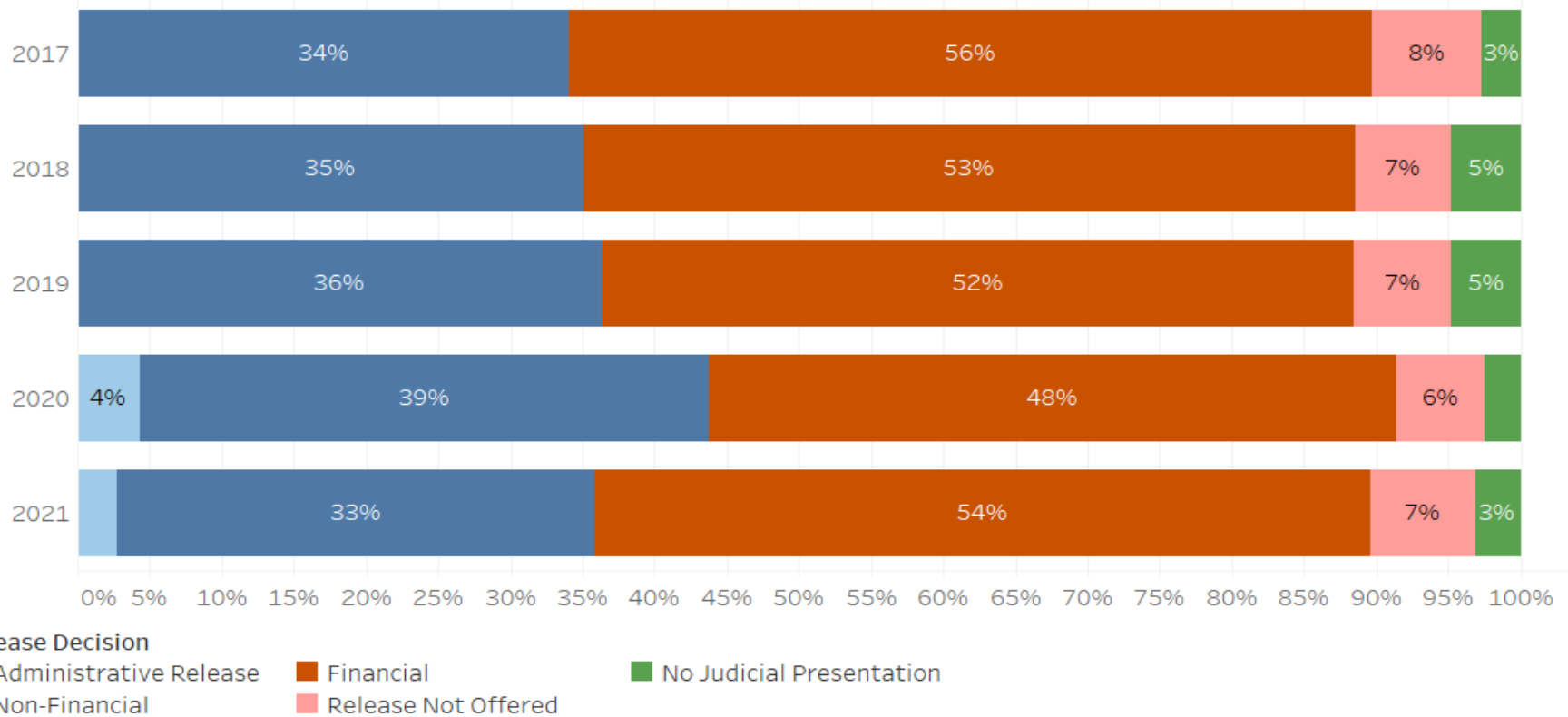
Release Outcome

- Non-Financial Release
- Financial Release
- Indictment Summons
- Detained Until Disposition
- In Custody



Percentage of Release Types - Circuit

Circuit Court Pretrial Interviews with Custody Ending CY 2017 – 2021 Statewide
Release Decision Percentage by Year of Case Booking Date





KENTUCKY COURT OF JUSTICE

Amount of each Release Type per year - Circuit

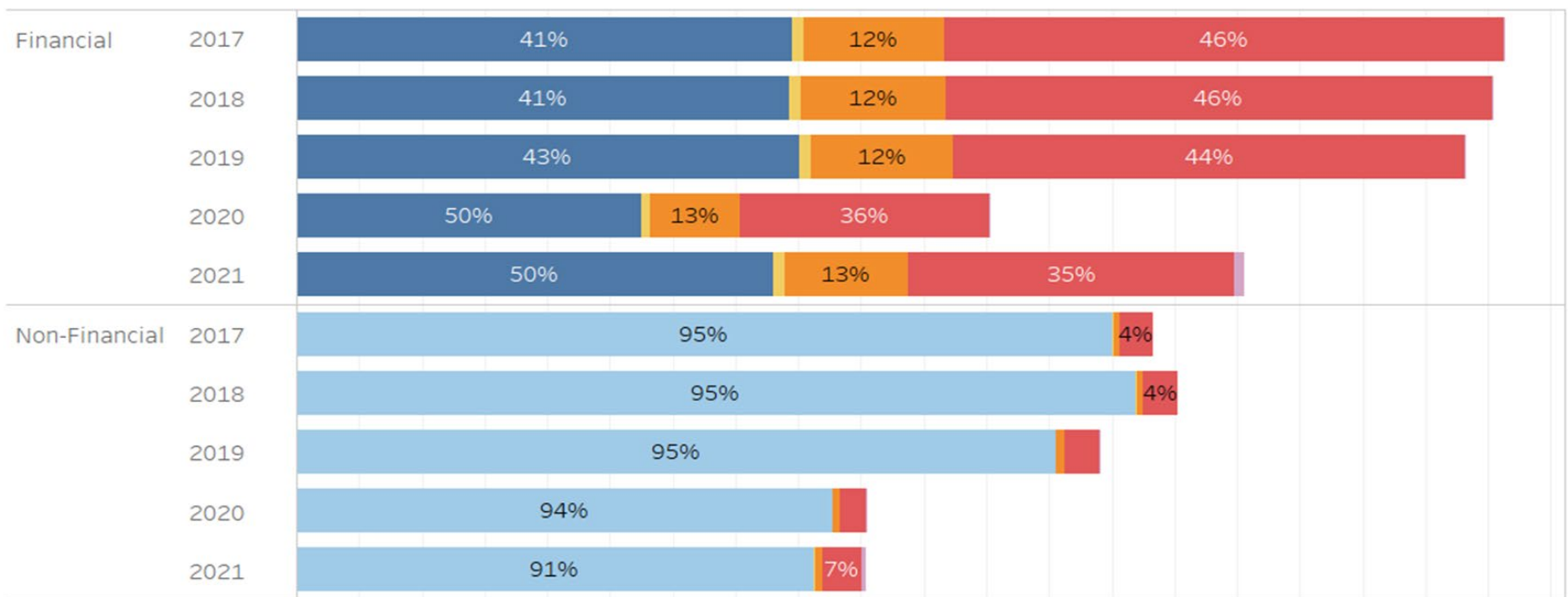
Circuit Court Pretrial Interviews with Custody Ending CY 2017 – 2021 Statewide
Release Decision and Release Outcome by Year of Case Booking Date

Year of Date Booked	Release Outcome	Release Not Offered	Financial	Non-Financial	Administrative Release	No Judicial Presentation	Grand Total
2017	Administrative Release				31		31
	Non-Financial Release			11,821			11,821
	Financial Release		5,685				5,685
	Indictment Summons		1,931	2,512	2		4,445
	Detained Until Disposition	3,279	16,536	492		1,179	21,486
	In Custody	3	21				24
	Total	3,282	24,173	14,825	33	1,179	43,492
2018	Administrative Release				23		23
	Non-Financial Release			13,130			13,130
	Financial Release		6,908				6,908
	Indictment Summons		2,420	3,214	1		5,635
	Detained Until Disposition	3,181	16,273	618		2,322	22,394
	In Custody	3	45			1	49
	Total	3,184	25,646	16,962	24	2,323	48,139
2019	Administrative Release				22		22
	Non-Financial Release			13,890			13,890
	Financial Release		7,537				7,537
	Indictment Summons		2,977	3,642			6,619
	Detained Until Disposition	3,354	15,467	864	4	2,412	22,101
	In Custody	8	137	4			149
	Total	3,362	26,118	18,400	26	2,412	50,318
2020	Administrative Release				1,345		1,345
	Non-Financial Release			10,055			10,055
	Financial Release		5,571				5,571
	Indictment Summons		2,555	3,811	3		6,369
	Detained Until Disposition	2,142	8,618	605	226	871	12,462
	In Custody	30	445	11	6	1	493
	Total	2,172	17,189	14,482	1,580	872	36,295
2021	Administrative Release				1,028		1,028
	Non-Financial Release			9,147			9,147
	Financial Release		6,714				6,714
	Indictment Summons		2,874	4,196	4		7,074
	Detained Until Disposition	2,783	9,802	642	129	1,136	14,492
	In Custody	244	3,121	181	9	129	3,684
	Total	3,027	22,511	14,166	1,170	1,265	42,139



KENTUCKY COURT OF JUSTICE

District Court Pretrial Interviews with Custody Ending CY 2017 – 2021 Statewide Number of Cases and Release Outcomes for Financial and Non-Financial Bonds



Release Outcome

Non-Financial Release

Financial Release

60-Day Rule

Indictment

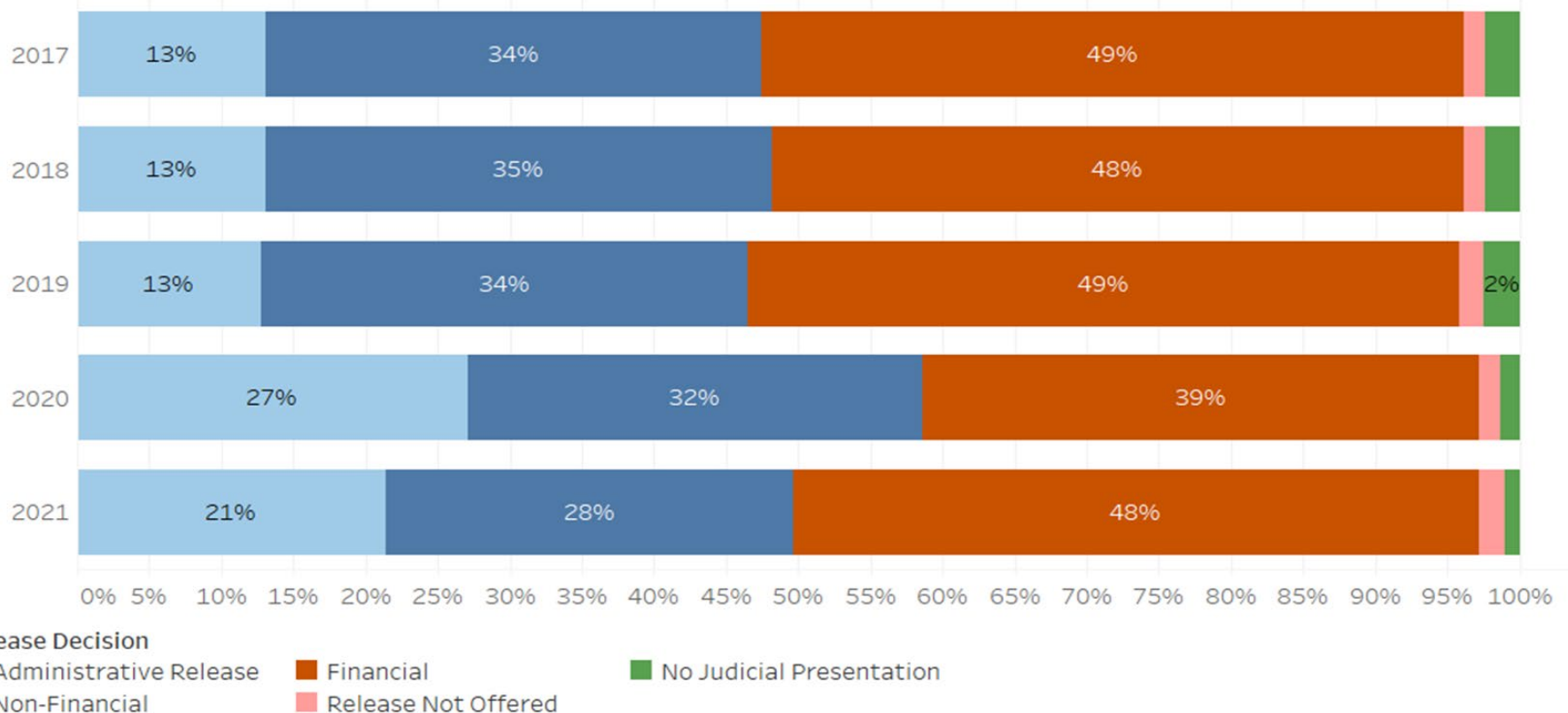
Detained Until Disposition

In Custody



Percentage of Release Types – District

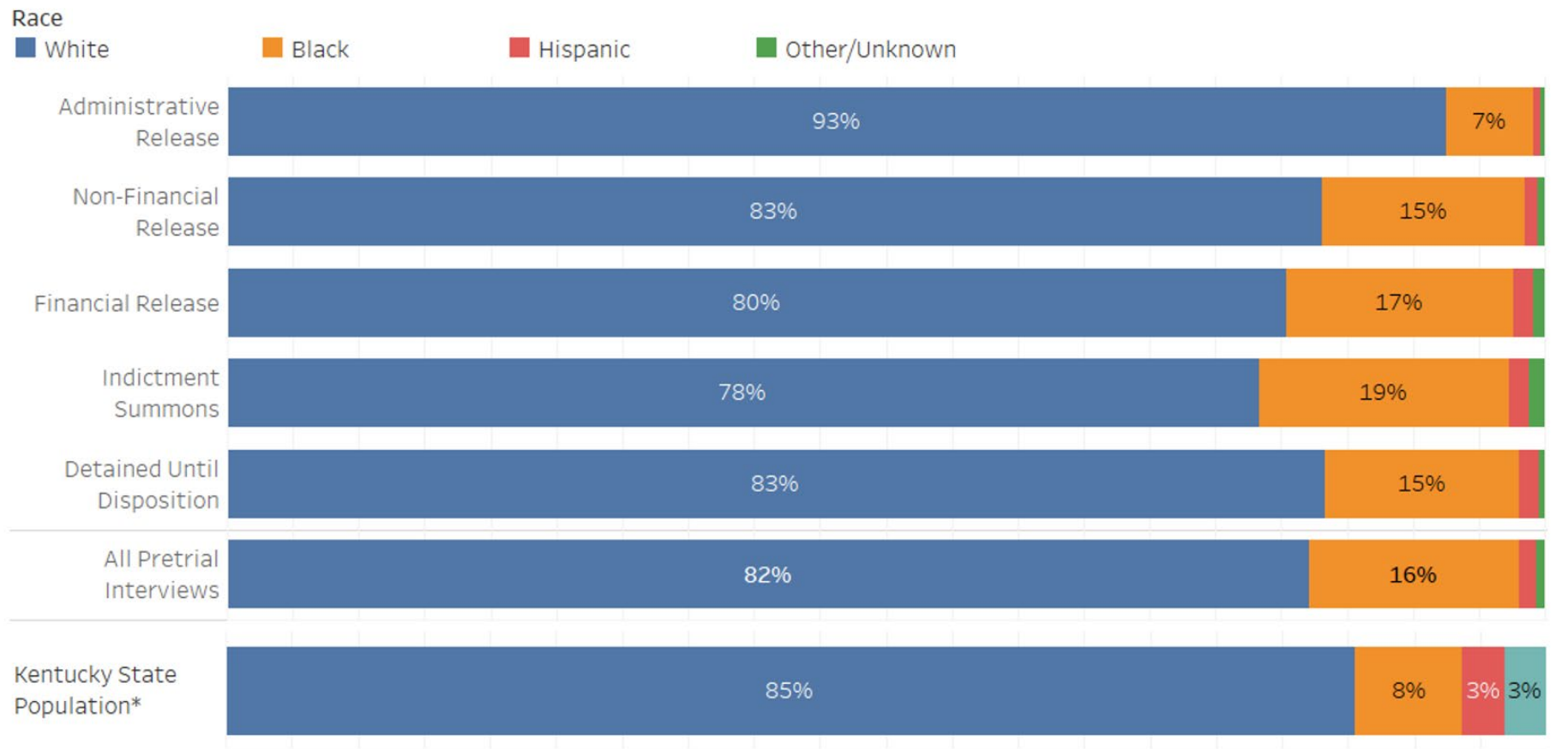
District Court Pretrial Interviews with Custody Ending CY 2017 – 2021 Statewide
Release Decision Percentage by Year of Case Booking Date





Defendant Race Proportions by Release Outcome

Circuit Court Pretrial Interviews with Custody Ending CY 2017 – 2021 Statewide





**Circuit Court Pretrial Interviews with Custody Ending CY 2017 – 2021 Statewide
Release Decision and Release Outcome by Year of Case Booking Date**



Breakdown – Defendant Race Proportions by Release Outcomes

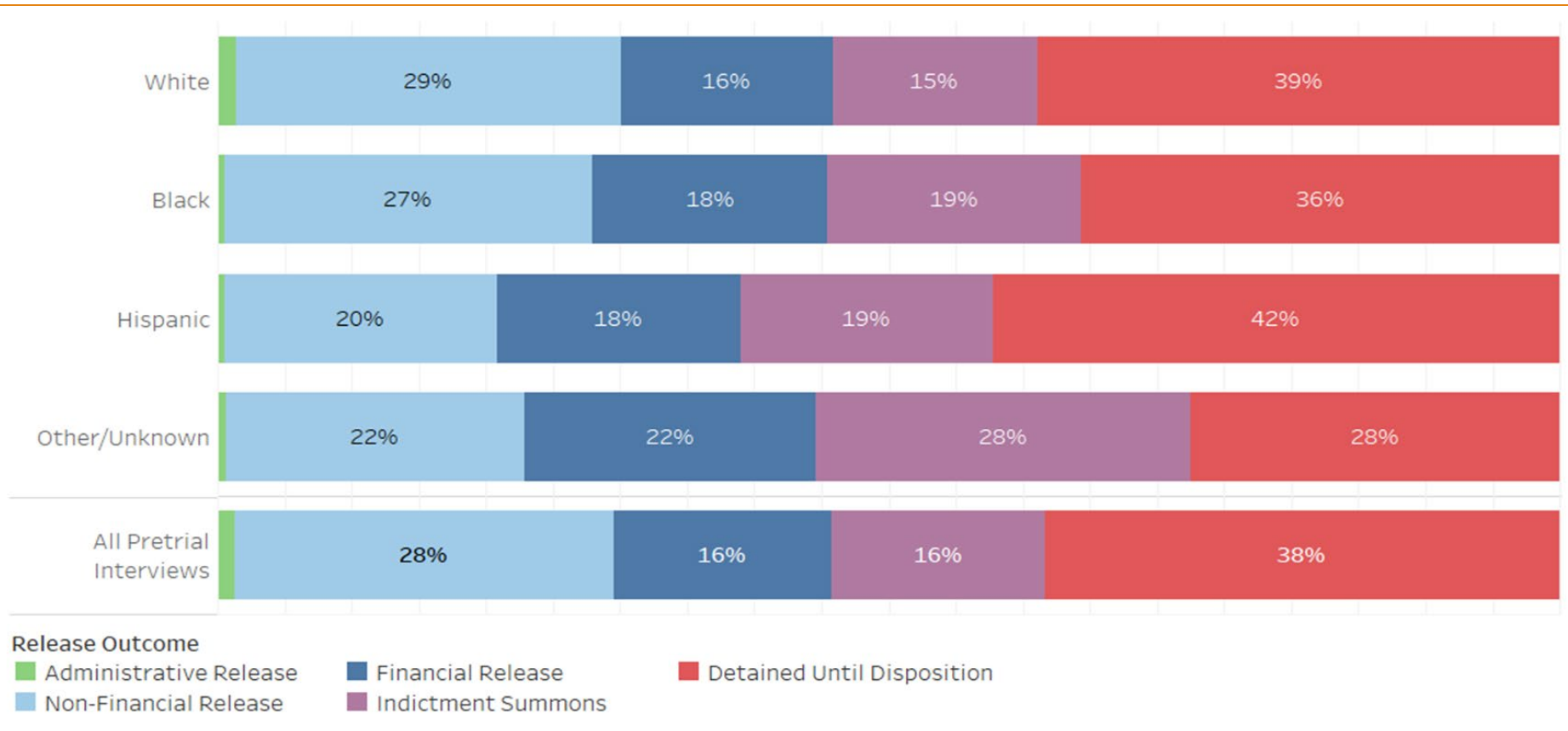
Circuit Court Pretrial Interviews with Custody Ending CY 2017 – 2021 Statewide

		White	Black	Hispanic	Other/Unknown	Grand Total
Administrative Release	Interviews	2,043	145	13	7	2,208
	% of Interviews	93%	7%	1%	0%	100%
Non-Financial Release	Interviews	41,255	7,638	476	257	49,626
	% of Interviews	83%	15%	1%	1%	100%
Financial Release	Interviews	22,815	4,907	427	251	28,400
	% of Interviews	80%	17%	2%	1%	100%
Indictment Summons	Interviews	21,885	5,276	441	323	27,925
	% of Interviews	78%	19%	2%	1%	100%
Detained Until Disposition	Interviews	56,110	9,957	993	318	67,378
	% of Interviews	83%	15%	1%	0%	100%
All Pretrial Interviews	Interviews	144,108	27,923	2,350	1,156	175,537
	% of Interviews	82%	16%	1%	1%	100%
Kentucky State Population*		White	Black	Hispanic	Other/Unknown	Total
		3,112,654	297,705	118,427	112,664	3,641,450



Release Outcome Proportions by Defendant Race

Circuit Court Pretrial Interviews with Custody Ending CY 2017 – 2021 Statewide





Breakdown - Release Outcome Proportions by Defendant Race

Circuit Court Pretrial Interviews with Custody Ending CY 2017 – 2021 Statewide

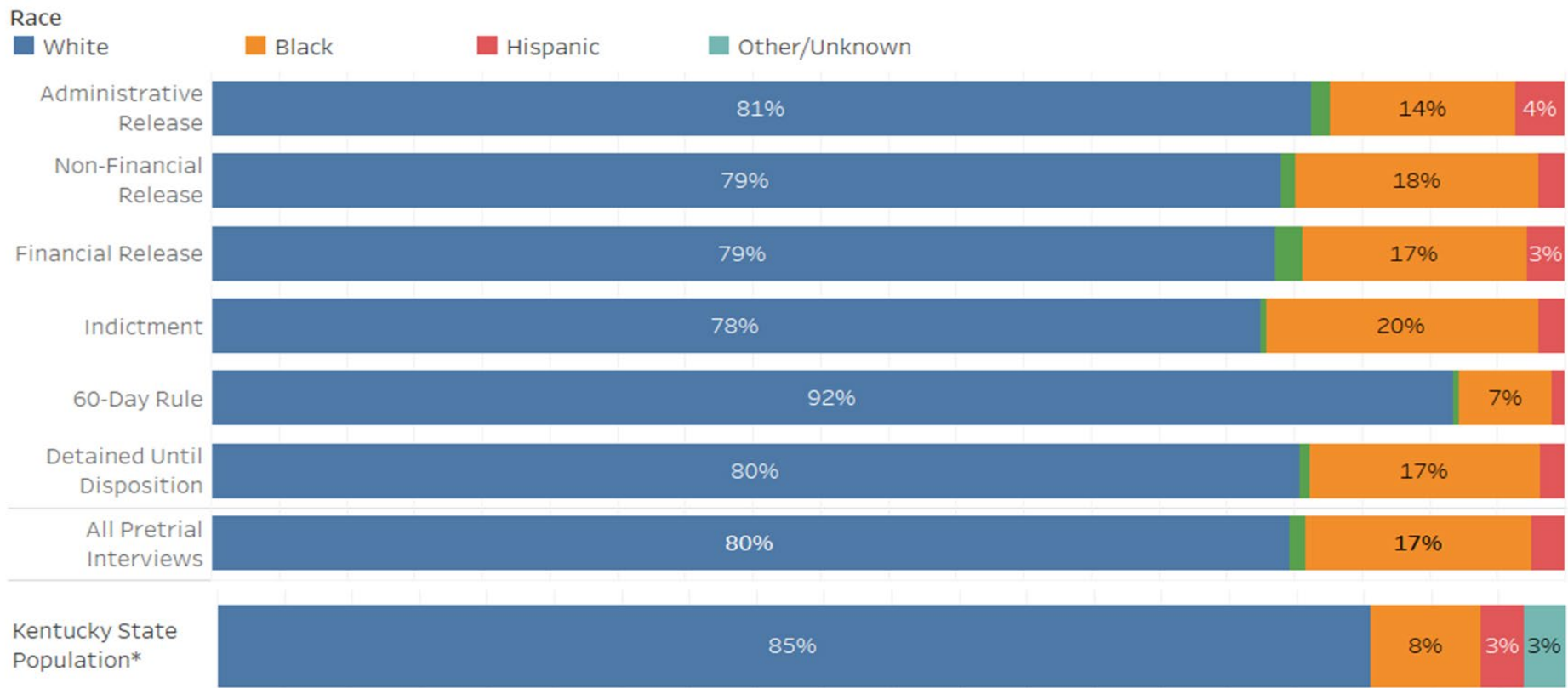
		Administrative Release	Financial Release	Non-Financial Release	Indictment Summons	Detained Until Disposition	All Pretrial Interviews
White	Interviews	2,043	22,815	41,255	21,885	56,110	144,108
	% of Interviews	1%	16%	29%	15%	39%	100%
Black	Interviews	145	4,907	7,638	5,276	9,957	27,923
	% of Interviews	1%	18%	27%	19%	36%	100%
Hispanic	Interviews	13	427	476	441	993	2,350
	% of Interviews	1%	18%	20%	19%	42%	100%
Other/Unknown	Interviews	7	251	257	323	318	1,156
	% of Interviews	1%	22%	22%	28%	28%	100%
All Pretrial Interviews	Interviews	2,208	28,400	49,626	27,925	67,378	175,537
	% of Interviews	1%	16%	28%	16%	38%	100%



KENTUCKY COURT OF JUSTICE

Defendant Race Proportions by Release Outcomes

District Court Pretrial Interviews with Custody Ending CY 2017 – 2021 Statewide





KENTUCKY COURT OF JUSTICE

Release Outcome Proportions by Defendant Race

District Court Pretrial Interviews with Custody Ending CY 2017 – 2021 Statewide





Breakdown – Release Outcome Proportions by Defendant Race

District Court Pretrial Interviews with Custody Ending CY 2017 – 2021 Statewide

		Administrative Release	Non-Financial Release	Financial Release	60-Day Rule	Indictment	Detained Until Disposition	All Pretrial Interviews
White	Interviews	108,265	176,452	122,349	3,467	28,322	116,124	554,979
	% of Interviews	20%	32%	22%	1%	5%	21%	100%
Black	Interviews	18,232	40,056	25,746	259	7,323	24,548	116,164
	% of Interviews	16%	34%	22%	0%	6%	21%	100%
Hispanic	Interviews	4,901	4,405	4,330	37	715	2,596	16,984
	% of Interviews	29%	26%	25%	0%	4%	15%	100%
Other / Unknown	Interviews	1,890	2,500	3,136	15	182	1,084	8,807
	% of Interviews	21%	28%	36%	0%	2%	12%	100%
All Pretrial Interviews	Interviews	133,288	223,413	155,561	3,778	36,542	144,352	696,934
	% of Interviews	19%	32%	22%	1%	5%	21%	100%



Breakdown - Defendant Race Proportions by Release Outcomes

District Court Pretrial Interviews with Custody Ending CY 2017 – 2021 Statewide

		White	Black	Hispanic	Other / Unknown	Grand Total
Administrative Release	Interviews	108,265	18,232	4,901	1,890	133,288
	% of Interviews	81%	14%	4%	1%	100%
Non-Financial Release	Interviews	176,452	40,056	4,405	2,500	223,413
	% of Interviews	79%	18%	2%	1%	100%
Financial Release	Interviews	122,349	25,746	4,330	3,136	155,561
	% of Interviews	79%	17%	3%	2%	100%
60-Day Rule	Interviews	3,467	259	37	15	3,778
	% of Interviews	92%	7%	1%	0%	100%
Indictment	Interviews	28,322	7,323	715	182	36,542
	% of Interviews	78%	20%	2%	0%	100%
Detained Until Disposition	Interviews	116,124	24,548	2,596	1,084	144,352
	% of Interviews	80%	17%	2%	1%	100%
All Pretrial Interviews	Interviews	554,979	116,164	16,984	8,807	696,934
	% of Interviews	80%	17%	2%	1%	100%
Kentucky State Population*		White	Black	Hispanic	Other/Unknown	Total
		3,112,654	297,705	118,427	112,664	3,641,450



KENTUCKY COURT OF JUSTICE

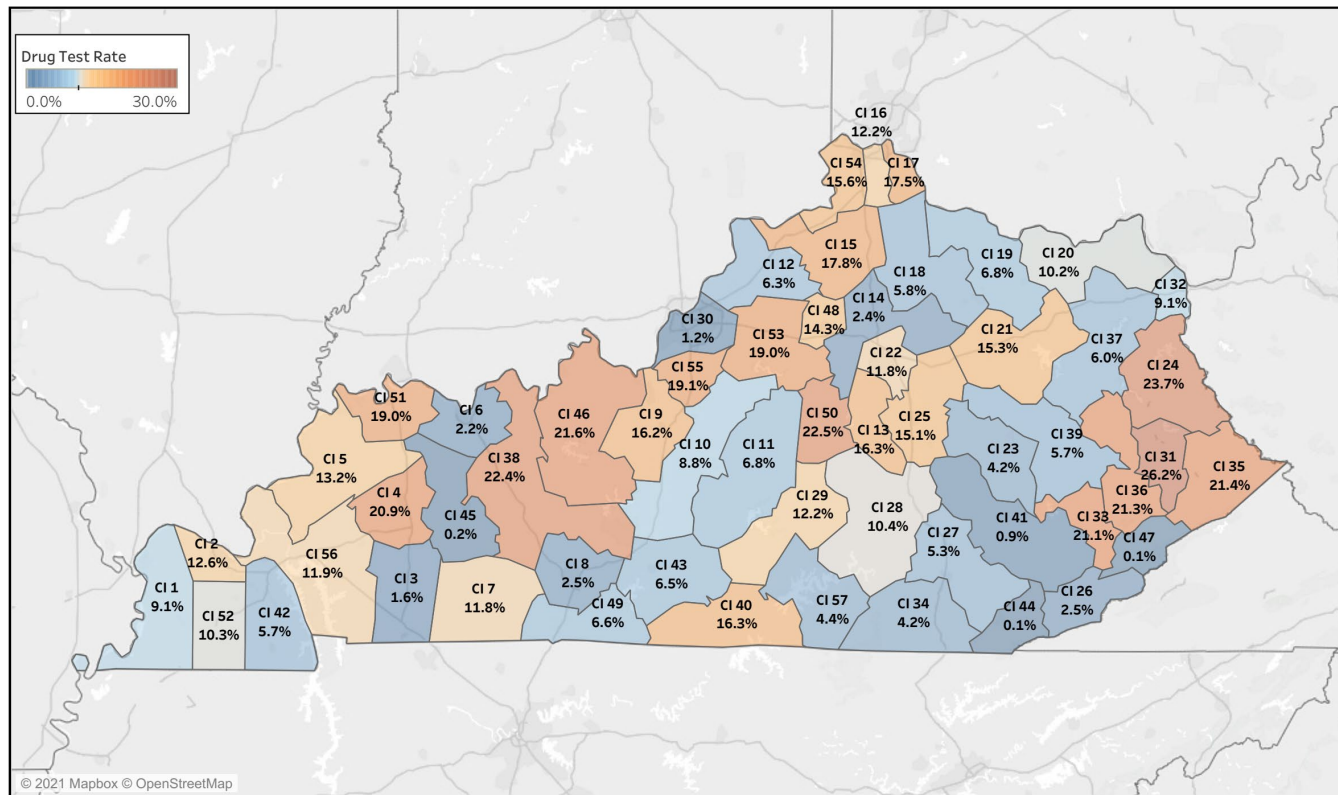


ADMINISTRATIVE OFFICE OF THE COURTS Research and Statistics

21_PINS8001

Pretrial Cases Booked CY 2017-2019 Statewide

Percentage of Circuit Criminal Pretrial Bookings including at least one Drug Test MCR Event per Judicial Circuit



* Data provided from the Pretrial Information Management System.

* Counts and percentages are of distinct cases booked. A single defendant may have multiple pretrial interviews / cases during any given period of time.

Run Date:
1/19/2021
Page 1 of 12



KENTUCKY COURT OF JUSTICE

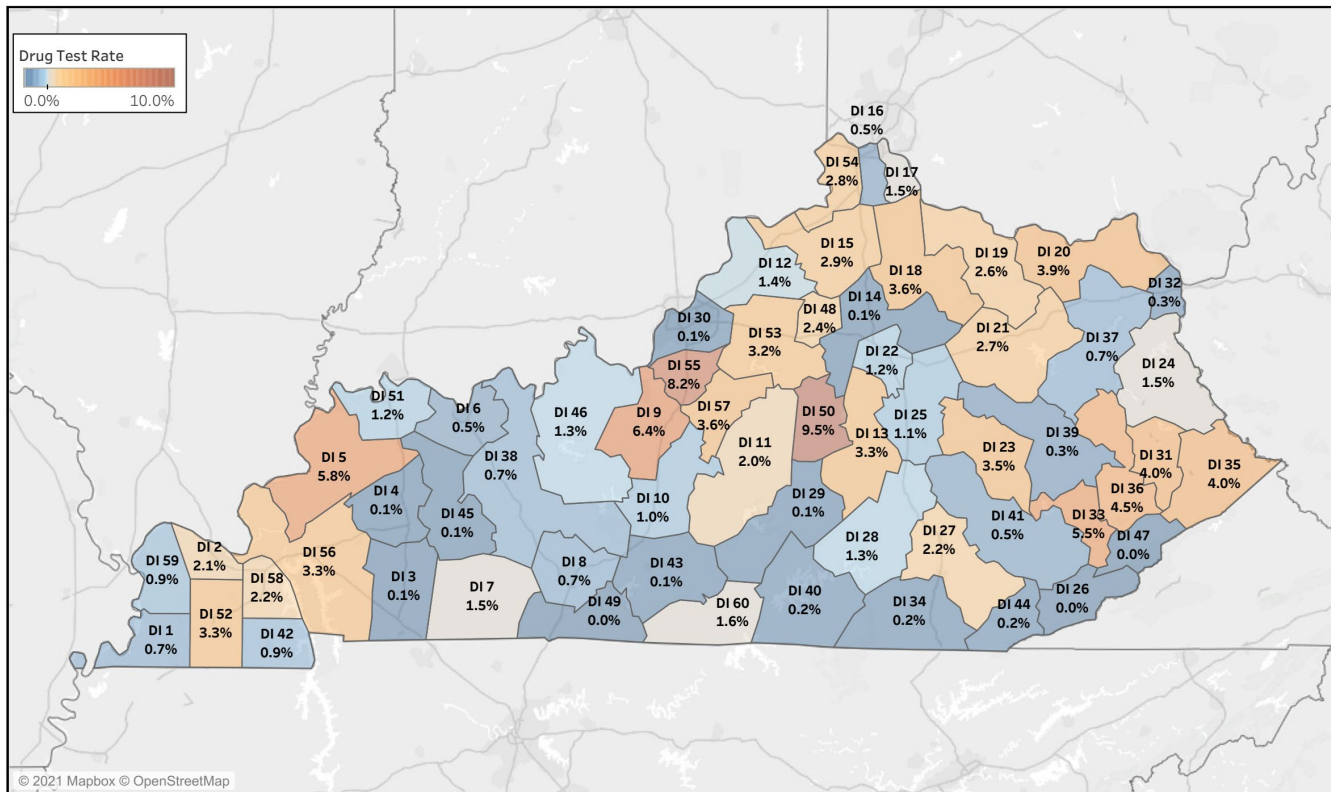


ADMINISTRATIVE OFFICE OF THE COURTS Research and Statistics

21_PINS8001

Pretrial Cases Booked CY 2017-2019 Statewide

Percentage of District Criminal Pretrial Bookings including at least one Drug Test MCR Event per Judicial District



* Data provided from the Pretrial Information Management System.

* Counts and percentages are of distinct cases booked. A single defendant may have multiple pretrial interviews / cases during any given period of time.

Run Date:
1/19/2021
Page 2 of 12



KENTUCKY COURT OF JUSTICE



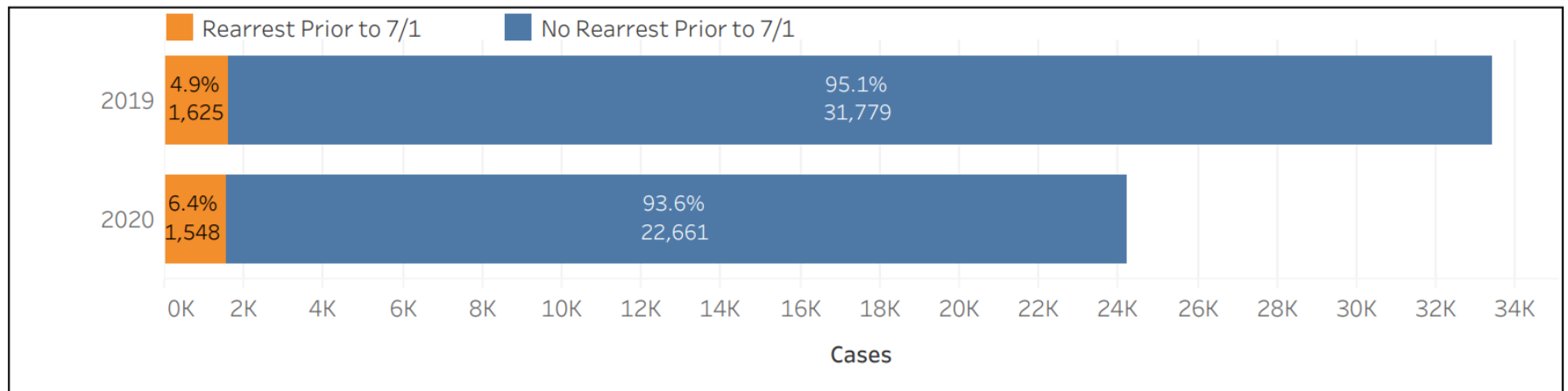
ADMINISTRATIVE OFFICE OF THE COURTS Research and Statistics

20_PINS8009

Rearrest Prior to July 1st

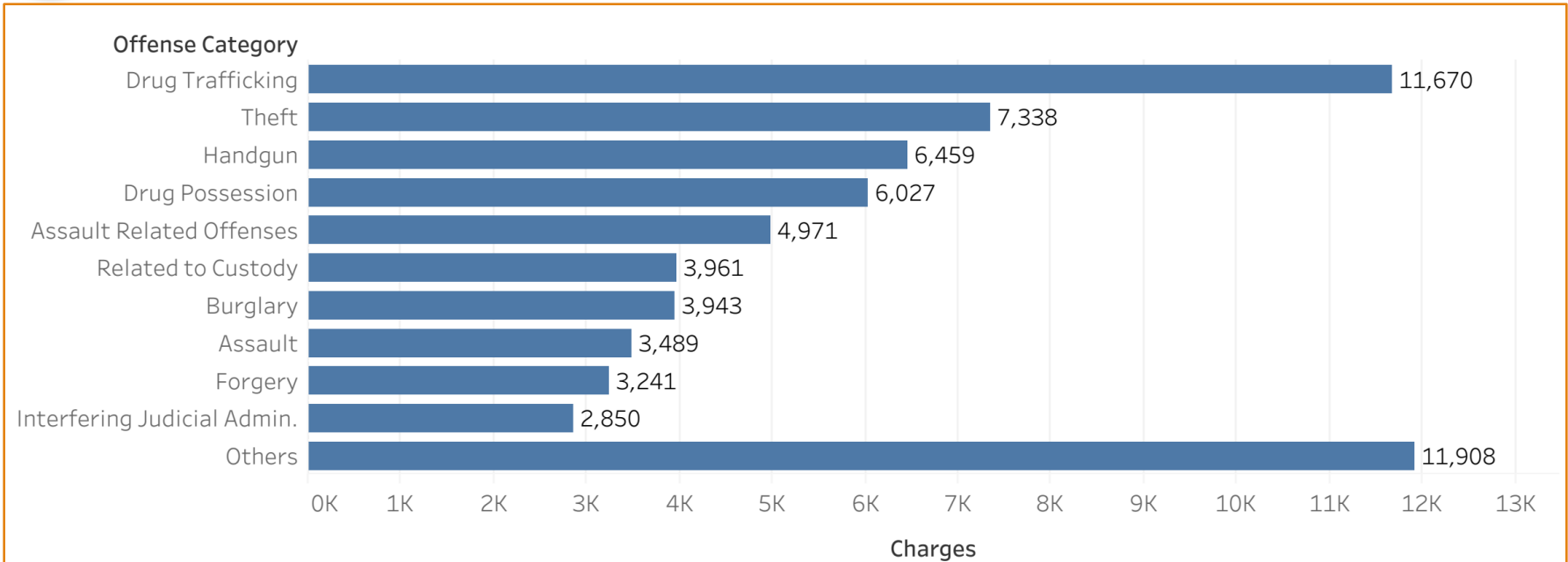
Cases with Pretrial Custody Ending April 15th to June 30th Calendar Year 2019 & 2020 Statewide
Excluding Cases with Release Upon Disposition

The purpose of this report is to show the impact of the COVID19 pandemic on pretrial release and the rate at which defendants remain in the community with no new arrests. Because court dockets were limited to essential hearings from mid-March to June 1st, defendants have been in the community for a longer pretrial release period than in previous years. This report shows that those released in April are more likely to have a new arrest by July 1st than those released in May or June. Re-arrest rates are typically calculated from the date of pretrial release to the disposition date of the case with typical statewide rates being 10-13%. Therefore, data will not be available for recent arrests until those cases reach disposition. Re-arrest rates will likely be lower as case processing increases.





KENTUCKY COURT OF JUSTICE



Offense Category	Charges	Cases	Defendants *
Drug Trafficking	11,670	7,428	6,020
Theft	7,338	5,599	4,571
Handgun	6,459	5,197	4,655
Drug Possession	6,027	4,862	4,392
Assault Related Offenses	4,971	2,443	2,290
Related to Custody	3,961	3,599	3,040
Burglary	3,943	2,814	2,470
Assault	3,489	2,558	2,379
Forgery	3,241	1,054	911
Interfering Judicial Admin.	2,850	2,723	2,568
Others	11,908	7,209	6,364
Grand Total	65,857	28,930	20,007

Felony Charges in Circuit Criminal Cases Filed CY 2017-2021 Including at Least One Persistent Felony Offender Charge Top 10 AOC Offense Categories

Statistical Analysis Considerations

* Data provided from the CourtNet database.

* Count of Defendants is the number of distinct Criminal History Keys among the reported cases. This count excludes 130 reported cases missing Criminal History Key.

* Count of charges excludes charges of the Persistent Felony Offender UOR codes.

* All cases are included that have at least one charge of a Persistent Felony Offender UOR code. These cases do not necessarily have the penalty enhancement granted.



KENTUCKY COURT OF JUSTICE



ADMINISTRATIVE OFFICE OF THE COURTS Research and Statistics

20_PINS8009

Rearrest Prior to July 1st

Cases with Pretrial Custody Ending April 15th to June 30th Calendar Year 2019 & 2020 Statewide
Excluding Cases with Release Upon Disposition

			Rearrest Prior to 7/1	Total Cases
2019	April	Pretrial Release	422 Cases 7.1%	5,943 Cases
		Administrative Release	71 Cases 7.2%	988 Cases
		Total	503 Cases 7.2%	7,027 Cases
	May	Pretrial Release	603 Cases 5.3%	11,389 Cases
		Administrative Release	156 Cases 7.3%	2,128 Cases
		Total	776 Cases 5.6%	13,742 Cases
	June	Pretrial Release	279 Cases 2.7%	10,331 Cases
		Administrative Release	57 Cases 2.7%	2,123 Cases
		Total	346 Cases 2.7%	12,635 Cases
2020	April	Pretrial Release	293 Cases 10.0%	2,930 Cases
		Administrative Release	171 Cases 11.5%	1,490 Cases
		Total	469 Cases 10.3%	4,537 Cases
	May	Pretrial Release	383 Cases 8.0%	4,789 Cases
		Administrative Release	330 Cases 7.1%	4,628 Cases
		Total	716 Cases 7.5%	9,532 Cases
	June	Pretrial Release	183 Cases 3.2%	5,783 Cases
		Administrative Release	177 Cases 4.2%	4,205 Cases
		Total	363 Cases 3.6%	10,140 Cases
2019		Pretrial Release	1,304 Cases 4.7%	27,663 Cases
		Administrative Release	284 Cases 5.4%	5,239 Cases
		Total	1,625 Cases 4.9%	33,404 Cases
2020		Pretrial Release	859 Cases 6.4%	13,502 Cases
		Administrative Release	678 Cases 6.6%	10,323 Cases
		Total	1,548 Cases 6.4%	24,209 Cases

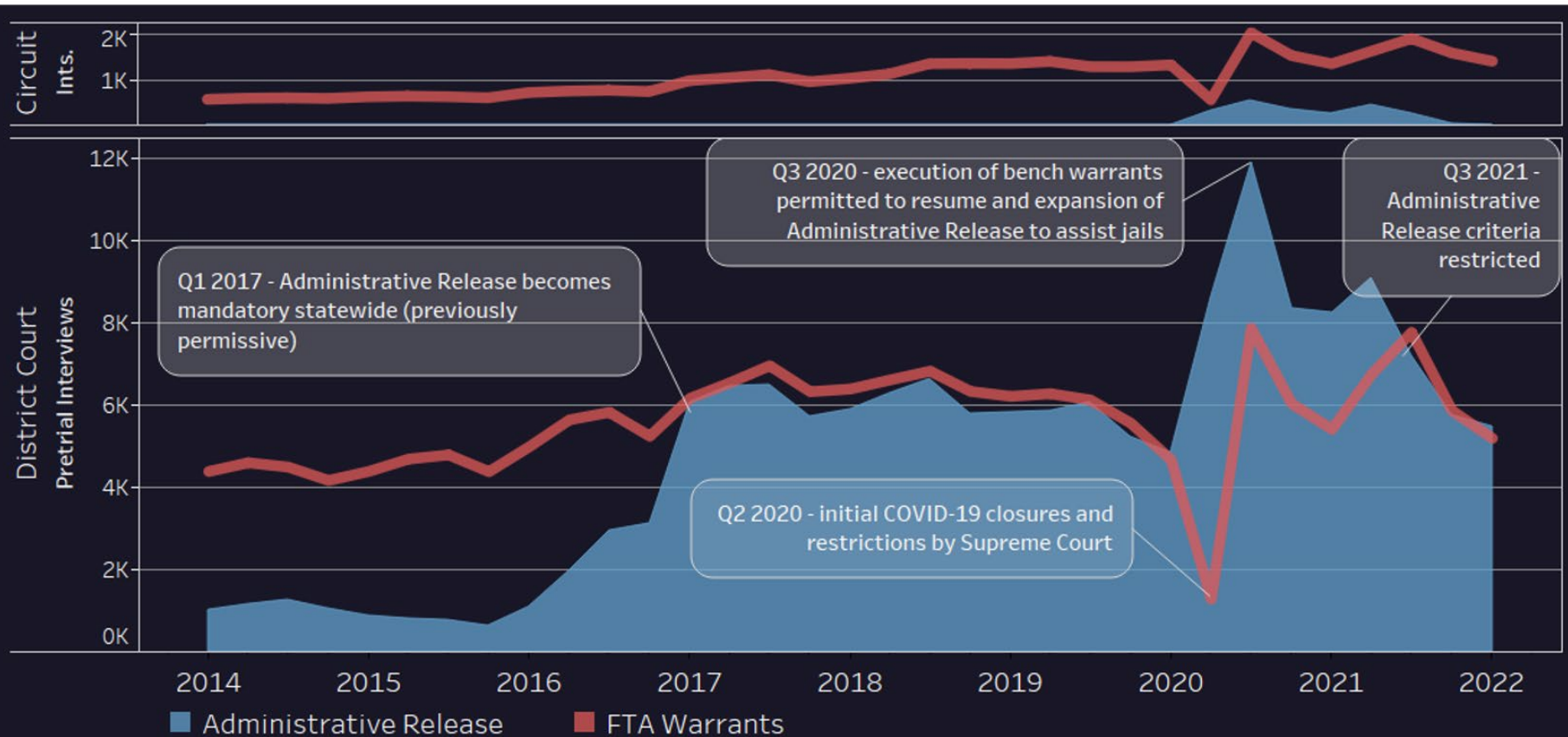


KENTUCKY COURT OF JUSTICE

Comparison of Administrative Release and Failure to Appear Warrants

AR: Pretrial Interviews with Release Outcome *Administrative Release* and Custody Ending 1/1/2014 – 3/31/2022

FTA Warrants: Pretrial Interviews (all Release Outcomes) with FTA Outcome *Warrant Info* and FTA Date 1/1/2014 – 3/31/2022

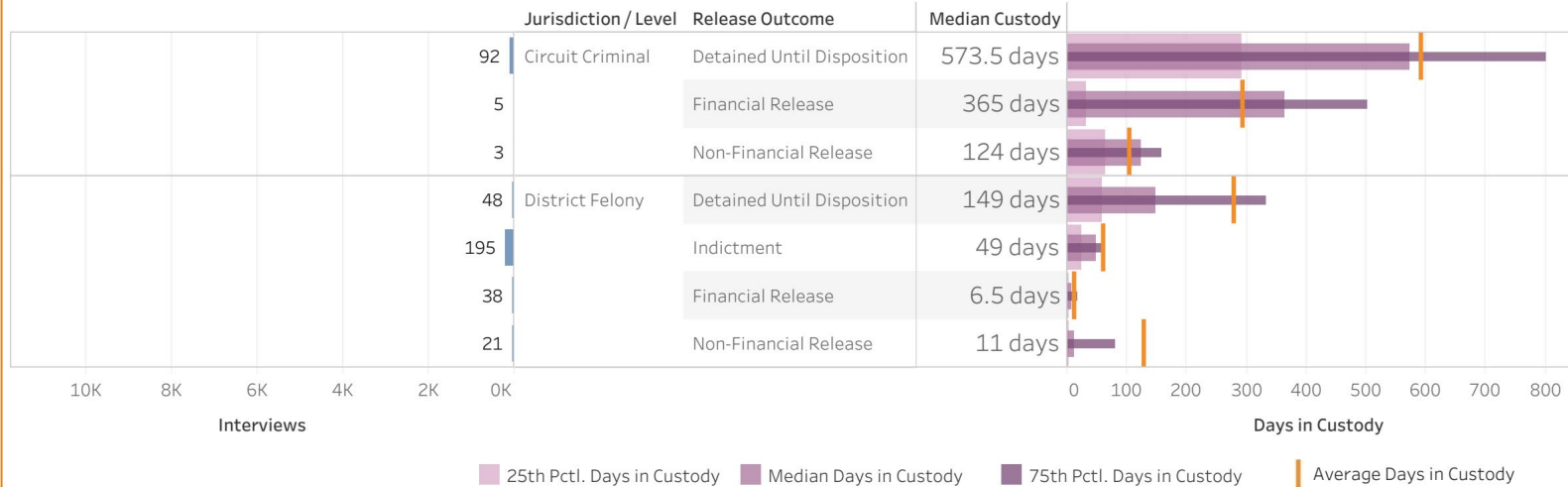




KENTUCKY COURT OF JUSTICE

Pretrial Interviews with Pretrial Custody Ending FY 2019 Interviews with District Felony or Circuit Criminal Cases with Class A Felony as Highest Penalty Charge Convicted or Indicted in CourtNet

Class A Felony Indictments/Convictions

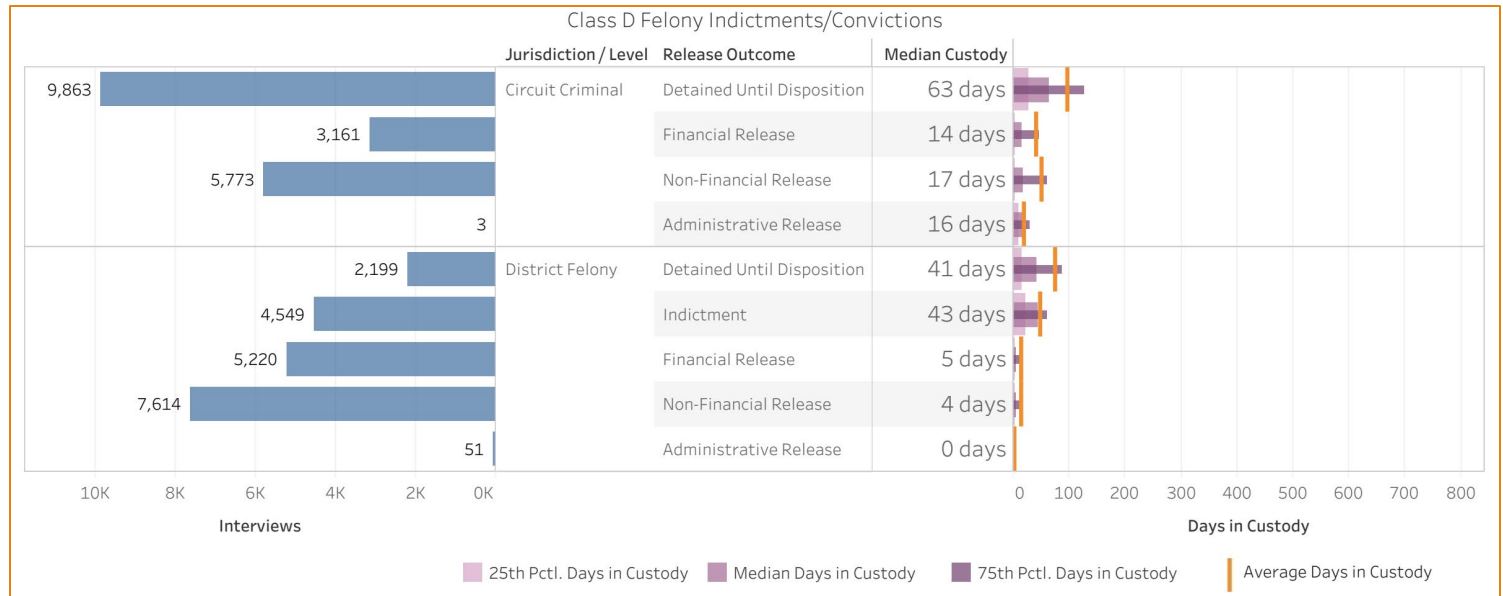


Jurisdiction / Level		Detained Until Disposition	Indictment	60-Day Rule	Financial Release	Non-Financial Release	Indictment Summons	Grand Total
Circuit Criminal	Interviews	92			5	3	2	102
	Cases	109			5	3	2	119
	25th Pctl. Days in Custody	291			32	63		270
	Median Days in Custody	574			365	124		512
	75th Pctl. Days in Custody	802			503	157		766
	Avg. Days in Custody	593			294	105		563
	Std. dev. of Days in Custody	361			261	95		366
	Days in Custody	54,511			1,471	316		56,298
District Felony	Interviews	48	195	5	38	21		307
	Cases	60	226	5	41	27		359
	25th Pctl. Days in Custody	59	25	71	2	3		13
	Median Days in Custody	149	49	73	7	11		48
	75th Pctl. Days in Custody	334	64	77	17	81		70
	Avg. Days in Custody	278	60	76	11	130		93
	Std. dev. of Days in Custody	337	77	8	12	321		187
	Days in Custody	13,347	11,610	381	417	2,720		28,475



KENTUCKY COURT OF JUSTICE

Pretrial Interviews with Pretrial Custody Ending FY 2019 Interviews with District Felony or Circuit Criminal Cases with Class D Felony as Highest Penalty Charge Convicted or Indicted in CourtNet



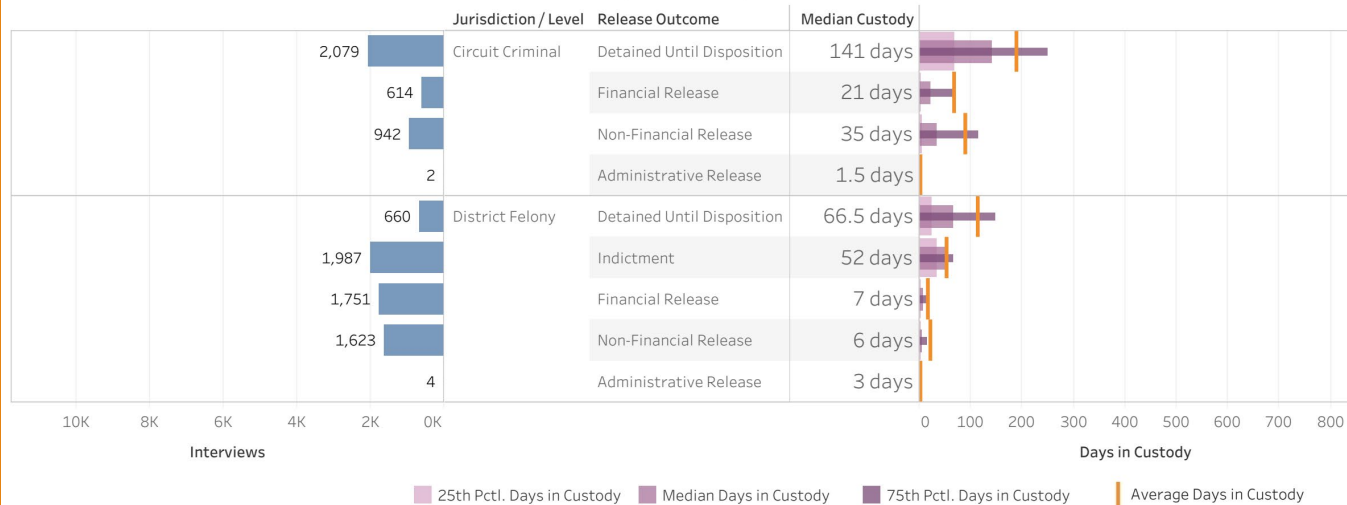
Jurisdiction / Level		Detained Until Disposition	Indictment	60-Day Rule	Financial Release	Non-Financial Release	Administrative Release	Indictment Summons	Transfer	Escape/Error	Grand Total
Circuit Criminal	Interviews	9,863			3,161	5,773	3	2,802	20	84	21,706
	Cases	12,847			3,580	6,755	3	2,859	24	106	26,174
	25th Pctl. Days in Custody	27			2	3	9		8	9	10
	Median Days in Custody	63			14	17	16		36	37	38
	75th Pctl. Days in Custody	127			45	60	30		57	114	96
	Avg. Days in Custody	97			42	50	20		38	85	74
	Std. dev. of Days in Custody	117			78	89	22		31	112	106
	Days in Custody	960,710			133,443	288,040	61		755	7,155	1,390,164
District Felony	Interviews	2,199	4,549	272	5,220	7,614	51		22	89	20,016
	Cases	2,476	5,131	297	5,516	8,025	53		26	103	21,627
	25th Pctl. Days in Custody	14	21	67	1	1	0		17	22	2
	Median Days in Custody	41	43	73	5	4	0		74	69	11
	75th Pctl. Days in Custody	88	61	81	13	11	1		195	170	39
	Avg. Days in Custody	74	48	85	15	15	4		192	134	31
	Std. dev. of Days in Custody	106	47	75	40	52	9		260	195	64
	Days in Custody	163,137	216,655	23,197	79,313	114,690	181		4,229	11,883	613,285



KENTUCKY COURT OF JUSTICE

Pretrial Interviews with Pretrial Custody Ending FY 2019 Interviews with District Felony or Circuit Criminal Cases with Class C Felony as Highest Penalty Charge Convicted or Indicted in CourtNet

Class C Felony Indictments/Convictions



Jurisdiction / Level		Detained Until Disposition	Indictment	60-Day Rule	Financial Release	Non-Financial Release	Administrative Release	Indictment Summons	Transfer	Escape/Error	Grand Total
Circuit Criminal	Interviews	2,079			614	942	2	293	7	30	3,967
	Cases	3,162			746	1,231	2	302	11	39	5,493
	25th Pctl. Days in Custody	69			2	4	1		52	22	21
	Median Days in Custody	141			21	35	2		60	70	90
	75th Pctl. Days in Custody	250			71	115	2		132	115	196
	Avg. Days in Custody	189			68	89	2		109	100	142
	Std. dev. of Days in Custody	180			138	165	1		110	129	177
	Days in Custody	393,092			41,466	84,237	3		761	2,997	522,556
	Interviews	660	1,987	143	1,751	1,623	4		7	25	6,200
	Cases	861	2,455	165	1,924	1,805	5		7	34	7,256
District Felony	25th Pctl. Days in Custody	24	34	70	2	1	1		42	18	5
	Median Days in Custody	67	52	73	7	6	3		89	40	19
	75th Pctl. Days in Custody	148	65	81	15	14	6		383	118	58
	Avg. Days in Custody	115	54	82	17	22	4		249	87	43
	Std. dev. of Days in Custody	153	39	34	47	54	3		279	123	74
	Days in Custody	75,595	107,482	11,707	30,457	35,223	14		1,740	2,169	264,387



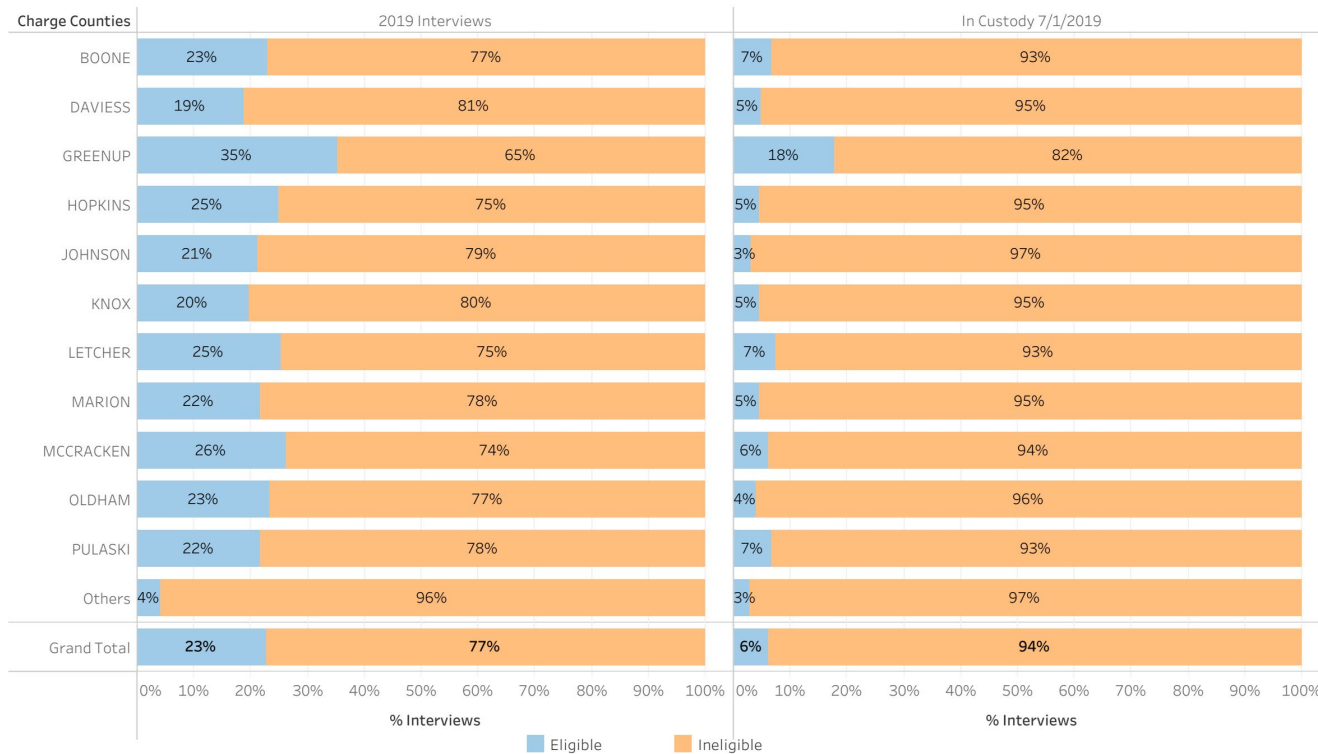
KENTUCKY COURT OF JUSTICE



ADMINISTRATIVE OFFICE OF THE COURTS Research and Statistics

22_PINS8007

Pretrial Interviews with Cases Filed in Specified Counties Eligible: Low FTA Risk, Low NCA Risk, No Current Charges of Ineligible Offenses, No Prior Convictions of Ineligible Offenses



Statistical Analysis Considerations

* Data provided from the Pretrial Information Management System.

* A single defendant may have one or more Pretrial Interviews in a given period of time, and a single Pretrial Interview may relate to one or more cases from one or more counties.

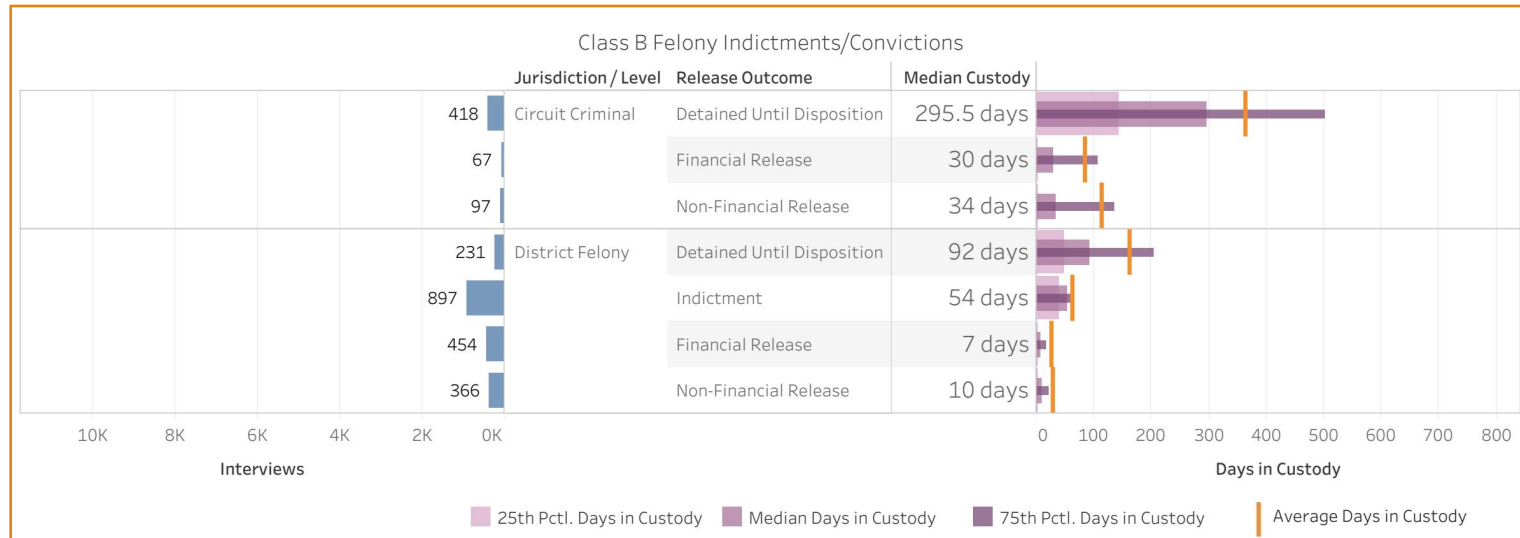
Charge Counties Others refers to those interviews that include at least one case from a county other than those specified.

Run Date:
3/1/2022
Page 1 of 2



KENTUCKY COURT OF JUSTICE

Pretrial Interviews with Pretrial Custody Ending FY 2019 Interviews with District Felony or Circuit Criminal Cases with Class B Felony as Highest Penalty Charge Convicted or Indicted in CourtNet



Jurisdiction / Level		Detained Until Disposition	Indictment	60-Day Rule	Financial Release	Non-Financial Release	Indictment Summons	Transfer	Escape/Error	Grand Total
Circuit Criminal	Interviews	418			67	97	24	2	4	612
	Cases	643			89	128	24	2	7	893
	25th Pctl. Days in Custody	144			1	3		47	24	65
	Median Days in Custody	296			30	34		95	128	214
	75th Pctl. Days in Custody	502			108	135		142	235	421
	Avg. Days in Custody	364			86	114		95	131	289
	Std. dev. of Days in Custody	305			136	176		134	131	296
	Days in Custody	152,360			5,752	11,095		189	525	169,921
	Interviews	231	897	50	454	366			5	2,003
	Cases	322	1,113	67	508	430			12	2,452
District Felony	25th Pctl. Days in Custody	49	38	70	2	2			92	9
	Median Days in Custody	92	54	75	7	10			265	41
	75th Pctl. Days in Custody	205	66	82	17	22			447	66
	Avg. Days in Custody	162	62	100	28	30			316	62
	Std. dev. of Days in Custody	187	67	90	79	60			283	101
	Days in Custody	37,523	55,878	4,988	12,537	10,905			1,580	123,411



KENTUCKY COURT OF JUSTICE

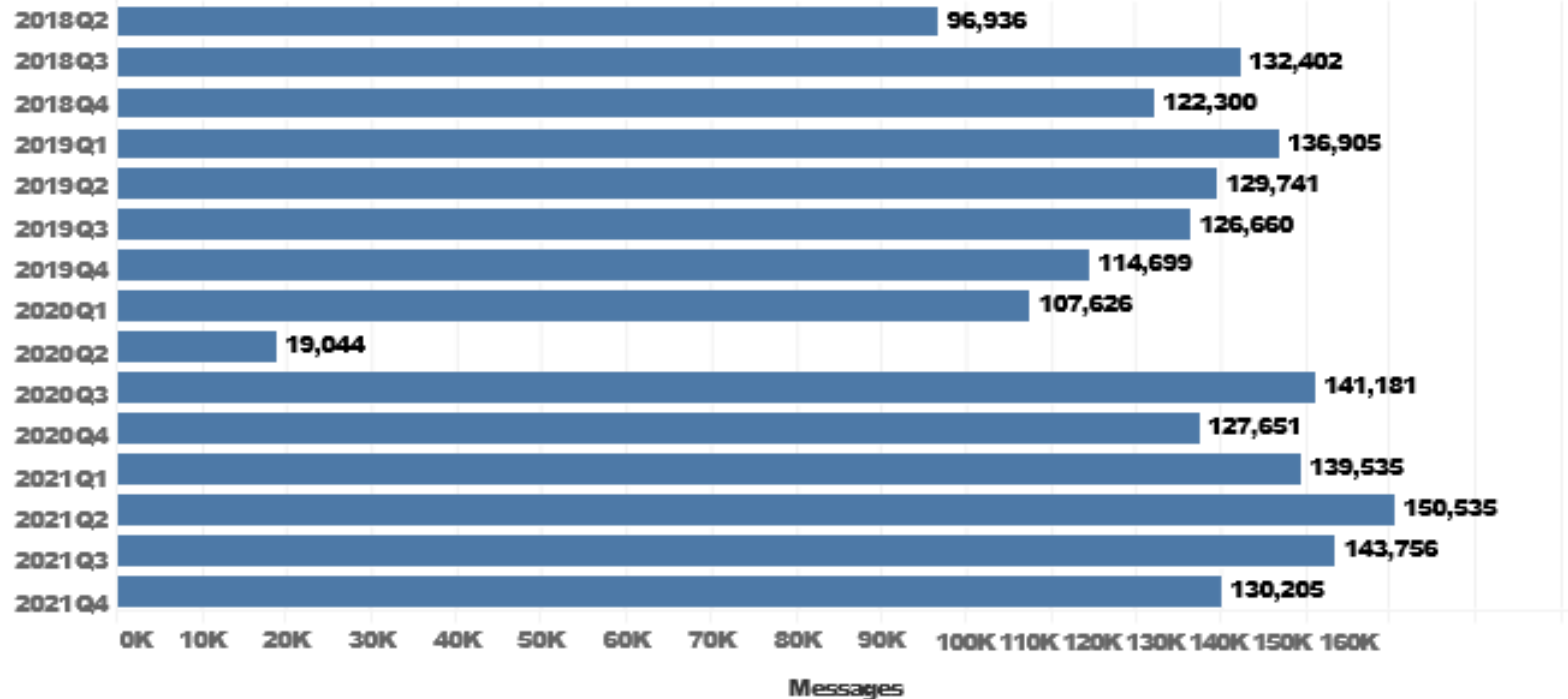


ADMINISTRATIVE OFFICE OF THE COURTS Research and Statistics

22_PINS8008

Pretrial Services Text Notifications Inserted for Transmission 4/16/2018 - 12/31/2021

Quarter of Date
Inserted

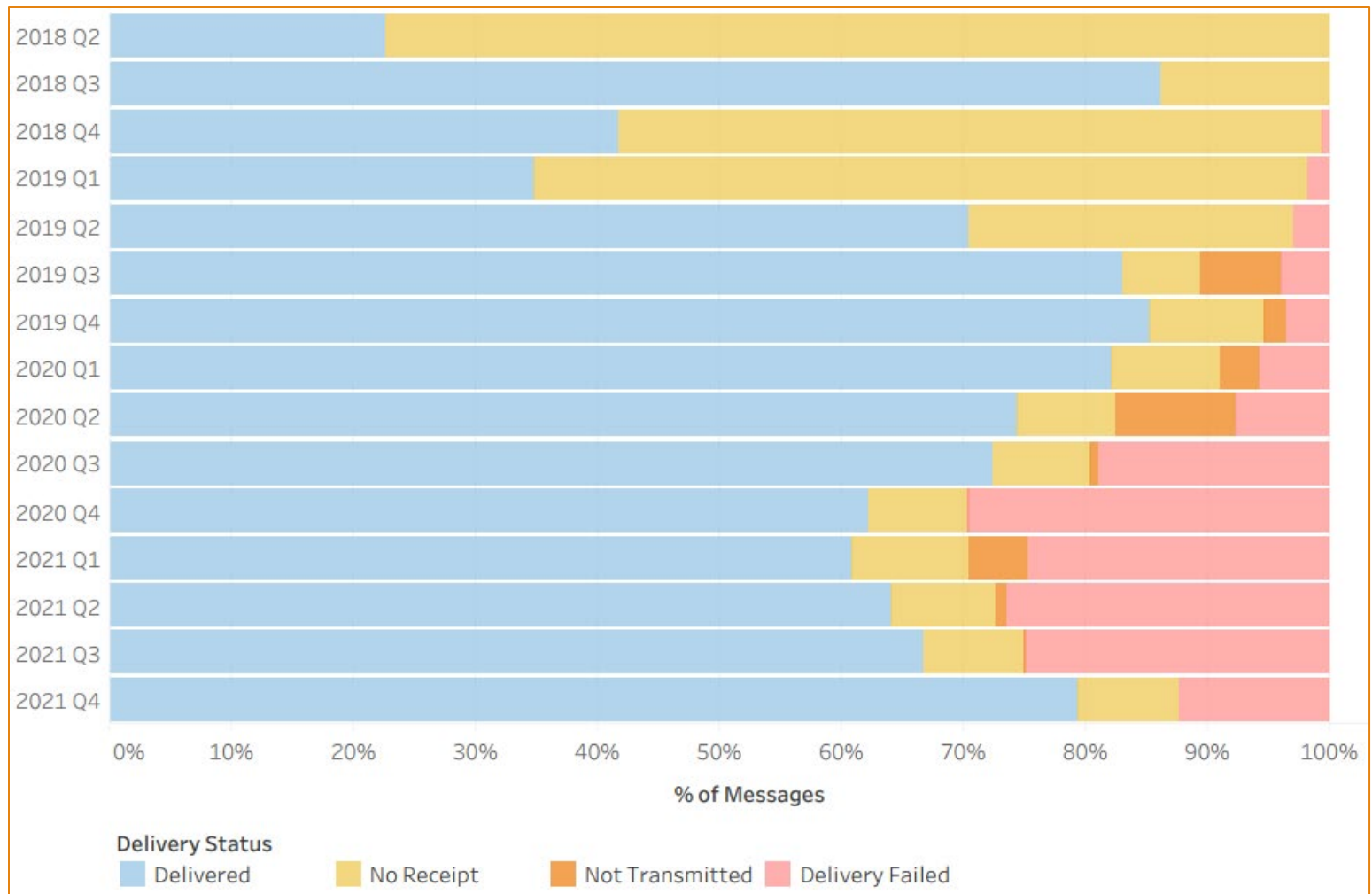




KENTUCKY COURT OF JUSTICE

ADMINISTRATIVE OFFICE OF THE COURTS Research and Statistics

Pretrial Services Text Notifications Inserted for Transmission 4/16/2018 - 12/31/2021





KENTUCKY COURT OF JUSTICE

ADMINISTRATIVE OFFICE OF THE COURTS Research and Statistics

Pretrial Interviews Including Cases Filed in Specified Counties
Eligible: Low FTA Risk, Low NCA Risk, No Current Charges of Ineligible Offenses,
No Prior Convictions of Ineligible Offenses

Charge Counties		2019 Interviews			In Custody 7/1/2019		
		Eligible	Ineligible	Total	Eligible	Ineligible	Total
BOONE	Court Cases	1,314	4,377	5,595	36	521	557
	Interviews	1,196	4,006	5,202	27	378	405
	Defendants	1,130	2,990	3,999	27	376	403
DAVIESS	Court Cases	946	5,329	6,218	21	853	873
	Interviews	827	3,558	4,385	20	402	422
	Defendants	780	2,394	3,087	20	389	408
GREENUP	Court Cases	367	716	1,073	32	115	147
	Interviews	314	574	888	18	83	101
	Defendants	299	512	797	18	83	101
HOPKINS	Court Cases	598	2,030	2,601	10	203	213
	Interviews	536	1,609	2,145	7	147	154
	Defendants	500	1,164	1,603	7	144	150
JOHNSON	Court Cases	247	972	1,198	3	137	140
	Interviews	246	918	1,164	3	95	98
	Defendants	221	592	776	3	89	92

KNOX	Court Cases	431	1,960	2,368	10	285	295
	Interviews	403	1,651	2,054	9	185	194
	Defendants	368	1,246	1,560	9	182	191
LETCHER	Court Cases	368	1,248	1,605	11	370	381
	Interviews	272	798	1,070	9	114	123
	Defendants	248	579	788	9	111	120
MARION	Court Cases	216	876	1,080	3	87	90
	Interviews	205	739	944	3	63	66
	Defendants	185	517	681	3	60	63
MCCRACKEN	Court Cases	945	3,141	4,052	26	551	577
	Interviews	740	2,087	2,827	23	351	374
	Defendants	705	1,625	2,261	23	342	364
OLDHAM	Court Cases	279	963	1,230	3	96	99
	Interviews	258	846	1,104	3	75	78
	Defendants	256	660	900	3	74	77
PULASKI	Court Cases	768	3,078	3,807	16	358	374
	Interviews	724	2,607	3,331	16	223	239
	Defendants	677	1,882	2,491	16	221	236
Others	Court Cases	160	4,487	4,641	32	1,426	1,458
	Interviews	115	2,679	2,794	20	684	704
	Defendants	114	2,454	2,561	20	677	697
Grand Total	Court Cases	6,639	29,177	35,468	203	5,002	5,204
	Interviews	5,719	19,336	25,055	142	2,174	2,316
	Defendants	5,365	14,071	18,842	142	2,125	2,263

Statistical Analysis Considerations

* Data provided from the Pretrial Information Management System.

* A single defendant may have one or more Pretrial Interviews in a given period of time, and a single Pretrial Interview may relate to one or more cases from one or more counties.

Charge Counties Others refers to those interviews that include at least one case from a county other than those specified.

Run Date:

3/1/2022

Page 2 of 2



Questions ??

